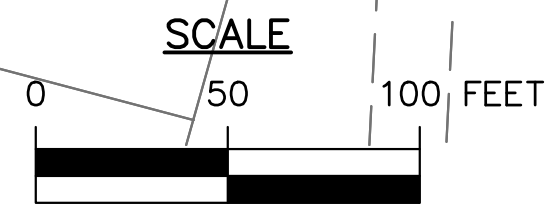
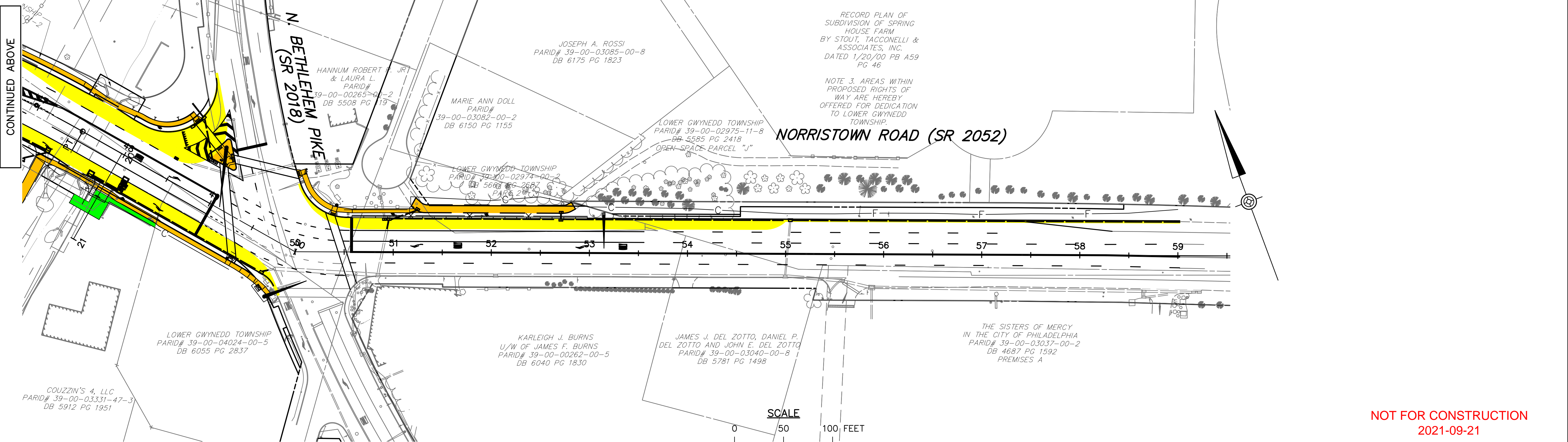
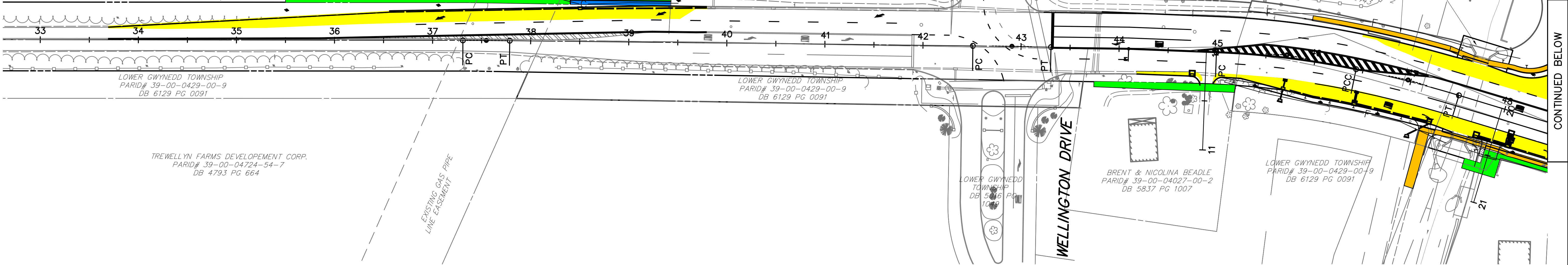


**LEGEND**

- PROPOSED TEMPORARY CONSTRUCTION EASEMENT
- PROPOSED CEMENT CONCRETE SIDEWALK/ASPHALT TRAIL
- REQUIRED RIGHT-OF-WAY
- PROPOSED FULL DEPTH PAVEMENT WIDENING
- F — LIMIT OF FILL/BORROW
- C — LIMIT OF CUT/EXCAVATION

DISTRICT	COUNTY	ROUTE	SECTION	SHEET
6-0	MONTGOMERY	-	-	1 OF 1
LOWER GWYNEDD TOWNSHIP				
REVISION NUMBER	REVISIONS	DATE	BY	

**SUMNEYTOWN PIKE (COUNTY)**



NOT FOR CONSTRUCTION  
2021-09-21