

# Lower Gwynedd Report



## MESSAGE FROM THE BOARD OF SUPERVISORS



Mr. Paccione served on the Park and Recreation Board for two years; the Zoning Hearing Board for two years; and is currently serving his fifth year as Supervisor. He and his wife, Lucy, and their three boys have lived in Lower Gwynedd Township for the past 10 years.

On Tuesday, January 16th the Board of Supervisors approved an Amended Settlement Agreement with Stoltz Management group. This will allow for the improvements at the Spring House Village Shopping Center that will include the relocation of Whole Foods from Montgomeryville, a CVS and Arpeggio and Starbucks. The staff and the Board of Supervisors worked intensely with the developer over the last six months of 2014 to make this happen. The process now goes to land-development and outside agency approvals. Look for a late 2016 opening.

On the fiscal front, and thanks to the collective efforts of the Supervisors, staff and various department heads, who have held the line on expenses, we have a balanced budget and yet another year without a tax increase.

This past Veterans' Day, a group of Lower Gwynedd Township volunteers organized the first Annual Veterans' Day Ceremony honoring all of our Veterans. The event was well attended and plans are under way for the second Annual Veteran's Day Ceremony scheduled for November 7, 2015.

Events like this could not be possible without the many residents who generously volunteer their time. Thank you to all of our Volunteers.

The Board of Supervisors encourages your comments and suggestions via email at [supervisors@lowergwynedd.org](mailto:supervisors@lowergwynedd.org).

**Stephen Paccione**, Chairman, Board of Supervisors

## INDEX

Countrie Picnic Being Rebranded.....	3
Lower Gwynedd Business Association .....	3
Township Directory .....	4
Citizen of the Year.....	4
School Resource Officer .....	5
Wissahickon Fire Co .....	6
2015 Yard Waste & Recycling Events .....	6
Spring Yard Care Tips.....	7
Gwynedd Mercy University..	8
Welcome to Bird Town.....	8
LG Business Association Map and Directory.....	9-12
Parks and Recreation .....	13-16
Summer Concert Series.....	16

## LIEUTENANT BRUCE HAMES RETIRES



Please join us in congratulating Lieutenant Bruce Hames on reaching the end of his long and decorated career with Lower Gwynedd. Bruce began his career as a police officer in Ambler in 1977 before joining the force in Lower Gwynedd in 1985. He has worked his way up through the ranks and held many positions within the department in his thirty plus years before landing at his current rank. The department wishes Bruce and Cindy a very happy retirement!!!

**1130 N. Bethlehem Pike**  
**P.O. Box 625**  
**Spring House, PA 19477**  
**Phone: 215-646-5302**  
**Fax: 215-646-3357**  
**[www.lowergwynedd.org](http://www.lowergwynedd.org)**



Historical Landmark est 1719 • Celebrating 65 Years in Business

**Home of the Famous Crabcakes!**



**The Bistro!!**  
Happy Hour M-F 4pm - 6pm

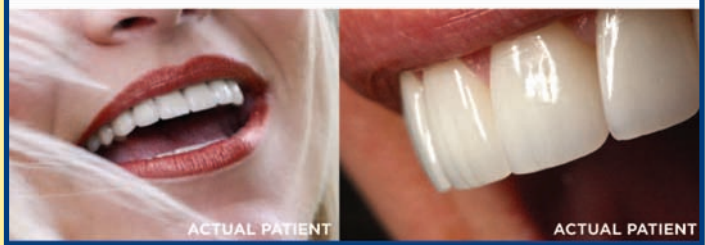


Join us on ...  
**The Terrace**

Happy Hour M-F 4pm-6pm  
Discount Appetizers  
Discount Beverages • 16 Draft  
Beer System • Crafted Beers

215-646-1788 1032 • Bethlehem Pk • Spring House, PA  
springhousetavern.com

REAL PATIENTS. REAL SMILES.



**STELZER DENTAL**  
AESTHETIC AND GENERAL DENTISTRY

COMPREHENSIVE COSMETIC FUNCTIONAL AESTHETIC

(215) 646-5777



VENEERS SMILE DESIGN WHITENING CROWNS BONDING IMPLANTS INVISALIGN

www.STELZERDENTAL.com

1108 N. Bethlehem Pike, Suite 2, Lower Gwynedd, PA 19002

## GT AUTOMOTIVE CENTER

161 South Main St, Ambler • www.amblerbestgtauto.com

Located Conveniently to Railroad Station

**215-628-3729**

- Complete Car Care • All Makes & Models • Domestic & Imports
- Oil Change Service • Brakes • Tires • Electrical
- Check Engine Light Diagnosis & Repair

Manufacturer's Recommended Mileage Services Performed 

**FREE SHUTTLE SERVICE AVAILABLE within the Ambler area**  
**CAR RENTAL SERVICE ALSO AVAILABLE**

## A Special Thank You To The Businesses!

This publication is made possible at no cost to the residents of Lower Gwynedd Township through the generous advertising sponsorship of the businesses listed throughout our newsletter. We wish to encourage your patronage of these establishments. They are a very important to the economic vitality of our community.

- Pharmacy staff dedicated to your health and wellness
- We accept most medicare Part D Plans
- Courteous service by people who know your name



**215-646-1691**



1121 N. Bethlehem Pike  
Spring House, PA 19477

www.villagepharmacyatspringhouse.com 

*Family Owned and Operated Since 1992*

## Shaeff-Myers Funeral Home

215-646-0595



**Family Owned and Operated**  
**Traditional and Cremation Services**

Richard E Myers, FD ~ Robert E Myers, Supervisor  
145 Tennis Ave ❖ Ambler, PA 19002  
Shaeff-Myers.com

Our annual Countrie Picnic is taking a vacation in 2015 and will come back in September 2016 with a **NEW NAME**, a **NEW LOCATION**, **MORE ACTIVITIES**, **MORE FUN**, and a renewed commitment to showcase how special **LOWER GWYNEDD TOWNSHIP REALLY IS!**



Want to suggest a **NEW NAME** or **FUN IDEAS** for the event?

Wish you could volunteer for a subcommittee?

Please email [sfeight@lowergwynedd.org](mailto:sfeight@lowergwynedd.org) with your suggestions.

## Countrie Picnic Being Rebranded



## LOWER GWYNEDD BUSINESS ASSOCIATION

2015 promises to be another exciting year for the Lower Gwynedd Business Association. The organization started the year on a philanthropic note, hosting a successful food drive for the Mattie Dixon Community Cubbard in Ambler, PA. Special thanks to the following member businesses for participating as collection points for the food drive: Ambler Savings, Berkshire Hathaway Home Services Fox and Roach, Canine Country, Gwynedd Dental Association, Harth Builders, Leo Mortgage, Sierchio and Towsey Certified Public Accountants, Spring House Property and Management Association, Spring House Tavern, Spring House Travel, Valleygreen Flowers and Gifts, Village Pharmacy, and the YMCA.

Mattie Dixon is still in need of contributions. Donations of food items, toiletries, soap, paper goods, detergent, clothing, bedding, as well as financial contributions, are always welcome and can be dropped off at their location on Main Street in Ambler on Tuesdays, Thursdays and Fridays from 9 a.m. until 2 p.m., and from 12 to 2 p.m. on Wednesdays.

Many more events are planned for the remainder of the year. Be sure to save the following dates on your calendar:

- April 22nd—LGBA Business Social at Spring House Tavern from 5-7 p.m. Larry Comunale will briefly speak and be available for questions and discussions during the evening
- May 14th—LGBA Lunch and Learn at Andy's Diner from 11:30 a.m. -1 p.m. Kristin Kane of Kane Partners LLC will discuss Social Media best practices for small businesses

*Like the LGBA Facebook page to receive regular updates on these events and others in your news feed.*

The LGBA recently updated its membership directory and map—a copy of which you will find within this newsletter. As you plan



purchases of goods and services, we encourage you to use this directory and shop local businesses first. Bergey's Ford, Inc. is sponsoring this year's map in celebration of their 15 year anniversary of being in Lower Gwynedd Township and the current construction of their new facility on N. Bethlehem Pike. Their team of 35 employees expects to move into the new space this summer.

"This is an exciting time of new beginnings for us. We have made the commitment to invest in both our Ford dealership and Lower Gwynedd Township, replacing very aged buildings with a new modern facility designed to better serve our customers, employees, and the community," explained Luke Bergey, President of Bergey's Ford, Inc. Both sides of the street will be refreshed and improved, enhancing their appearance for the many travelers that pass by it each day.

The new layout will make navigating the dealership easier indoors, as well as outside on their lot. All services will be conveniently located in one building, rather than two separate buildings. Added amenities will include customer lounges, a children's play area, and a service drive-in lane. The Ford Quick Lane will offer routine mechanical services for vehicles of all makes and models while customers wait, no appointment needed.

"We look forward to providing the best car buying and service experience possible," said Bergey, whose great-grandfather started the family business 90 years ago, "while maintaining our traditional no pressure, treat each customer like we want to be treated way of doing business."

The LGBA is grateful for the generous support of Bergey's Ford and looks forward to hosting an open house at their renovated facility in the fall.



# LOWER GWYNEDD TOWNSHIP

1130 N. Bethlehem Pike • P. O. Box 625 • Spring House, PA 19477

www.lowergwynedd.org

**Administration:** Phone: (215) 646-5302 Fax: (215) 646-3357 **Police:** Emergency: 911 Phone: (215) 646-5303

## Board of Supervisors

Stephen J. Paccione, Chairman  
Kathleen Hunsicker, Vice Chair  
Edward J. Brandt  
Dr. J. Richard Booth  
Mark G. Grey

**Township Manager:** Larry M. Comunale

**Assistant Manager:** Craig McAnally

**Asst. Sec.:** Carole Culbreth

**Finance Director:** Karen Yeutter

**Police Chief:** Paul Kenny

**Solicitor:** James J. Garrity, Esq.

**Engineer:** David W. Connell, P.E., CKS Eng.

**Public Works Director:** Michael DeStefano

**Zoning Officer:** Joseph A. Zadlo

**Asst. Zoning Officer:** Craig McAnally

**Building Inspector:** Joseph Groarke

**Real Estate Tax Collector:** Betty Lou Yost

**E.I.T.; B.P.; Merc. & LST Collection:**  
Berkheimer Associates

**Recreation Director:** Sandi L. Feight

**Parks Superintendent:** Chris Kalb

**Fire Marshal:** Al Comly

## LOWER GWYNEDD TOWNSHIP 2015 SPRING/SUMMER MEETING SCHEDULE

All meetings to be held in the Administrative Office at  
1130 North Bethlehem Pike, Spring House

	BOARD OF SUPERVISORS (7:30 PM)	ZONING HEARING BOARD (7:30 PM)	PLANNING COMMISSION (7:00 PM)	PARK AND RECREATION (6:00 PM)	GWYNEED GREEN	MUNICIPAL AUTHORITY (7:30 PM)
<b>MARCH</b>	11 and 25	13	19	25	18	12
<b>APRIL</b>	8 and 22	10	16	22	15	9
<b>MAY</b>	27	8	21	27	20	14
<b>JUNE</b>	24	12	18	24	17	11
<b>JULY</b>	22	10	16	22	15	9
<b>AUGUST</b>	26	14	20	N/A	19	N/A

### Deadline for Submissions:

**Zoning Hearing Board**  
30 days prior to scheduled meeting

**Planning Commission**  
last day of month prior to scheduled meeting

### TOWNSHIP HOLIDAYS are as follows:

April 3 (Good Friday)  
May 25 (Memorial Day)  
July 3 (Independence Day Holiday)  
September 7 (Labor Day)  
October 12 (Columbus Day)

**Primary Election Day:**  
Tuesday, May 19, 2015

## CITIZEN OF THE YEAR - HANK STOEBENAU

Hank Stoebenau has been a resident of Lower Gwynedd Township since 1978. Hank received his B. A. in Chemistry from LaSalle University and his M. S. in Chemistry from Middlebury College, Middlebury, VT.

Hank was employed at Rohm & Haas Company, Philadelphia, Pennsylvania from 1968 to 2001. He worked various roles including: development chemist; technical sales representative; marketing and sales management positions; The Academy of Natural Sciences as a representative of Rohm & Haas; and Manager of International Trade Affairs.

In 2001, he became President of Efficient Global Trade, Inc. which provided clients with support services for import/export tariff management in the chemical industry and retired in 2011.

Hank has been a volunteer pilot for Angel Flight East since 2002 to present and is currently a member of their Board of Trustees. The mission of Angel Flight East is to provide free air transportation to qualified patients and their families by arranging flights to distant medical facilities, delivering supplies to disaster areas, and reuniting families during desperate times. The volunteer pilots use their private planes to fly the patients to their destinations. These pilots pay for all expenses for each flight request.

Hank has been a member of the Lower Gwynedd Municipal Authority since 2006. He also has been a member of the Board of Directors for both the Wood Bridge Meadow Homeowners Association and the Wings Field Preservation Association since 2012.

Hank is married to Barbara and they have two wonderful children, Kirsten and Christopher, and three grandchildren, Alexa, Ayli and Kieran.



L TO R: Larry Comunale, Township Manager; Barbara Stoebenau; Hank Stoebenau; Kathleen Hunsicker, Vice-Chair.

# SCHOOL RESOURCE OFFICER

Lower Gwynedd Police and the Wissahickon School District have teamed up to provide an additional resource available to students. The creation of a School Resource Officer (SRO) program has further opened the line of communication between the school community and the police department. The SRO is a visible police presence in the Wissahickon schools every day the students are present. The purpose of having the same visible, uniformed police officer, is to establish trust and build relationships. Once relationships are forged, information is more apt to be spread. Thus the goal of keeping our community safe is an easier one to achieve.

Officer Beth Sanborn, and other qualified candidates, expressed immediate interest in this position. The decision was difficult, but Officer Sanborn was selected and has already established herself as a positive resource with the students. Her days involve walking the hallways and conversing with students and staff. She meets regularly with the administrative staff, parents, and students. She has even gone so far as make herself available 24 hours a day, as needed, if a student is in crisis.

Officer Sanborn's role at the school is a positive one. This position is being welcomed with open arms and I believe Lower Gwynedd Township, Wissahickon School District, the community, and our residents will all benefit from this proactive, protective measure.



Top Row L to R: Chief Paul Kenny, Chairman, Stephen Paccione.  
Bottom Row L to R: Lyn Fields, Wissahickon High School Principal, SRO Beth Sanborn, Wissahickon School District, Superintendent, Judy Clark.

## SEWER BILLING - COMING IN JULY

There will be a new look to your sewer bill starting this July. Your invoice will now come in an envelope with a remittance portion at the bottom of the page instead of the post-card.



You can now drop off your sewer payment at the Township building in our new drop-off lockbox located in the vestibule. Otherwise, you can mail your payment, make your payment at the Spring House office of the Susquehanna Bank, or visit our website [www.lowergwynedd.org](http://www.lowergwynedd.org) and pay online with Muncipay.



Kathleen Hunsicker, Vice-Chair and Dr. Kathleen Owens, President, Gwynedd Mercy University at the University's Annual Christmas Reception and Concert.

## SIGN UP FOR NEWS AND ANNOUNCEMENTS ON THE WEBSITE



With the new design of the Township Website residents can register their email address to be notified when news items or announcements are posted on the website. On the home screen of the Township Website if you scroll to the bottom of the page you will see a News and Announcements section, click on Subscribe to register. Take the time today and register on the website and you can begin receiving announcements.



Follow us on Twitter @LowerGwyneddPA

## WISSAHICKON FIRE COMPANY



The Wissahickon Fire Company protects the 17,500 residents of Ambler Borough and Lower Gwynedd Township through two fire stations. In 2014, the fire company responded to 664 calls.

Ushering in 2015, Wissahickon Fire Company welcomed newly-elected Chief, Philip Koller, while offering their gratitude to outgoing Chief, John Leadbeater, for his seven years of service.

The company will soon be replacing their heavy rescue vehicle with a new E-One rescue truck to complement its operation of two engines, a rescue engine, two fire police units, an aerial and two marine units. In January, three members of the Wissahickon Fire Company, Rob Harris, Andy Bell and Al Comly (*pictured on left*), participated in an Ice Rescue Training in York County, further expanding available services.

Serving the community for 124 years, this organization is comprised of volunteers who are highly trained, dedicated and caring people. While many volunteers serve as firefighters, there are also special fire police and administrative personnel. For more information on volunteering, please call 215-646-1266 or visit [www.station7.org](http://www.station7.org).

The Wissahickon Fire Company wishes to extend their thanks to the residents of Ambler Borough and Lower Gwynedd for their continued donations and support.

## 2015 YARD WASTE COLLECTION DATES FOR WASTE MANAGEMENT CUSTOMERS

- April 4, 2015
- May 2, 2015

*All YARD Waste should be placed at the curbside by 6:00 AM on these days in biodegradable bags.*

### LOWER GWYNEDD TOWNSHIP TO HOST A FREE ELECTRONIC RECYCLING AND PAPER SHREDDING EVENT ON APRIL 11, 2015 FOR TOWNSHIP RESIDENTS FROM 8:00 A.M. TO NOON.

It's Spring! Time to de-clutter your home of obsolete and unwanted electronics and paper. Lower Gwynedd Township is proud to sponsor a recycling collection event on April 11, 2015 from 8 a.m. to 12:00 p.m. at the township building located at 1130 North Bethlehem Pike in Spring House, PA. Fill up your car and our trained staff will unload it while you stay in the comfort of your vehicle!

This special e-waste recycling collection event is intended for items that are typically purchased during the year like toys, computers, laptops, flat-screen televisions, cell phones, mobile devices, small household appliances, and much more. "Anything with a Plug™" will be accepted and recycled...except large appliances, smoke detectors, and rear-projection TVs.

All materials collected will be recycled in an environmentally friendly manner and for your security, ALL media data that are collected are destroyed. This FREE service is provided by Lower Gwynedd Township and all material collected will be processed by eForce Compliance, the first dual certified electronic recycler in the Delaware Valley. eForce provides a full staff of professional e-waste experts to handle and transport all material collected, and in the process creates sustainable green jobs.

For more information about eForce Compliance and the types of materials we accept and recycle, visit our web site at [www.eforcecompliance.com](http://www.eforcecompliance.com) or give us a call at 215.964.6665.

Any bills, invoices, bank statements, credit card statements, payroll stubs, tax records, insurance records, medical records or any other sensitive material can be brought to the Township facility to be shredded on site by Shred One Security Corp.



## LANDSCAPE MAINTENANCE

Lower Gwynedd Township asks that property owners maintain their roadside landscaping and trees. Roadside landscaping and trees that are not maintained and stick out into the roadway become a safety issue for the pedestrians and motorist using the Township Roadways. All roadside landscaping and trees must be trimmed back approximately 1 foot behind the face of the curb line or edge of pavement and to a minimum height of 13 feet. Corner property owners and owners that reside on the inside curvature of a roadway must take extra care to make sure their landscaping does not interfere with sight line distances. Properly maintained landscaping allows for safe passage of pedestrians and motorist that are using our roadways.



## ROAD PROGRAM

For the 2015 road program Lower Gwynedd Township is scheduled to complete roadwork on 4.15 miles of the 49 miles of roadway the Township is responsible to maintain. The roadwork will consist of asphalt base repair, asphalt wearing course and micro-surfacing. The following roadways are scheduled to be repaired and paved this upcoming summer.

Turnbury Lane (Between Meeting House Road & Tanglewood Drive)  
Laura Lane  
Lindsay Drive

Swedesford Road (Between Summeytown Pike & School House Lane)  
Pershing Road

Gwynedd Avenue (Between Gypsy Hill Road & the Dead End)  
Township Line Road (From Penllyn Pike into Penllyn Woods Park)

McKean Road  
Houston Road (Between Knight Road & Pen Ambler Road)  
Wharton Circle

School House Lane  
Brushtown Road  
Regency Circle  
Gladestry Lane

### Frequently asked questions:

**1) How do I get a recycle bin?**

☆ Please call Waste Management at 1-800-328-1717

**2) Can I drop off prescription drugs at the township?**

☆ April 11, 2015 the Township will be collecting prescription drugs.

**3) Does Lower Gwynedd Township have a leash law?**

☆ No, however, dogs must be under control of the owner at all times.

**4) What period does my sewer bill cover?**

☆ Metered properties are charged a sewer rental fee for the current quarter. Added to that are overages from the previous period if any.

**5) I would like to speak to a Lower Gwynedd police officer, but it's not an emergency? What phone number should I call?**

☆ Please call 215-646-5300 to be connected with county radio.

**6) Do I need a Use and Occupancy Permit to sell or purchase a home in Lower Gwynedd?**

☆ No permit is required, unless you are purchasing a new home or a new commercial structure.

**7) Do I need a permit to solicit in Lower Gwynedd Township?**

☆ Yes. You must have a state criminal background check, photo ID and will be fingerprinted. The fees are \$40.00/day per person or \$200.00/7days per person.

## SPRING YARD CARE TIPS



### TO IMPROVE YOUR YARD IN A GREEN WAY AND HELP PREVENT STORMWATER POLLUTION, PLANT A LARGE STATURE TREE

Large trees are great stormwater control. At maturity, they intercept over 1,000 gallons of rainwater each year. Their foliage and bark reduce runoff by intercepting rainfall, and their broad leaf canopies also reduce the force of rain hitting the soil, reducing erosion. Where possible, plant a large broad leaf tree such as an oak, maple, or black gum. Avoid pruning their crowns to allow full canopies to develop.

### CONSIDER PLANTING NATURAL, WARM SEASON GRASSES

Explore converting a corner of your property to native warm season grasses. Their extensive roots of 3 to 7 feet deep enrich the soil and absorb many times the amount of rainwater that turf grass does. It also helps to filter out harmful

nutrients which degrade our streams. Cut down stalks of existing ornamental and native warm season grasses that have been left over from the winter for bird habitat.

### GET YOUR SOIL TESTED BEFORE FERTILIZING

Healthy soil grows healthy turf which can absorb more rainwater.

Purchase a soil test kit from your local Penn State extension and submit soil samples from your lawn to determine the nutrients that may be lacking. Visit [www.aasl.psu.edu](http://www.aasl.psu.edu) for more information.

### LEAVE GRASS CLIPPINGS LAY FOR A FREE FERTILIZER ALTERNATIVE

- Cut grass at 2½ to 3 inches tall. Mow often enough so that clippings are not longer than one third (1/3) of the grass blade, so they can decompose easily into the soil.
- Excess nitrogen and phosphorus from lawn fertilization are frequent pollutants to streams, fostering the growth of algae which deplete oxygen levels, harming fish. Spare your stream by avoiding spring fertilization and leave your grass clippings on your lawn instead. Grass clippings supply between 25% and 50% of nitrogen and phosphorus needs.



Volcano mulching suffocates surface roots of trees.

### MULCH AROUND TREES PROPERLY

Mulched beds trap and infiltrate more rainwater than lawn or bare soil. Spread out any excess mulch away from trees and shrubs, making sure the tree's "flare" is exposed and allowing it to decompose. Top off with a thin layer of fresh mulch, making sure the mulch is no deeper than 3" and does not touch the tree bark. Never spread fresh woodchips around trees or shrubs as their decomposition may harm plants.



## GWYNEDD MERCY UNIVERSITY GETS BAT HOUSES



Lower Gwynedd resident and Eagle Scout Ryan Grey center left rear, pictured here with the Gwynedd Mercy University Science club; Stacey Lattini, Ph.D. Professor Biology department, and her family; Dick Target, Chairman Lower Gwynedd Parks and Rec and Ambler Rotary Club Executive and Mark Grey, Lower Gwynedd Township Supervisor, Scout leader and Gwynedd Green committee member. Taking the photo Lisa McGarry, Ph.D. Dean, School of Arts & Sciences



Ryan Grey, a member of Boy Scout Troop 540, decided to construct bat houses as the final project on his trail to Eagle. Ryan came to understand the problem bats were having with habitats through the efforts of his father, Mark Grey, and the work of the township's Gwynedd Green Committee. The Committee had decided to build wooden bat houses and install them on trees and posts across the township to help the bats repopulate their numbers. According to Ryan "I was certain this was something I could help with and thought it would make a great Eagle Scout project". Eagle Scout is the highest rank in Boy Scouts. In 2013, approximately 4 percent of all Boy Scouts earned the Eagle Scout rank which was first awarded in 1912.

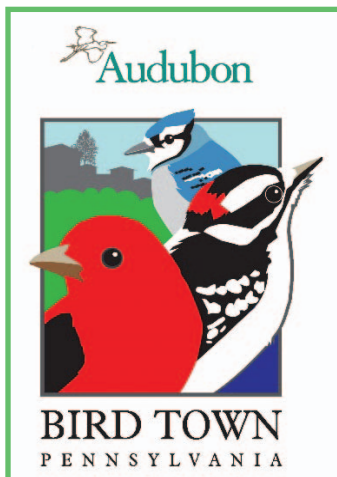
According to the United States Geological Society, "since the winter of 2007-2008, millions of bats have died from a devastating disease known as White-nose syndrome. The disease is named for the white fungus, *Pseudogymnoascus destructans*, which infects skin of the muzzle, ears and wings of hibernating bats." The disease somehow causes bats to wake up from their deep sleep in the middle of winter, which ultimately kills them from exposure and starvation. Currently, there is no treatment for the disease available for the bats, causing the population to drastically decrease by over 80% in the Northeast alone.



Gwynedd Mercy University is in a consortium of Schools that are researching the disease. Recently a senior Biology student did an in depth research study concerning the White-nose syndrome. The White Nose Syndrome killed thousands of Bats in Eastern PA, NJ and Delaware according to the thesis. These houses will enable the Bats to replenish their population and control the insect population in the area. Ryan and the students installed seven bat houses around the campus. Donations for the materials were provided by the Ambler Rotary Club.

## WELCOME TO BIRD TOWN! WHAT DO THOSE SIGNS MEAN?

*By Steven Saffier, Audubon Pennsylvania*



Lower Gwynedd Township has become the 24th Audubon Bird Town in Pennsylvania and the fifth in Montgomery County. The township's environmental committee, Gwynedd Green, will work closely with Audubon Pennsylvania and community partners to provide information to residents on ways to create healthier, more sustainable and bird-friendly landscapes while addressing issues such as stormwater management and pesticide usage.

The Township is in the Wissahickon watershed, an area of land that contains quality habitat and a critical part of the Atlantic Flyway, the super-highway of bird migration. Lower Gwynedd, with its open space, trail system, and wooded developments, provides rich resources to wildlife and opportunities for people experience nature in their backyard and beyond.

Homes and other properties can be an important part of healthy habitat and can be recognized through Audubon's Bird Habitat Network; residents can register their property, learn more about how to care for the nature around them, and receive incentives such as a business discount card. Homeowners can go to <http://pa.audubon.org> and select the "register your yard" button to start. There is useful information on the website to help you improve your ecological footprint.

Stewardship workshops, bird walks, and other presentations are being scheduled for Bird Town residents. Please check the website and be sure to like us on Facebook ([birdtownpa](http://birdtownpa)) where updates are posted.

Audubon is proud to be working with Lower Gwynedd Township and looks forward to many years of nature education and improved landscapes for birds and people! For more information, please contact Steven Saffier of the Gwynedd Green Committee [ssaffier@audubon.org](mailto:ssaffier@audubon.org).



# Lower Gwynedd Business Association Directory



[www.lowergwynedd.biz](http://www.lowergwynedd.biz)

## Community Services

### Education

- 01 C4** **Gwynedd Mercy Academy** · 816 Norrisstown Road  
(215) 646-4916 · [www.GmaElem.org](http://www.GmaElem.org)
- 02 A1** **Gwynedd Mercy University** · 1325 Summeytown Pike  
(215) 646-7300 · [www.gmeryu.edu](http://www.gmeryu.edu)
- 03 F1** **Lower Gwynedd Elementary School**  
571 Houston Road · (215) 619-8100 · [www.wsdweb.org](http://www.wsdweb.org)
- 04 F2** **Wissahickon Middle School**  
500 Houston Road · (215) 619-8110 · [www.wsdweb.org](http://www.wsdweb.org)
- 05 E1** **Wissahickon High School**  
521 Houston Road · (215) 619-8112 · [www.wsdweb.org](http://www.wsdweb.org)

### Municipal

- 06 A3** **Lower Gwynedd Township Building**  
1130 N. Bethlehem Pike · (215) 646-5302  
[www.LowerGwynedd.org](http://www.LowerGwynedd.org)
- 07 A3** **Fire** · 1130 N. Bethlehem Pike · (215) 646-1266
- 08 A3** **Police** · 1130 N. Bethlehem Pike · (215) 646-5300

### Worship

- 09 E1** **Bethlehem Baptist Church** · 712 Penllyn Pike  
(215) 643-4977 · [www.bbcchrst.org](http://www.bbcchrst.org)

### Financial

### Accounting

- 10 E4** **Francis J. DeCembrino, PC**  
714 N. Bethlehem Pike, Suite 102  
(215) 628-2494 · [www.DeCembrinoFJ.com](http://www.DeCembrinoFJ.com)
- 11 C5** **Gable Peritz Mishkin, LLP – CPAs**  
323 Norrisstown Road · (215) 628-0500 · [www.gpmlp.net](http://www.gpmlp.net)
- 11 B3** **Morey, Nee, Buck & Oswald – CPAs**  
1120 N. Bethlehem Pike · (610) 882-1000 · [www.MoreyCpa.com](http://www.MoreyCpa.com)
- 12 D3** **Sierchio and Towsey Certified Public Accountants LP**  
921B N. Bethlehem Pike, Suite 301  
(215) 393-8221 · [www.DanSierchio.com](http://www.DanSierchio.com)

### Banking

- 13 F4** **Ambler Savings Bank** · 155 E. Butler Avenue  
(215) 646-8400 [www.AmblerSavingsBank.com](http://www.AmblerSavingsBank.com)
- 14 C2** **First Niagara Bank** · 1017 N. Bethlehem Pike  
(215) 283-9586 · [www.fnbg.com](http://www.fnbg.com)
- 15 E4** **Susquehanna Bank** · 800 N. Bethlehem Pike  
(215) 643-6046 · [www.Susquehanna.net](http://www.Susquehanna.net)
- 16 A3** **Wells Fargo** · 1140 N. Bethlehem Pike  
(215) 540-0500 · [www.WellsFargo.com](http://www.WellsFargo.com)

### Credit Union

- 17 A4** **Merck Sharp & Dohme Federal Credit Union**  
335 W. Butler Avenue · Chalfont, PA 18914  
(215) 996-3744 · [www.msdcu.org](http://www.msdcu.org)

### Investments & Financial Planning

- 17 D3** **AC Capital Management** · 1001 N. Bethlehem Pike  
(215) 283-4811 · [www.ACcapitalManagement.com](http://www.ACcapitalManagement.com)

## Health & Wellness

### Chiropractic Care

- 37 D3** **ActiveCare Rehabilitation & Chiropractic**  
921B N. Bethlehem Pike, Suite 101 · (267) 419-8422  
[www.GoActiveCare.com](http://www.GoActiveCare.com)
- 38 F4** **Ambler Chiropractic** · 332 N. Bethlehem Pike  
(215) 643-2250 · [www.AmblerChiropractic.net](http://www.AmblerChiropractic.net)
- 39 F4** **Land Chiropractic** · 617 N. Bethlehem Pike  
(215) 643-0700 · [www.LandChiropractic.com](http://www.LandChiropractic.com)

### Health Center

- 40 F4** **Abington Health Center** · 605 N. Bethlehem Pike  
(215) 361-4406 · [www.AbingtonHealth.org](http://www.AbingtonHealth.org)

### Dental & Orthodontic Care

- 41 E3** **Dr. Bruce J. Cutilli Oral Surgery & Dental Implants**  
809 N. Bethlehem Pike · (215) 591-9354  
[www.CutilliOralSurgery.com](http://www.CutilliOralSurgery.com)
- 42 D3** **Norman J. Graulich, DMD: Family Dentist**  
833 N. Bethlehem Pike · (215) 646-8887  
[www.NormanGraulich.com](http://www.NormanGraulich.com)
- 43 C3** **Gwynedd Dental Associates and Spa**  
921 N. Bethlehem Pike · (215) 646-4767  
[www.GwyneddDentalAndSpa.com](http://www.GwyneddDentalAndSpa.com)
- 44 B3** **Stelzer Dental** · 1108 N. Bethlehem Pike, Suite 2  
(215) 646-5777 · [www.StelzerDental.com](http://www.StelzerDental.com)

### Med Spa

- 45 A3** **Strella MedSpa** · 1108 N. Bethlehem Pike, Suite 4  
(215) 793-9999 · [www.StrellaMedSpa.com](http://www.StrellaMedSpa.com)

### Massage Therapy

- 46 E3** **Blend Therapies Massage Studio** · 809 N. Bethlehem Pike, Bldg. E · (215) 646-6459 · [www.BlendTherapies.com](http://www.BlendTherapies.com)

### Vision Care

- 47 D4** **Linder Opticians** · 832 N. Bethlehem Pike · (215) 646-1616
- 48 B1** **Ophthalmology Physicians & Surgeons**  
909 Summeytown Pike, Suite 201 · (215) 672-4300 x109  
[www.EyeOps.com](http://www.EyeOps.com)
- 49 C2** **Springhouse Eye Associates** · 1005 Penllyn Pike  
(215) 628-8799 · [www.DrsWeidigandBrenningOptometry.net](http://www.DrsWeidigandBrenningOptometry.net)

### Retail

### Clothing

- 50 A2** **Bowties Style: Boutique** · 1121 N. Bethlehem Pike  
(267) 470-4196 · [www.Bowties-Style.com](http://www.Bowties-Style.com)
- 51 D3** **Chickie's Daughter** · 901 N. Bethlehem Pike  
(215) 628-2277 · [www.facebook.com/ChickiesDaughter](http://www.facebook.com/ChickiesDaughter)
- 52 D3** **Flynn O'Hara School Uniforms** · 901 N. Bethlehem Pike  
(215) 637-4600 · [www.FlynnOHaras.com](http://www.FlynnOHaras.com)
- 53 D3** **Sisters' the Unique Boutique**  
909 B. N. Bethlehem Pike · (215) 283-1959

### Fitness

- 54 E3** **Born To Run** · 821 N. Bethlehem Pike  
(215) 641-0410 · [www.BornToRunInc.com](http://www.BornToRunInc.com)

## Services

### Fitness & Recreation

- 73 E3** **Girls on the Run** · 805 N. Bethlehem Pike  
(215) 540-0813 · [www.gotrPA.org](http://www.gotrPA.org)
- 74 E3** **Fast Twitch Training, Inc.** · 805 Bethlehem Pike  
(215) 628-8811 · [www.FastTwitchTrainingInc.com](http://www.FastTwitchTrainingInc.com)
- 75 E3** **Motivate Fitness** · 809 N. Bethlehem Pike  
(215) 643-8877 · [www.MotivateFitnessPA.com](http://www.MotivateFitnessPA.com)
- 76 B2** **PGA Philadelphia Section** · 1009 Penllyn Pike  
(215) 886-7742 · [www.PhiladelphiaPGA.com](http://www.PhiladelphiaPGA.com)
- 77 D3** **The Little Gym** · 909 N. Bethlehem Pike  
(215) 793-4883 · [www.TLGSpringHousePA.com](http://www.TLGSpringHousePA.com)
- 78 B5** **Ambler Area YMCA** · 1325 McKean Road  
(215) 628-9950 · [www.PhilaYMCA.org](http://www.PhilaYMCA.org)

### Funeral

- 114 F4** **Anton B. Urban Funeral Home** · 1111 S. Bethlehem Pike  
(215) 646-8556 · [www.UrbanFuneralHome.com](http://www.UrbanFuneralHome.com)
- 79 F4** **Shaefr-Myers Funeral Home** · 145 Tennis Avenue  
(215) 646-0595 · [www.OneFromHeart.com/FuneralHome](http://www.OneFromHeart.com/FuneralHome)

### Hair & Nails

- 80 D3** **Dirty Blonde Salon** · 901 N. Bethlehem Pike · (215) 643-5833
- 81 E3** **Made Ya Look** · 821 N. Bethlehem Pike  
(215) 646-1335 · [www.MadeYaLook.biz](http://www.MadeYaLook.biz)
- 82 D3** **Ultimate Illusions Hair Salon**  
901 N. Bethlehem Pike · (215) 619-4780

### Home Improvement

- 83 B3** **Blue Bell Kitchens** · 1104 N. Bethlehem Pike  
(215) 646-5442 · [www.BlueBellKitchens.com](http://www.BlueBellKitchens.com)
- 84 D3** **Eagle Kitchens & Design Studio, LLC**  
903 N. Bethlehem Pike · (215) 641-1900  
[www.Eagle-Kitchens.com](http://www.Eagle-Kitchens.com)
- 85 B3** **Ernst Brothers Designers & Builders**  
1104 N. Bethlehem Pike · (215) 453-5124 · [www.ErnstBrothers.com](http://www.ErnstBrothers.com)
- 86 C2** **Harth Builders Design - Build Remodelers**  
952 Penllyn Pike · (215) 654-0364 · [www.HarthBuilders.com](http://www.HarthBuilders.com)
- 87 D3** **Old Village Master Painters**  
PO Box 165 Gwynedd Valley, PA 19437 · (215) 540-0196  
[www.OldVillageMasterPainters.com](http://www.OldVillageMasterPainters.com)
- 88 D3** **Rock Solid Foundation & Structural Repair**  
(215) 646-0889 · [www.RockSolidPA.com](http://www.RockSolidPA.com)
- 87 D3** **SGO Designer Glass** · 903 N. Bethlehem Pike  
(215) 646-5077 · [www.SGOpd.com](http://www.SGOpd.com)
- 88 D3** **Spring House Window & Door** · 908 N. Bethlehem Pike  
(215) 283-9000 · [www.GodsSpringhouse.com](http://www.GodsSpringhouse.com)

### Insurance

- 89 E3** **Allstate Insurance** · 809 N. Bethlehem Pike · (215) 643-7240  
[www.AllstateAgencies.com/DDougherty/Welcome](http://www.AllstateAgencies.com/DDougherty/Welcome)
- 90 E4** **Bruckner Insurance Agency** · 805 N. Bethlehem Pike,  
(215) 542-2999 · [www.BrucknerInsurance.com](http://www.BrucknerInsurance.com)
- 91 C5** **Miller Insurance Associates**  
550 Norrisstown Road · (215) 646-0550 · [www.miapro.com](http://www.miapro.com)



produced by the



LOWER GWYNEDD BUSINESS ASSOCIATION  
www.lowergwynedd.biz.com

Montgomeryville







**KEY**

- Community Services (light blue circle)
- Financial (dark blue circle)
- Food & Dining (green circle)
- Health & Wellness (purple circle)
- Retail (orange circle)
- Services (red circle)

map is not to scale

Blue Bell

Ambler

D

E

F

D

E

F

5

4

3

2

1



## 18 F4 Burke, Lawton, Brewer & Burke

516 N. Bethlehem Pike · (215) 643-9100 · www.blbb.com

## 19 D3 The Sierchio Financial Group

921B N. Bethlehem Pike, Suite 301 · (215) 393-8221  
www.DanSierchio.com

## 20 E4 Wealth Builder Advisor · 805 N. Bethlehem Pike

(215) 646-0160 · www.WealthBuilderAdvisors.com

## Lenders

### 21 E2 Maverick Funding Corporation

617 Dager Road · (610) 312-4232

### 22 D3 Multifunding · 921A Bethlehem Pike, Suite 206

(800) 276-0690 x11 · www.Multifunding.com

## Mortgage

### 23 D3 Leo Mortgage, Inc. · 921A N. Bethlehem Pike, Suite 208

(215) 542-9900 · www.LeoMortgage.com

## Food & Dining

### American

#### 24 D3 Andy's Diner · 900 N. Bethlehem Pike

(610) 246-4097 · www.AndysDinerAndPub.com

#### 25 D3 Rich's Other Place · 924 N. Bethlehem Pike

(215) 628-9737 · www.RichsDeli.com/other.html

#### 28 B3 Spring House Tavern · 1032 N. Bethlehem Pike

(215) 646-1788 · www.SpringHouseTavern.com

#### 27 B1 William Penn Inn · Rte 202 & Summeytown Pike

(215) 699-9272 · www.WilliamPennInn.com

## Deli/Convenience

#### 29 E4 Wawa, Inc. · 740 N. Bethlehem Pike

(215) 641-0866 · www.Wawa.com

## Frozen Yogurt

#### 29 D4 YoJones Yogurt · 832 N. Bethlehem Pike

(215) 367-5749 · www.Yojones.com

## Italian

#### 30 B3 Arpeggio Restaurant (BYOB)

542 Springhouse Village Center  
(215) 646-5055 · www.ArpeggioByob.com

#### 31 D3 IL Giardino Pizzeria Café (BYOB)

907 N. Bethlehem Pike  
(215) 646-8034 · www.ILGiardinoPA.com

#### 32 D3 San Marco Ristorante · 504 N. Bethlehem Pike

(215) 350-4376 · www.SanMarcopa.com

#### 33 A2 Tony Roni's Pizza · 1121 N. Bethlehem Pike

(215) 591-3900 · www.TonyRonis.com

## Specialty Foods

#### 34 D3 "A" Taste of Italy · 901 N. Bethlehem Pike

(215) 653-7966 · www.TasteOfItalySpringhouse.com

#### 35 C3 Feast & Fancy, Inc.

1005 N. Bethlehem Pike · (215) 628-9401

#### Whole Foods Market · 1210 N. Bethlehem Pike

(215) 646-6300 · www.WholeFoods.com

## Health & Wellness

### Acupuncture

#### 36 C3 Dana Harbison P.C. · 1000 N. Bethlehem Pike

(215) 837-9538 · www.SpringhouseWellness.com

## Flowers & Gifts

#### 55 C3 Valleygreen Flowers and Gifts · 1013 N. Bethlehem Pike

(215) 628-3550 · www.ValleyGreenFlowers.com

## Gifts

#### 56 D3 Artisans 3 Gallery · 901 N. Bethlehem Pike, #903

(215) 643-4504 · www.Artisans3Gallery.com

## Health

#### 57 A2 Village Pharmacy at Spring House

1121 N. Bethlehem Pike, Suite 40 · (215) 646-1691  
www.VillagePharmacyAtSpringHouse.com

## Home

#### 58 D3 Cotswold Home · 901 N. Bethlehem Pike · (215) 646-7900

www.CotswoldHome.com

#### 59 C3 Frame Cellar · 1000 N. Bethlehem Pike · (215) 646-1890

www.FrameCellarIncAndWallpaperStudio.weebly.com

#### 60 D3 Wallpaper Studio

1000 N. Bethlehem Pike · (215) 643-5708  
www.FrameCellarIncAndWallpaperStudio.weebly.com

#### 61 A2 Sherwin Williams · 1121 N. Bethlehem Pike, Suite 10

(215) 646-8840 · www.Sherwin-Williams.com

## Technology

#### 62 D3 Verizon Wireless Zone · 912 N. Bethlehem Pike

(215) 540-8005 · www.WirelessZone.com/ambler

## Services

### Auto

#### 63 F4 Bergery's Ford · 700 N. Bethlehem Pike

(215) 793-3700 · www.Bergerysford.com

#### 64 B3 Hannum's Automotive Services · 1100 N. Bethlehem Pike

(215) 628-8747 · www.GulfOil.com/StationLocator.aspx

#### 65 D3 Nelson & Campbell Auto Tags · 909 N. Bethlehem Pike

(215) 542-9501 · www.NelsonsAutoTagsInc.com

#### 66 C3 RJS Auto Tags & Notary · 1009 N. Bethlehem Pike

(215) 542-5858 · www.RobertJStillwell.com

#### 67 F4 West German BMW · 525 N. Bethlehem Pike

(215) 643-3322 · www.WestGermanMotors.com

## Cleaners

#### 68 C3 Lisa's Cleaners · 1008 N. Bethlehem Pike

(215) 654-0720

## Commercial Cleaning

#### 69 D1 Helts Building Services · 650 Sentry Parkway, Suite 208

Blue Bell, PA 19422 · (484) 532-7269  
www.HeltsMidAtlantic.com

## Community Services

#### 113 A4 T.H.A.N.K.S. The Helping a Needy Kid Society

1455 Sloan Way · (610) 805-8060 · www.ThankSociety.org

## Construction

#### 70 A3 Sal Paone Builder · 1120 N. Bethlehem Pike · PO Box 280

(215) 542-1331 · www.SalPaoneBuilder.com

## Education

#### 71 A2 Club Z! In-Home Tutoring Services

1121 N. Bethlehem Pike, 60-157 · (610) 226-2001  
www.ClubZTutoring.com

## Electrical Inspection

#### 72 E4 United Inspection Agency

716 N. Bethlehem Pike, Suite 300  
(215) 542-9977 · www.UnitedInspectionAgency.com

## Mooney Insurance Brokers

(215) 358-0197 · www.MooneyBrokers.com

#### 93 A3 Smith Insurance Associates, Inc.

1120 N. Bethlehem Pike, 2nd Floor  
(215) 542-5959 ext.113 · www.SmithInsurance.com

#### 94 D3 State Farm Insurance · Linda M. Ervin

901 N. Bethlehem Pike · (215) 643-4070 · www.LindaErvin.net

#### 95 D2 Robert J. Stillwell Insurance Agency

1009 N. Bethlehem Pike · (215) 643-3490  
www.RobertJStillwell.com

#### 96 B1 Summit Land Transfer, Inc.

909 Summeytown Pike, Suite 108 · (215) 654-1500  
www.SummitLandInc.com

## Land Planning

#### 97 B3 Woodrow & Associates · 1108 N. Bethlehem Pike, Suite 5

(215) 542-5648 · www.WoodrowAssociates.com

## Law

#### 98 C3 Law Office of Margaret S. Phiambolis

1012 N. Bethlehem Pike, Suite 103  
(215) 628-8227 · www.PhiambolisLaw.com

## Marketing

#### 99 C3 Inertia Marketing and Design

1018 N. Bethlehem Pike, Suite 201A · (267) 470-4070 x. 11  
www.InertiaMoves.com

## Pet Care

#### 100 F4 Canine Country, Inc. · 617 N. Bethlehem Pike, Suite A

(215) 641-9663 · www.CanineCountry.org

## Real Estate

#### 101 A4 Berkshire Hathaway HomeServices Fox & Roach, Realtors · 1600 N. Bethlehem Pike, Suite 100

(215) 542-1770 · www.FoxRoach.com

#### 102 D3 Equity Appraisal Co.

909 N. Bethlehem Pike, Suite 201 · (215) 646-6688

#### 103 A4 The Rheta Santangelo Team · Berkshire Hathaway HomeServices Fox & Roach, Realtors · 1600 N. Bethlehem Pike, Suite 100 · (215) 913-5000 · www.Rheta.com

PG Commercial Real Estate · 1012 Bethlehem Pike  
(215) 793-0406 · www.PGOfficeSpace.com

#### 104 C3 Spring House Properties · 1012 N. Bethlehem Pike, Suite 100

(215) 646-1505

#### 105 E4 Somerset Properties · 768 N. Bethlehem Pike, Suite 203

(215) 283-2960 · www.SomProp.com

#### 106 E4 Stoltz Management Company · 725 Conshohocken State Road

Bala Cynwyd, PA 19004 · (610) 667-5800 · www.StoltzUSA.com

#### 107 A1 Foulkeways at Gwynedd · 1120 Meetinghouse Road

(215) 643-2200 · www.Foulkeways.org

#### 108 C5 Gwynedd Estates

ACTS Retirement-Life Communities, Inc.  
301 Norrisown Rd. · (215) 628-8840  
www.ActsRetirement.org

#### 109 C5 Spring House Estates

ACTS Retirement-Life Communities, Inc.  
728 Norrisown Road · (215) 628-8110  
www.ActsRetirement.org

#### 110 D4 Spring House Travel · 832 N. Bethlehem Pike

(215) 643-7074 · www.SpringHouseTravel.com



# PARKS AND RECREATION

## REGISTRATION

- Preregistration is required for all programs unless otherwise indicated.
- Registrations are accepted at the Township Building or via mail with payment and completed form(s).  
No phone registrations are accepted.
- Registration forms can be found on the Township Website [lowergwynedd.org](http://lowergwynedd.org)
- Full payment must accompany each registration for it to be accepted. Registrations are accepted as space permits.

**PAYMENTS:** We accept cash, checks (please make checks payable to Lower Gwynedd Township), and credit cards. There is a service fee for paying by credit cards. We do not accept debit cards. There will be a \$25 service charge on all returned checks.

**REFUNDS:** All refunds requested by the registrant that are granted will be charged a \$5 administrative fee. Full refunds will be issued only if the Parks & Recreation Department cancels a program. All discounted tickets sales are final and non-refundable.

**CANCELLATION POLICY:** Programs are subject to cancellation if there is insufficient enrollment, inclement weather, or other reasonable causes

**PHOTO POLICY:** The Parks & Recreation Department may take photos of program participants or park visitors. Please be aware that these photos are for Township use only and may appear in future brochures, newsletters, or flyers.

## EASTER EGG HUNT

**Date:** Saturday March 28  
**Location:** Penllyn Woods  
**Time:** 10 a.m. – 11 a.m.



## Discounted Ski & Amusement Park Tickets

The Parks & Recreation Department offers Discounted Ski tickets to area Ski Resorts from December through March. May through September a variety of discounted tickets are available for amusement parks. Tickets can be purchased at the Township Building Monday through Friday 8:00 a.m. – 4:00 p.m. For a complete listing of the tickets available visit the Parks & Recreation page on the Township Website, [www.lowergwynedd.org](http://www.lowergwynedd.org)

## Thursday Knitting Group

This group meets at the Penllyn Woods Community Building every Thursday afternoon (except for Holidays) from 1 p.m. – 3 p.m. If you have questions on a pattern, want to learn how to knit or crochet please join us.



## Trail Clean Up

Please join us as we focus on cleaning up some of the trails in the Township. There is no rain date in the event of inclement weather.

**Date:** Saturday April 11  
**Meeting Location:** Lower Gwynedd Township Building ~ Rear Parking Lot  
**Time:** 9 a.m.

## BUS TRIPS



### CIVIL WAR BATTLEFIELD TOUR ~ GETTYSBURG

We recently marked the 150th Anniversary of the Battle of Gettysburg. This trip will take us on a guided tour of the battlefield, a tour of the National Military Park Museum. Lunch will be at the Historic Dobbin House. We wrap up the day by touring the Jennie Wade House, Ms. Wade was the only civilian killed during the battle of Gettysburg. Cost of the trip includes all entrance fees, lunch and gratuities.

**Date:** Saturday May 16  
**Bus Departure Time:** 7:30 a.m.  
**Bus Departure Location:** Upper Gwynedd Township  
**Cost:** \$159 per person (includes all gratuities and entrance fees, lunch)



### THE KING AND I

Tells the story of Anna, a British governess who tries to help an Eastern King come to terms with the modern world. Don't miss this revival of the Rogers and Hammerstein classic. Playing at the Vivian Beaumont Theatre located in the Lincoln Center Complex.

**Date:** Saturday June 13  
**Bus Departure Time:** 8 a.m.  
**Bus Departure Location:** Upper Gwynedd Township  
**Arrive Home:** approximately 8 p.m.  
**Cost:** \$179 per person



### YANKEES

**Date:** Saturday June 20  
**Bus Departure Time:** 12:00 (Noon)  
**Bus Departure Location:** Upper Gwynedd Township  
**Cost:** \$139 per person  
**Seat Location:** Section 227B  
Seats are limited for this game



## PENLLYN WOODS COMMUNITY BUILDING

Need a place to a party, baby shower, bridal shower? Consider using the Penllyn Woods Community Building. For more information about the facility contact Sandi Feight, Recreation Director 215-646-5302.



# PARKS AND RECREATION



## WISSAHICKON VALLEY PUBLIC LIBRARY PROGRAMS *In Lower Gwynedd Township*



### 2ND THURSDAY PRESENTS SERIES

**Time:** 2:00 p.m.

**Location:** Lower Gwynedd Township Building

**April 9** – Lindsay Blanton, Water Quality Outreach Coordinator, Wissahickon Valley Watershed.

In this presentation, the WVWA will discuss

the history and development of the Wissahickon Creek, and how this has impacted the health of the water.

### SPECIAL PROGRAM ADDITION TECH QUESTION & ANSWER

Wednesday April 15 ~ 1:00 p.m. – 4:00 p.m.

Lower Gwynedd Township Building  
Staff and volunteers will be on location to help you with any questions you have regarding your electronic devices. Devices you can bring; tablet computer (iPad, Droid), e-readers (Kindle, Nook), Smart Phones (iPhone, Droid). Appointments are required for this program. Please call the Blue Bell Library at 215-646-1320 to setup your 30 minute appointment.

**Disclaimer:** *The Library's intent is to help people learn the use of their devices. The library does not assume responsibility for devices that are not working property and can't fix devices.*

### STORIES TIME AT OXFORD PARK

Wednesdays July 1 – July 29

Join Ms. Tegan from the Wissahickon Valley Public Library Blue Bell Branch as she visits Oxford Park on Wednesday mornings for story time. Each week she will bring a new book to read to the children. Come join us for a nice relaxing story time.

**Time:**

10:30 a.m.–11:30 a.m.

**Location:** Oxford Park Picnic Pavilion

**Ages:** 2-6 years



### Summer Library Reading Club

Looking for something to do this summer? Wissahickon Valley Public Library wants to invite you to join our Summer Reading Club! Everyone, from kids to adults, teens and babies, is welcome to join our club.

This Summer Reading Club is a way for you to track your reading and get prizes for your reading. After you've signed up for our clubs, be sure to check out all of our Summer Events for kids, teens, and adults at our libraries in Blue Bell and Ambler. We'll have lectures and performers, classes, and more!

Look for information at WVPL.org



### Trail Dusters

Do you know where all the trails are located in the Township? Have you seen a path but not sure where it goes? Join us as we explore a trail a week. Meetings locations vary each week and upon registering for the program you will receive a list of where the group is meeting.

**Dates:** Tuesday and Thursdays April 7–May 21

**Time:** 6:00 p.m. – 7:00 p.m.

**Location:** Varies each week, participants will receive a list of walking locations upon registering for the program.

**Cost:** \$5 per person



### Book Trail

The Parks & Recreation Department has teamed up for the third year to offer a Book Trail program in collaboration with the Wissahickon Valley Public Library. This year the trail we will be Treweryn Farm Trail. The Pennsylvania One Book Every Young Child Book 2015, Number One Same by Greg Pizzoli. Families are welcome, as you walk the trail you stop at book pages and read the book. For information, call 215-646-5302.

**Date:** Saturday April 25 • **Time:** 10 a.m.–Noon

**Location:** Treweryn Farm Trail

### UPPER DUBLIN RACQUET CLUB

established in 1968 as the premium East Coast indoor/outdoor facility. In 2009, we became Upper Dublin Sports Center.



680 Tennis Ave. Ambler PA 19002  
215-643-7377

### INSTILLING THE LOVE OF TENNIS

**Dates All Classes: Session 1:** Tuesdays, April 7 – April 28 • **Session 2:** Tuesdays, May 5 – May 26

**Location:** Penllyn Park • **Future Stars (8 and under)** • **Time:** 4-5pm

**Cost:** \$105 per session per person

Our experienced teaching pro's are very passionate about teaching tennis and getting kids excited about this lifetime sport. Here, the youngest player learn on courts and with equipment "right sized" just for them and that help facilitate quick success and enjoyment of the game that lasts a lifetime.

#### Ultimate Tennis (Ages 9-11)

**Time:** 5-6pm

**Cost:** \$105 per session per person

This program is geared towards juniors continuing to improve stroke production with an emphasis on consistency, point play and serves. Our Teaching pro's enjoy sharing their information and passion to ensure a positive learning environment for your child.

#### Adult Quickstart Tennis

**Time:** 6-7pm

**Cost:** \$95 per session per person

This is the easiest and most fun way to learn tennis. This program is for people that have never played before or only played a few times before. Let Tuesday nights be your tennis night!



#### CHEERLEADING CAMP

#### BASKETBALL CAMP

**Date:** August 10 - 14

**Ages:** 3-4 year olds

**Time:** 9:00 a.m. – 10:00 a.m.

**Cost:** \$59 per participant

**Ages:** 5-12 year olds

**Time:** 9 a.m. – Noon

**Cost:** \$ 119 per participant

**Location:**

Oxford Park

**Date:** August 10 - 14

**Ages:** 3-4 year olds

**Time:** 9:00 a.m. – 10:00 a.m.

**Cost:** \$59 per participant

**Ages:** 5-12 year olds

**Time:** 9 a.m. – Noon

**Cost:** \$ 119 per participant

**Location:**

Oxford Park



# PARKS AND RECREATION

## SEWING CLASSES



### FABRIC PURSE

Make a purse with a magnetic snap closure that is decorated with ribbon, inside pockets and optional key fob. Suitable for students who are comfortable using a sewing machine and buying fabric. First

class we'll discuss the materials list for supplies that the students need to buy before the second class and we'll go over sewing machine operations. Students are involved in all steps of construction. Leave your machine at home, we provide equipment. Adults 18 years and older.

**Length:** 5 sessions; 3 hours each.

**Dates:** Saturdays, April 11- May 9

**Time:** 9 a.m. – Noon

**Location:** Penllyn Woods Community Building

**Cost:** \$145 per person

### APPLIQUE PILLOW

Learn to create a 20" square pillow with an applique design. Suitable for students who took our basic pillow class or are familiar using a sewing machine and buying fabric. First class we'll discuss the materials list for supplies that the students will need to buy before the second class, we'll practice applique techniques, and review machine operations. In addition to learning applique, student may choose to finish their pillow with hand stitching or a zipper. Leave your machine at home, we provide equipment. Be prepared for visually close work – bring reading glasses if needed. Adults 18 years and older.

**Length:** 3 Nights; 2 hours each.

**Dates:** Wednesdays May 13 - 27

**Time:** 6:00 p.m. – 8:0 p.m.

**Location:** Penllyn Woods Community Building

**Cost:** \$75 per person

### HAND SEWING

A practical and useful class for anyone faced with a need to fix a minor clothing problem: sew a button, hem pants or skirts, mend a hole, and repair a seam. The first class students may bring in a garment that needs repair - we'll go over some basic stitches and what the students should bring the second class to actually fix their garment. Be prepared for visually close work – bring reading glasses if needed. Adults 18 years and older.

**Length:** 2 Nights; 2 hours each.

**Dates:** Wednesdays, June 3 and June 10

**Time:** 6:00 p.m. – 8:0 p.m.

**Location:** Penllyn Woods Community Building

**Cost:** \$55 per person



### EVERYDAY MACHINE SEWING

If you thought your sewing machine was only for sewing straight seams, this class will introduce you to techniques to use your machine to attach a flat button, hemming, mending, and seam repair. We'll also cover topstitching and decorative stitches. Leave your machine at home, we'll provide equipment and supplies. Be prepared for visually close work – bring reading glasses if needed. Adults 18 years and older.

**Length:** 2 Nights; 2 hours each. • **Dates:** Wednesdays, June 17 and June 24 • **Time:** 6:00 p.m. – 8:0 p.m.

**Location:** Penllyn Woods Community Building • **Cost:** \$55 per person

## SUMMER CAMP

*All Registrations must be post marked or dropped off by Wednesday May 22, 2015 any registrations received after a \$50 Late Fee will be applied*

### 2015 SUMMER CAMP REGISTRATION

Summer Camp program will be held at the Wissahickon Middle School with use of the Pool. For further information regarding the camp please call the Township Building, registration forms can be downloaded off the Township Website [www.lowergwynedd.org](http://www.lowergwynedd.org). You can also pay for the summer camp fees on-line, the registration forms must still be mailed or dropped off at the Township Building.

**Please call the Recreation Director with any questions.**

**Dates:** June 22–July 31 • **Time:** 9:00 a.m.–3 p.m. • **Ages:** 6 (or completed Kindergarten)–12 years

**Post Camp:** 3:00 p.m. – 5:00 p.m. (additional cost) – \$330 per child

**Location:** Wissahickon Middle School • **Daily Swimming:** Wissahickon Middle School

\$615 first resident child  
\$550 for each additional resident child  
\$715 first non-resident child  
\$680 for each additional non-resident child

### WEEKLY RATES FOR 2015

\$ 200 first resident child  
\$ 175 for each additional resident child  
\$ 250 first non-resident child  
\$ 225 for each additional non-resident child

### SUMMER CAMP COUNSELORS ~ Application Deadline: April 17, 2015

Applications for Summer Camp Counselors are being accepted. All applicants must go through the interview process and complete all necessary background checks. Applicants must be 15 years of age and over.

### COUNSELORS IN TRAINING ~ Application Deadline: April 17, 2015

The CIT program is designed to train youths ages 13-14 to assist the staff with the activities and programs conducted at the summer camp. There is a \$100 fee to participate in this program – covering program administration and supervision. Successful participation in this program may be a “stepping stone” for future employment with the Parks & Recreation Department. Participants must complete an employment application, go through the interview process and complete all necessary background checks. The fee will be collected if the applicant is chosen to participant.

### GEOCACHING @ PENLLYN WOODS

Geocaching is a modern day scavenger hunt which is happening all over the world and even in your community. This activity is a great family friendly activity, a wonderful way to get exercise, explore new parks and trails. This event is being held at Penllyn Woods a variety of caches will be setup in the park. Participants are asked to bring a GPS unit if they have one or a smart phone. There will be a limited number of GPS units to use for the program.

**Dates:** Saturday May 9 • **Time:** 9-12 Noon • **Meeting Location:** Penllyn Woods Community Building

**Cost:** \$5 participants must register for this event



# PARKS AND RECREATION

## COOKING CAMPS

### LITTLE CHEFS

Campers will enjoy kid-friendly favorites for budding chefs, including oven-baked chicken fingers, homemade pasta and meatballs and more! Each member of the family will enjoy these entrees when the kids make them at home.

**Ages:** 5-9 years

**Dates:** Monday July 13-Thursdays July 16

**Time:** 10 a.m. – Noon

**Location:** Penllyn Woods Community Building

**Cost:** \$145 per participant



### COOKING AROUND THE CLOCK

Each day, we'll make foods for a different meal of the day - Breakfast, Lunch, Snacks, and Dinner. By the end of the week, your cookin' kid will be helping (or showing YOU how!) to prepare any meal, any time!

**Ages:** 10-14 years

**Dates:** Monday August 3 -Thursday August 6

**Time:** 10 a.m. – Noon

**Location:** Penllyn Woods Community Building

**Cost:** \$145 per participant

## SUMMER CONCERT SERIES AT OXFORD PARK

CONCERTS TAKE PLACE WEDNESDAY EVENINGS BEGINNING JULY 8 AT 7:00 P.M.

JULY 8 ~ MELISSA MARTIN AND THE MIGHTY RHYTHM KINGS  
*Jump Blues*

JULY 15 ~ STEVE PULLARA AND HIS COOL BEANS BAND  
*\*Grammy Winner - Children's Performer and Grammy Winner*

JULY 22 ~ CELTIC CROSSROADS  
*Traditional Irish*

JULY 29 ~ CLASS REUNION  
*1950-60 Doo Wop Band*

AUGUST 5 ~ FLOWER POWER  
*Hits from the 60's and 70's*

AUGUST 12 ~ THE BOOGIE DOGS  
*Classic Rock*

AUGUST 19 ~ MONTGOMERY COUNTY CONCERT BAND

AUGUST 26 ~ THE RIVERS ROCK A BILLY TRIO  
*1950's Rock n' Roll*



EXPERIENCE • QUALITY • TRUST

**WIG**  
West German BMW



[westgermanbmw.com](http://westgermanbmw.com)

CONVENIENCE  
SECONDS OFF THE PA TURNPIKE

NEW HEADQUARTERS IN FORT WASHINGTON

215.643.3322

Certified Pre-Owned

500 W. PENNSYLVANIA AVENUE, FORT WASHINGTON  
JUST SECONDS OFF FORT WASHINGTON  
EXIT 339 PA TURNPIKE

525 NORTH BETHLEHEM PIKE, AMBLER, PA 19002  
2 MILES NORTH OFF FORT WASHINGTON  
EXIT 339 PA TURNPIKE

Old Village  
Master Painters, Ltd.

Ed Stulb

Catering to fine residential homes

Interior/Exterior Painting  
Wallpaper Installation  
Historical Restorations  
Faux and Decorative Finishes

215.540.0196

[www.oldvillagemasterpainters.com](http://www.oldvillagemasterpainters.com)





OFFICE: (215) 283-9800  
SHOP: (215) 361-1010

## SCHNEIDER'S

PLUMBING, HOT WATER HEATERS-HEATING

**CHRIS SCHNEIDER**

P.O. BOX 362  
SPRING HOUSE, PA 19477 USA



921B N. Bethlehem Pike, Suite 301  
Lower Gwynedd, PA 19002  
(Across the street from Rich's Other Place)

**LLC & S-CORP EXPERTS**  
**INDIVIDUAL TAX PREPARATION & PLANNING**  
**10% OFF 2014 TAX RETURNS (New Clients only)**

**215-393-8221**

[www.TaxExperts.tax](http://www.TaxExperts.tax)

# Ambler Beverage Exchange

**Largest Cold Case Beer Selection in the Area!**

Huge Variety of Specialty, Imported & Domestic Beer  
Available in Cases & Kegs!  
(non-alcoholic beverages, snacks and more...)

**267-470-4854**

[www.amblerbeverage.com](http://www.amblerbeverage.com)  
259 E. Butler Ave. • Ambler, PA 19002





Complete Commercial & Residential Floral Services  
"Serving the Community Since 1986"

1013 North Bethlehem Pike • Lower Gwynedd, PA 19002  
(Next to First Niagara Bank in Spring House)  
**(215) 628-3550 • Fax (215) 628-8779**

[www.valleygreenflowers.com](http://www.valleygreenflowers.com) • email: [valleygreenfg@verizon.net](mailto:valleygreenfg@verizon.net)  
Daily Delivery to Philadelphia & Suburbs

## WILLOW GROVE DAY CAMP

Since 1955



**SUMMER PROGRAMS**  
Boys & Girls 3-15 years old  
**PICNICS & OUTINGS**

**215-659-4393**

[www.wgcamp.com](http://www.wgcamp.com)

## SELECT APARTMENTS NOW AVAILABLE



**MORE TIME – MORE FRIENDS**  
**MORE CHOICES – LIFE AT FOULKEWAYS**

Setting Standards of Excellence in Retirement Living Since 1967



1120 Meetinghouse Road  
Gwynedd, PA 19436  
**215-643-2200**  
[www.foulkeways.org](http://www.foulkeways.org)

Guided by Time-Honored  
Quaker Values



**LINDA BONFIGLIO**  
REALTOR®

ABR, ALHS, ASP, GREEN, GRI, SRES  
Direct 215-817-2991 | Office 215-628-8300  
[linda@lindabonfiglio.com](mailto:linda@lindabonfiglio.com)  
[www.lindabonfiglio.com](http://www.lindabonfiglio.com)

Setting a Higher Standard in Real Estate  
Professional Realtor®  
Buying • Selling • Relocation

**LINDA BONFIGLIO**  
REALTOR®

ABR, ALHS, ASP, GREEN, GRI, SRES

Serving Lower Gwynedd for over 25 years

Experience Makes The Difference



581 Skippack Pike  
Blue Bell, PA 19422





# Vince Hee

## ROOFING

### 215 619-ROOF (7663)

Roofing excellence  
for over 30 years

Lower Gwynedd Resident 114 Poplar Street, Ambler, PA 19002

[www.vinceheeroofing.com](http://www.vinceheeroofing.com) PA# 011264



### Kate Harper

State Representative

61st Legislative District  
[www.kateharper.net](http://www.kateharper.net)

[kharper@pahousegop.com](mailto:kharper@pahousegop.com)

610-277-3230

1515 DeKalb Pike • Suite 106  
Blue Bell, PA 19422

Follow me on Facebook



Dresher, PA 215-657-3388  
[www.burnbraedaycamp.com](http://www.burnbraedaycamp.com)



- Transportation Provided
- Boys & Girls, Ages 3-15
- 2-10 Weeks
- Professional Teaching Staff
- Extended Hours Available
- Air-Conditioned Buildings

OPEN HOUSES:

Sat 3/21, 10-2; Sun 3/22, 1-4; Sun 3/29, 1-4

Sat 4/11, 10-2; Sun 4/12, 1-4; Sun 4/19, 1-4

Sat 4/25, 10-4; Sun 4/26, 1-4

Sat, 5/2, 10-4; Sat, 5/9, 10-4

**HUGE  
discounts  
for self  
drivers &  
siblings!**

- Music • Dance • Theater • Voice • Photography • Computers
- Animation • Movie Making • Art • Pastry Arts • Writing • Fashion
- Swimming • Sports • Science • Rocketry • Legos • Robotics
- Academic Tutoring & MORE!

Cabling & Stump Grinding  
Dead Wood Removal  
Tree Removal  
& Pruning

24 Hour Emergency Service  
Free Estimates  
Fully Insured



[www.advtreecare.com](http://www.advtreecare.com) • [advtreecare1@comcast.net](mailto:advtreecare1@comcast.net)

Office: 215-643-1923 • Fax: 215-643-2410

Frank Fantini, Owner/Certified Arborist

## Nelson & Campbell Auto Tags

Quality Customer Service Since 1992

**Full-Service Tag Agency**

- Instant Registration • Instant Drivers License Renewals
- Instant Vehicle Title Transfers • Leave With Your Documents

[www.nelsonsautotagsinc.com](http://www.nelsonsautotagsinc.com)

### 215-542-9501

909 Bethlehem Pike  
Spring House, PA 19477  
Across From Rich's Other Place Deli

Penn Dot  
Authorized On-Line Agent  
Complete Notary Services

State & Service  
Fees Apply

# Excellent Kitchen.

Well made, as usual.

Guildmaster Award Winner  
GUILD QUALITY



## HARTH BUILDERS

Design • Build • Remodel



[HarthBuilders.com](http://HarthBuilders.com) | 215.654.0364 | PA#0249



## BE SERVED NOT JUST SOLD!

Brett Wetherill Dillon,  
 REALTOR®, ABR, ASR, ASP, CNE  
 BHHS Fox & Roach—Blue Bell  
 Philly 5 Star Agent  
 215-542-2200 x589 (main office)  
 610-212-1362 (mobile)



### Brett Dillon, a Lifelong Resident of Lower Gwynedd

"Brett was the absolute best Realtor (and really nice person) to work with. I had rather stringent requirements on the type of house I could buy. Brett actually took a survey of every item I absolutely had to have - and went from there. She only showed me those homes that met my criteria. I would work with her again at any time and recommend her as highly professional, competent, and very nice to work with." - Rose Corr

**NEGOTIATION \* COMMUNICATION**  
**STAGING \* MARKETING**



## Thanks for Voting Us #1



617 N. Bethlehem Pike, Ambler, PA. 19002

# 215-641-WOOF

🐾 Boarding 🐾 Grooming 🐾 Training 🐾 Daycare

Call for a FREE Training Consultation

[www.caninecountry.org](http://www.caninecountry.org)

# Arpeggio Restaurant

[www.ArpeggioBYOB.com](http://www.ArpeggioBYOB.com)



215.646.5055

909 Sumneytown Pike  
 Spring House, PA 19477

## Wellness for Life.



**Lower Gwynedd Residents:**  
**Call Now!** Learn more about your special offer!

### Fitness For 50+

Enjoy the many benefits of our comfortable, relaxed atmosphere for adults only.

- Heated Therapeutic Pool
- Fully Equipped Fitness Center
- Land and Water Classes
- Nutritional Counseling
- And more!



**Come in for a tour!**  
 Call Kelly at 215-283-2404  
[www.becomingcenter.org](http://www.becomingcenter.org)

250 N. Bethlehem Pike  
 Ambler, PA 19002



## Artisans 3 Gallery

Creatively Curated Jewelry Clothing & Gifts



Specializing in  
 products  
 Made in USA

Present ad  
 for \$5 off any item  
 over \$20



901 North Bethlehem Pike  
 Spring House, PA 19477  
 215-643-4504  
[artisansthreegallery.com](http://artisansthreegallery.com)



Lower Gwynedd Township  
 Spring House, PA 19477  
 Phone: 215-646-5302  
 Fax: 215-646-3357  
 www.lowergwynedd.org

PRSR STD  
 US POSTAGE  
 PAID  
 HARRISBURG PA  
 PERMIT NO 609



Volume 20, Number 1 • Spring 2015



This Community Newsletter is produced for Lower Gwynedd Township by **Hometown Press • 215.257.1500** • All rights reserved®  
 To Place An Ad Call *Rose Mary* At Hometown Press • 215-805-2121



**BE HEALTHY. BE STRONG. BELONG.**  
 Ambler Area YMCA

**Membership benefits include:** FREE Group Exercise Classes, FREE Consultations with a Wellness Coach, FREE Child Watch Services, access to 18 Philadelphia Freedom Valley YMCA locations and much more!



**AMBLER AREA YMCA • 1325 McKean Road, Ambler, PA 19002 • 215-628-9950 • philaymca.org**



## SPRING HOUSE

WINDOW & DOOR

908 North Bethlehem Pike  
 Spring House, Pa 19477-0244

**215.283.9000**

- The area's premier dealer for over 20 years
- We have our own factory trained installers
- We offer a lifetime warranty on installation
- Free "no pressure" in-home estimates



Mention this ad and receive a coupon, worth up to \$500 off your next purchase!  
 Valid until December 31, 2015

www.GoSpringHouse.com PA LIC# 6172



**MARVIN**  
Windows and Doors  
Built around you.



**THERMATRU**  
DOORS



**JELD-WEN**  
WINDOWS & DOORS



**SUNRISE**  
WINDOWS  
The Difference is Clear!

# ROOF TROUBLES???

## — C & C —

### FAMILY ROOFING & SIDING

**ROOFS • SHINGLES • SIDING • GUTTERS • WINDOWS**

PAHIC 000897

SENIOR CITIZEN & AARP DISCOUNTS

## 215-322-8687

### www.roofdoc.com

**\$500 OFF**

**Any Complete Roofing or Siding Job**

**C&C FAMILY ROOFING & SIDING**  
 Coupon must be presented at time of estimates. With this coupon. Not valid with other offers or prior services. Exp. 7/31/15.  
**215-322-8687**  
 Mention Code "HP" when calling for additional \$50 Discount.

**GUTTER CLEANING SPECIAL, ONLY \$125**

- Clean out all gutters & downspouts
- Bag & remove all debris
- Tighten all gutters & downspouts
- Check entire roof, flashings, vent pipes and ridge pipes (up to 100 L.F.)

**C&C FAMILY ROOFING & SIDING**  
 With this coupon. Not valid with other offers or prior services. Expires 7/31/15.  
**215-322-8687**