

Lower Gwynedd Report



MESSAGE FROM THE BOARD OF SUPERVISORS

Thirty years ago Lower Gwynedd Township was a different place. The Board of Supervisors was dealing with subdivision and land development plans virtually every month as the township was rapidly changing from large estates, rolling horse farms, isolated single family neighborhoods and small businesses along Bethlehem Pike to the thriving community that we all know and cherish today. Along the way, the Township grew from a population of 9210 to over 11,558 people today.

One of the more important parts of the Township's growth has been the successful effort to build a connected series of trails and preserve open space. Back in 1986, the only Township park was the Ingersol ballfields in Penllyn. Today, Lower Gwynedd boasts 104 acres of preserved open space across 6 parks and 25 miles of trails connecting neighbors to neighbors, neighborhoods to one another and to the downtown business district. One of the more hard fought preservation battles was the fight for Penllyn Woods Park. The Board at the time, including Supervisor Ed Brandt and then Supervisor and now State Representative Kate Harper, fought for seven years (yes, seven) against a subdivision plan for 108 houses. It dominated the headlines in the Ambler Gazette, while lawns displayed "This Family Supports Saving the Penllyn Woods" signs and cars donned "Save Penllyn Woods" bumper stickers. With the key partnership and support of the Wissahickon Valley Watershed Association, Lower Gwynedd Township prevailed in preserving this crowned jewel of 77 acres.

The current Board of Supervisors is thankful for this legacy and recognizes that open space is more than just a pretty space. The economic value of open space is measurable and quantifiable: Open space and connections to trails have a positive impact on residential property values; open space provides valuable ecosystem services such as water and air quality, flood control and storm water management; open space provides recreation, health and quality of life benefits. Money may not grow on trees but trees, trails and open space account for real dollars in terms of earnings and savings.



Next spring we will celebrate the 25th anniversary of Lower Gwynedd's purchase of the land for Penllyn Woods Park. Along with that milestone, we will celebrate our other parks and preserved land. They include Pen-Ambler Park, Oxford Park, Veterans' Park, Penllyn Park and Ingersol Park. We encourage you and all of our Lower Gwynedd residents to enjoy the trails, open spaces and verdant greenery that makes Lower Gwynedd Township such a lovely community in which to live, work and play. Cheers!

Kathleen Hunsicker, Chair



Lower Gwynedd Township PIKE FEST

**Saturday September 15
10:00 a.m. - 4 p.m.
Downtown Springhouse**

Join us for the 3rd annual Pike Fest featuring over 100 vendors, our local businesses and restaurants. Exciting additions to last year's festivities include more food trucks, a 5K run down on the Pike and Township Trails. See page 15 for more information.

Thanks to the Pike Fest Committee for their time and dedication in making this a successful event.

INDEX

Pike Fest Information.....	3
Township Directory.....	4
Gwynedd Mercy University Presidential Inauguration.....	4
Eagle Scout Award.....	4
Nominate Citizen of the Year	5
Annual Golf Outing.....	5
Notes from the Fire Marshal.....	6
North Penn Fire Company.....	7
Lower Gwynedd Police Department.....	8
Public Works Department.....	8
Recycling News.....	9
Fall Leaf/Yard Waste Collection Dates.....	9
Broken Outdoor Water or Sewer Lines.....	10
New Pedestrian Walking Bridge.....	10
Polling Locations	11
Water Conservation	12
Stormwater Management	13
Veterans Day Ceremony.....	14
Safe Battery Disposal Program	14
Pike Fest 5K Run	15
Parks & Recreation.....	16-17
Pike Fest	18
Ambler Yards Ribbon Cutting	18
PA School Bus Stopping Law	19
Award to Sgt. Mike Rogge and Telecommunicator Jack Zabinski	20
North Penn Volunteer Fire Co. New Fire Truck.....	21

**1130 N. Bethlehem Pike
P.O. Box 625
Spring House, PA 19477
Phone: 215-646-5302
Fax: 215-646-3357
www.lowergwynedd.org**



**Real Patients.
Real Smiles.**

We create exceptional smiles every day!

STELZERDENTAL
AESTHETIC AND GENERAL DENTISTRY

Actual Patient of Dr. Stelzer

Your Smile Starts Today! With our **FREE** Smile Consultation

Call Today 215-607-7720

WWW.STELZERDENTAL.COM

1108 N. Bethlehem Pike, Suite 2
Lower Gwynedd, PA 19002

(Across from the new Spring House Village Shopping Center)

- ✓ Patient friendly financing
- ✓ Complete care for the entire family
- ✓ Cosmetic Dentistry
- ✓ Dental Implants
- ✓ Zoom! In-Office Whitening



Village Pharmacy
at Springhouse

215-646-1691




- Pharmacy staff dedicated to your health and wellness
- We accept most medicare Part D Plans
- Courteous service by people who know your name

1121 N. Bethlehem Pike
Spring House, PA 19477

www.villagepharmacyatspringhouse.com

Family Owned and Operated Since 1992



Bergey's

Ford

BergeysFord.com

The new 2018 Expedition has arrived! Stop by for a test drive.



700 N. Bethlehem Pike, Ambler • 215-793-3700

Shaeff-Myers Funeral Home

215-646-0595



**Family Owned and Operated
Traditional and Cremation Services**

Richard E Myers, FD ~ Robert E Myers, Supervisor
145 Tennis Ave ❖ Ambler, PA 19002
Shaeff-Myers.com



SPRING HOUSE
WINDOW & DOOR

908 North Bethlehem Pike
Spring House, Pa 19477-0244

215.283.9000

- The area's premier dealer for over 25 years
- We have our own factory trained installers
- We offer a lifetime warranty on installation
- Free "no pressure" in-home estimates

Mention this ad and receive a coupon, worth up to \$500 off your next purchase!
Valid until December 31, 2018.

www.GoSpringHouse.com

PA LIC# 6172

MARVIN Windows and Doors
THERMA TRU DOORS
JELD-WEN WINDOWS & DOORS
SUNRISE WINDOWS The Difference is Clear!

Downtown Spring House 3rd Annual
PIKE FEST

Lower Gwynedd Township

September 15, 2018

N. Bethlehem Pike "Street Fest"

SAT., SEPT. 15
10 AM - 4 PM

VENDORS • ARTISANS • LIVE MUSIC
FOOD TRUCKS • AMUSEMENTS

PIKE FEST 5k @ 8 am.
Register at Born to Run



LGPIkeFest@LowerGwynedd.Org • 215-646-5302

TOWNSHIP NOTICES

LOWER GWYNEDD TOWNSHIP

1130 N. Bethlehem Pike • P. O. Box 625 • Spring House, PA 19477 • www.lowergwynedd.org
Administration: Phone: (215) 646-5302 • Fax: (215) 646-3357 • Police: Emergency: 911 Phone: (215) 646-5303

Board of Supervisors

Kathleen Hunsicker, Chair

Dr. J. Richard Booth, Vice-Chair

Edward J. Brandt • Stephen J. Paccione • Mark G. Grey

Township Manager: Craig McAnally
Assistant Manager: Jamie Worman
Asst. Sec.: Carole Culbreth
Police Chief: Paul Kenny
Solicitor: James J. Garrity, Esq. Wisler, Pearlstine
Engineer: Craig Kennard, Gilmore & Associates
Public Works Director: Michael DeStefano
E.I.T.; B.P.; Merc. & LST Collection:
Berkheimer Associates
Zoning Officer: Kenneth Amey
Asst. Zoning Officer: Craig McAnally
Finance Director: Steve Wiesner
Building Inspector/Plan Review:
Keystone Municipal Services
Recreation Director: Sandi L. Feight
Real Estate Tax Collector: Betty Lou Yost
Fire Marshal: Al Comly

LOWER GWYNEDD TOWNSHIP MEETING SCHEDULE

All meetings to be held in the Administrative Office at
1130 North Bethlehem Pike, Spring House

NOTE: Generally meetings are as follows except when holidays conflict:

Board of Supervisors (7:30 pm) – 2nd & 4th Tuesday

Zoning Hearing Board (7:00 p.m.) – 2nd Thursday

Planning Commission (7:00 p.m.) – 3rd Wednesday

Park & Recreation (6:30 p.m.) – 4th Tuesday

Environmental Advisory Council (7:00 p.m.) – 2nd Wednesday

Deadline for Submissions:

Zoning Hearing Board

30 days prior to scheduled meeting

Planning Commission

30 days prior to scheduled meeting

TOWNSHIP HOLIDAYS are as follows:

September 3 (Labor Day)

October 8 (Columbus Day)

November 12 (Veterans Day)

November 22-23 (Thanksgiving)

December 24 -25 (Christmas Holiday)

January 1 (New Year's Holiday)

Follow us on



@LowerGwyneddPA



Find our page on Facebook at "Lower Gwynedd Township"
and "Lower Gwynedd Township Police Department"



Left to right: Kathleen Hunsicker; Deanne H. D'Emilio, Gwynedd Mercy University's 6th President; and Representative Kate Harper at the Gwynedd Mercy University Presidential Inauguration Ceremony on April 13, 2018.



On May 22, 2018 Dr. J. Richard Booth presented Thomas Nagle with a proclamation from the Board of Supervisors in recognition of receiving his Eagle Scout Award.



Nominate Citizen of the Year

Do you know someone who has served Lower Gwynedd so well that you think he or she should be Lower Gwynedd's 2018 Citizen of the Year? Last year, Larry Altman, was chosen to receive this honor. A special selection committee will review residents' nominations and name this year's Citizen of the Year.

To make a nomination, write a one-to-two page letter describing how your nominee demonstrates a commitment to improving the quality of life in the Township. Send your nomination by September 14, 2018 to:

Carole B. Culbreth, Lower Gwynedd Township, P. O. Box 625, Spring House, PA 19477
cculbreth@lowergwynedd.org • fax: 215.646.3357

Please remember to include your name and contact information. The winner will be announced at the annual Volunteer Event and will be featured in the next issue of the Lower Gwynedd Report.

Lower Gwynedd Police Benevolent Association

Annual Golf Outing



Monday, October 15, 2018
at Old York Road Country Club



Questions: (215) 646- 5303 ext. 348 or
BRyan@lowergwynedd.org

Old York Road Country Club is located at
801 Tennis Ave. Springhouse, PA 19477

Old York Rd. Country Club requires soft
spikes and collared shirts, no jeans please.



Notes from the Fire Marshal



NORTH PENN VOLUNTEER FIRE COMPANY AND WISSAHICKON FIRE COMPANY



Fire and rescue services are provided in Lower Gwynedd Township by two volunteer fire companies—North Penn Volunteer Fire Company and Wissahickon Fire Company. Both of these companies are 100% volunteer organizations—having no paid staff. They respond to calls in the Township and other surrounding areas. They answered over 350 calls in the Township last year alone.

These fire companies are organized as non-profit corporations under IRS 501c3 guidelines. Each has a board of directors, company officers (president, vice president and so forth) in addition to the operational officers (fire chief, deputy chief(s), and others). They are both long standing organizations—North Penn traces its origins to 1888, Wissahickon was formed in 1891. They are responsible for their budgets, maintenance of their buildings and equipment (except the station at the Township building) and the purchase,

operation and maintenance of their apparatus. Today, for perspective, an engine (pumper) costs approximately \$600,000, new, and an aerial ladder is around \$1.1 million.

So, who are these volunteers, who basically run businesses with budgets above \$500,000 per year, and answer fire and rescue emergency calls at a rate of almost one per day (everyday) in the Township? Each company has a roster of over 60 members who support the activities of their company—some assist with just the business, others are active firefighters, but all are important to the overall operation. They are friends and neighbors who live and/ or work in the area—close enough that they can respond to emergencies quickly. They work for businesses who allow them to leave to answer calls. This is night/ day/ holidays/ mealtime—whenever their help is requested.

Both fire companies start with Junior Firefighters at the age of 16. Juniors, age 16 to 18, may be members of the fire companies and respond to calls, but are limited in their activities by Pennsylvania law to non-hazardous duties—they cannot enter any hazardous environment. But, junior firefighters are of great value as they learn about firefighting from the ground up. By the time they reach 18 years of age, they have a wealth of experience that will help them and benefits the fire companies.

The adult membership of the fire company comes from two primary groups—those who grew up in firefighting families (fathers or grandfathers who were also firefighters) and those who simply saw the need and have volunteered. Each company has a mix of both groups, with various levels of experience, from probationary (new firefighters) to those who have achieved life active status (20 years of more in the company). Each company requires and receives training at the Montgomery County Fire Academy. For a candidate to achieve full firefighter status today requires they complete a nationally certified Firefighter I course—approximately 176 hours in length. Additional courses in vehicle rescue operations are also required. Advancement to higher levels requires additional courses—usually taken at night and on weekends. Each company also has a drill night to further work on skills and maintain teamwork and coordination of efforts.

The volunteer fire service is currently undergoing numerous evaluations to answer two questions—how do you recruit volunteer firefighters and how do you retain them once they've joined? This area, in and around the Township, is fortunate to have individuals, men and women, who have a strong willingness to help their neighbors in time of need. Even so, each company advertises regularly that it is seeking volunteers. Firefighters talk to their friends to see if they are interested. Turnover occurs when jobs change, spouses have to work, and life intervenes. Both companies have several members who have gone to firefighting careers in Philadelphia and Baltimore. Each company does whatever it can to bring in new members, but there is always a need. Notes are added to fundraising letters, events are held to highlight the values associated with being a member. Other possibilities being considered are talking with the University and the schools about some type of internship program to encourage more to be involved, but these are, as yet, new ideas.

Keeping firefighters is another challenge facing the fire service, generally. Nationwide the average length of time a volunteer will serve is 5-7 years. As noted before, life intervenes, and things change, but companies do their best at keeping the members active and interested. Advancement through the ranks is important, company activities (picnics, banquets, trips to sports events) all help keep members involved and contributing. Both companies have had success in retaining members, with many now having years of service that are 3 to 4 times the average length of service.

In closing, if you find this interesting, please stop at one of the fire stations and talk to them. They drill on Monday nights, but are frequently at the stations on Sundays and evenings. They will be happy to show you around and answer questions. They are very proud of what they do for the Township and their neighbors. It's a diverse group, but it's also a family that welcomes those who want to join.

From North Penn Fire Company



On behalf of the fire company, I am proud and excited to share with you a few updates on what we've been up to and what to look forward to this season.

First, our new ladder truck has been placed in service. Many of you have seen the truck driving around the Township as we trained. Remember, this truck is here to help keep our community safe and is as much your truck as it is ours. So feel free to stop in and see the truck!

This past summer was busy for the fire company. Weekly training continued and six members completed their basic fire academy training and two members completed their EMT certifications as of July.

There have been numerous fundraising events and we cannot thank you enough for your continued support. Your help allows us to protect and serve the community to the best of our abilities. We look forward to seeing all of you at our upcoming fall fundraisers and events.

Looking forward, October is "Fire Prevention Month". While fire prevention is a year round activity, the fall is especially important time. Remember to test your smoke detectors and change the batteries. If you need replacement smoke detectors or additional smoke detectors, please contact publicrelations@northpennfire.com and we will be glad to help you. We also encourage getting your heating system inspected prior to use. This can prevent fires or other emergencies.

Finally, we are always looking for new members. You can serve as an active firefighter, EMS provider or in a variety of different support member roles. There is a job for everyone here, even if you do not want to respond to emergencies. Message us online or come out Monday evenings at 7 pm to learn more.

For upcoming events and more information about the fire company, "Like" us on facebook, "@NPVFC". Additional information can also be found on our website, www.NorthPennFire.com

Sincerely,

Dave Quinn, President



Sign Up for News and Alerts on the Website



Township residents can register their email address to be notified when news items or alerts are posted on the website. Just visit the Township website at www.lowergwynedd.org and click the Email Alerts icon at the top of the page to register. Take the time today and register on the website and you can begin receiving alerts.

Don't be a statistic. Call 811 before digging.

45 percent of American homeowners who plan to dig this year said in a recent survey that they would NOT call 811 beforehand, putting themselves and their communities at risk.



Lower Gwynedd Township Police Department

Mock Teen Bedroom

On Thursday April 19, 2018, the Lower Gwynedd Police in conjunction with the Wissahickon High School and the Ambler Kiwanis hosted a Mock Teen Bedroom at the Wissahickon Auditorium.

This was a drop-in event that allowed adult participants to actively learn ways to check and see if their teens were making dangerous choices. Mock Teen Bedroom stages a teenager's room and hidden among the items are up to 100 items indicative of drug use, abuse, or poor lifestyle choices. This was a great way to educate parents/guardians on what to look for to identify problems before a crisis is reached. This was a hands-on experience that we plan to run again in the future. Use this insight to start a conversation with your children so we can intervene before a crisis.



Vehicle Thefts



The Lower Gwynedd Township Police Department and surrounding Townships have experienced an increase of late night vehicle thefts over the past six months. The vehicles were stolen from single family residences with some of them stolen out of the garages. The actor(s) appear to be targeting mostly higher end vehicles. There has also been a dramatic rise in thefts from all kinds of vehicles. Almost all of the vehicles stolen or entered have been left unlocked. We strongly encourage residents to lock up their vehicles and homes. Remove all valuables from your vehicles and if you see anything suspicious please do not hesitate to call 911.

Public Works Department

Trash & Recycle Containers

- Place trash and recycle containers at the curb no later than 6:00 AM on the day of collection, but no earlier than 7:00 PM on the prior evening.
- Please make sure that container lids or loose items adjacent to the containers are secured.
- In the event of a snow storm please place your containers on top of the curb or in your driveway entrance. Containers left in the street are obstacles the plow truck operators must maneuver around which can hinder snow removal operations.



County Roadways

To report a problem on a county owned and maintained roadway please contact the Montgomery County Roads and Bridge Department at (610) 278-6813 during business hours and (610) 275-1222 after hours or in the event of emergency. The roadways listed below are Montgomery County owned and maintained roadways within Lower Gwynedd Township.

Penllyn Pike Sumneytown Pike
Plymouth Road between DeKalb Pike and Gwynedd Valley Train Station.

State Roadways

To report a problem on a state owned and maintained roadways please contact Penn Dot maintenance at (610) 275-2368 or on the web at www.dot.state.pa.us/Internet/web.nsf/ContactUsCCC. The roadways listed below are Penn Dot owned and maintained roadways within Lower Gwynedd Township.

DeKalb Pike	Welsh Road	Norristown Road	Evans Road
Pen Ambler Road	Spring Garden Street	Bethlehem Pike	Tennis Avenue
Route 309			
Gypsy Hill Road between Penllyn Pike and Evans Road			
Plymouth Road between the Gwynedd Valley Train Station and Township Line Road.			

Recycling News

Recycling is Required

Municipal and state regulations require that residents, commercial establishments and non-residential establishments recycle all recyclable materials. Commonly recycled materials include:

- Paper – newspaper, office/copy paper, glossy paper, color paper, cardboard, junk mail, phone books, cereal/cracker boxes
- Plastic – bottles and jugs No. 1-7
- Glass – clear, green and brown containers
- Metal – aluminum, steel, tin, and bimetal cans and containers

Lower Gwynedd Township requires all residential dwellings, commercial establishments, and hospitality establishments (including restaurants and taverns) to recycle the above noted items. The LGT Ordinance also requires recycling containers to be provided at all community events attended by 200 people or more. Recycling is single-stream so separation is not required. If you are interested in learning what other items can be recycled call Waste Management at 1-800-328-1717. LGT also has a leaf and yard waste recycling program where our contracted hauler provides curbside leaf/yard waste collection opportunities throughout the Spring and Fall.



Montgomery County Recycling



Montgomery County also offers opportunities for public waste collection events. Montgomery County will host a household hazardous waste collection event from 9am-3pm on the following dates and in the following locations:

- Saturday, September 22nd
2018- Spring-Ford 9th Grade Center, 400 South Lewis Rd., Royersford, PA
- Sunday, October 21st, 2018
Lower Merion Transfer Station, 1300 N. Woodbine Ave, Penn Valley, PA 19072

For additional information visit www.montgomerycountycycles.org or call the recycling hotline at 610-278-3618.

Fall Leaf/Yard Waste Collection Dates:

Lower Gwynedd Township has a leaf and yard waste recycling program where our contracted hauler, Waste Management, provides curbside leaf/yard waste collection opportunities throughout the Spring and Fall. The current contract provides for eight collections dates, two in the Spring and six in the Fall.

The six scheduled dates for this Fall are the following Saturdays:

- Saturday, October 6th & October 13th, 2018
- Saturday, November 10th & November 17th, 2018
- Saturday, December 8th & December 15th, 2018

All leaf and yard waste must be placed in biodegradable bags and there is a limit of eight bags per pick-up.

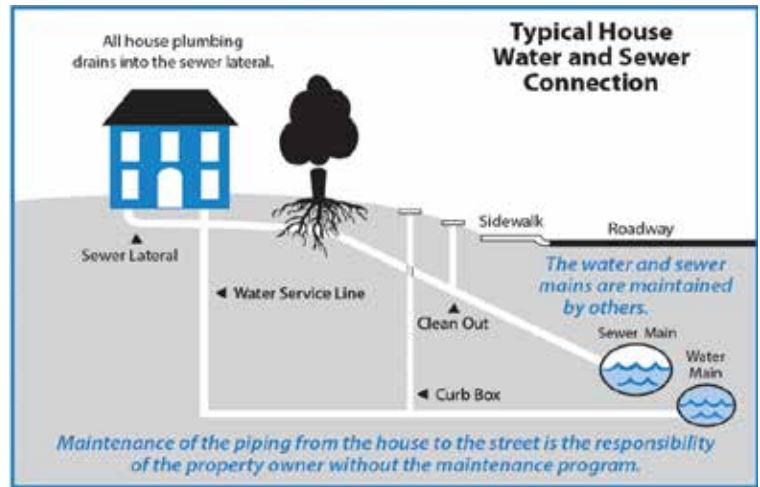


Who pays to restore my broken outdoor water or sewer lines?

Many homeowners have the misconception that their local water or sewer provider is responsible for the water service line and sewer lateral line on their property. Contrary to this belief, the water and sewer lines that service your property are actually yours, and you are responsible for them. Many homeowners who are part of an association have a similar misconception that they are not responsible for their lines, but they very well may be. Unfortunately, many homeowners only learn this when they find themselves having a major problem.

On occasion, water companies will mail letters offering homeowners coverage on their outside lines. The homeowners inevitably react, and call their insurance company or their property manager to find out if this is already covered. Unfortunately, coverage on the external water and sewer lines is rarely – if ever – the case. Typically, insurance pays to restore an insured building or structure for damage caused by an insurable event (fire, water, smoke, etc.) In other words, insurance companies might pay for the damage the broken water line causes to your home, but not the repair of the broken line itself. In a homeowner's association, water and sewer lines are often considered "Limited Common Elements". If a limited common element only services one home, then that homeowner is likely responsible for the repair of the limited common element.

To summarize, the responsibility of the broken pipe lies with the homeowner in most cases. You may be thinking, "OK, I'm responsible...so now what?" There are a couple of options available. If your water or sewer provider offers coverage, you can purchase it through them. Please check with a water or sewer authority to see



if they have an alternative such as BCWSA's Safeguard™ Water & Sewer Maintenance Program. This maintenance program offers a broader protection than the standard coverage offered by a water company. It is also available to Non-BCWSA customers in Bucks County & Montgomery County. For more information, please go to our website www.bcwsa.net or call 215-343-2538 ext.140. It is worth investigating your options to determine the best course of action for you.

Colette Hering, Manager of Marketing and Sales
1275 Almshouse Rd Warrington, PA 18976
h.colette@bcwsa.net



New Pedestrian Walking Bridge Connection over the Willow Run Creek between Gwynedd Hunt and the Carriages of Lower Gwynedd.



VOTE

GENERAL ELECTION
TUESDAY, NOVEMBER 6, 2018

LOWER GWYNEDD
TOWNSHIP

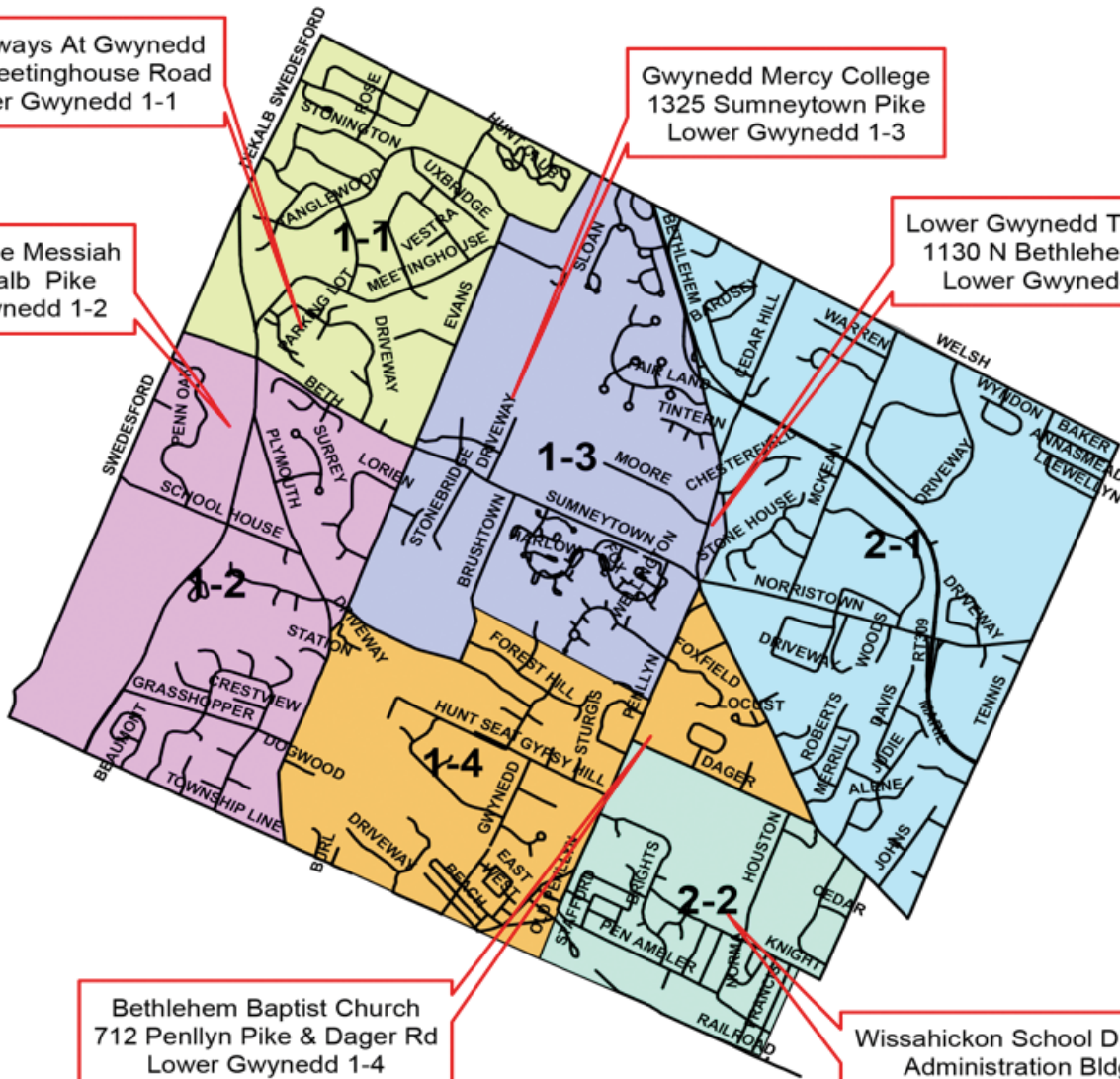
Polling Locations

Foulkeways At Gwynedd
1120 Meetinghouse Road
Lower Gwynedd 1-1

Gwynedd Mercy College
1325 Sumneytown Pike
Lower Gwynedd 1-3

Church of the Messiah
1001 Dekalb Pike
Lower Gwynedd 1-2

Lower Gwynedd Twp Bldg
1130 N Bethlehem Pike
Lower Gwynedd 2-1



SLOW THE FLOW!

Rain Barrels and Water Conservation in the Garden

For many homeowners, gardens provide a source of beauty and contentment. Gardens also provide an opportunity for wise water management practices that positively impact both the quality and quantity of water in the local watershed.

We all live in a watershed. But what exactly is a watershed? A watershed is best defined as an area of land where all the water that is under the land or drains off the land goes to the same place, usually a creek, river, lake, ocean or other body of water.

Perhaps it is easiest to think of a watershed as a gigantic drainage basin or area in which all water, sediments and dissolved materials flow from the land into a common body of water. According to the U.S. EPA, the continental United States has 2110 watersheds.

Why are watersheds important?

Clean water and healthy watersheds are determined by both the quality and the quantity of water within the watershed.

Water quality refers to the chemical, physical and biological characteristics of water with respect to its suitability for a particular purpose; consider water for drinking versus water for washing the car.

Water quantity relates to the amount of impervious surfaces, such as roadways and rooftops, which cannot absorb water. This water runoff results in erosion and flooding. Impervious surfaces channel pollutants directly into streams without being processed by infiltrating the soil during transport. Best management practices suggest that, as a homeowner, it is important to keep the water that falls on your property . . . on your property! Don't let water run off your property.

Here's what you can do to help keep our watersheds healthy:

- reduce storm water runoff and increase local recharge
- reduce fertilizer, pesticide and herbicide use
- clean up pet waste which introduces harmful bacteria into the water supply

Garden practices that incorporate rain barrels minimize storm water runoff by retaining water for later use in the garden.

Rain barrels collect water that would normally flow directly off the roof, through gutter down spouts, and become storm water runoff. Using this runoff for your garden (1) conserves water for plants during dry periods, (2) saves you the time that you would have spent watering garden plants, and (3) provides you with a consistent supply of *free* soft (no chlorine, lime or calcium) water for outdoor use.

Rain barrels come in many shapes and sizes. It is best to select a barrel that is sealed to prevent children or animals from accidentally falling into the barrel.

Rain barrels operate on a gravity-fed system so they usually need to be elevated on top of a single or double layer of cinderblocks or the like. The existing down spout should be interrupted at the correct height of the barrel's water intake opening using a diverter and/or flexible tubing. These are readily

available online from sources such as Spruce Creek Rainsaver as well as in some local hardware stores.

It's critical to connect an overflow hose to the barrel. The water overflow hose should be able to accommodate excess water so that, during a significant rain event, water can exit the barrel without gushing out and onto the building foundation.

Sample Rain Calculation

- Assume ½ inch of rain (0.5 inch) on an 800 square foot section of roof
 $249,200 \text{ divided by } 1,000 = \text{about } 250 \text{ gallons of storm water runoff}$
- Standard value - 1 inch rain on 1,000 sq. ft. roof yields 623 gallons of water.
 $800 \text{ sq. ft.} \times 0.5 \text{ in.} \times 623 = 249,200$
- If you have a 54-gallon barrel, it is very important to have an overflow pipe!

The contents of the barrel can be used for hand watering or may be connected to a soaker hose that is attached to the barrel's spigot. If a soaker hose is connected, leave the barrel's spigot valve open continuously (24/7), this will allow the water to infiltrate the soil at a slow pace.

If the barrel usage rate slows down over time, shingle dust from the roof may have clogged the pores and accumulated in the soaker hose requiring the soaker hose to be flushed out by running water from an outdoor faucet through the soaker hose.

Make sure the barrel has a fine mesh screen to prevent mosquitoes from entering and laying eggs. As an added precaution, a "Dunks" or similar biological pest control (*Bacillus thuringiensis* (Bt) 10%) may be tossed into the barrel to kill mosquito larvae. "Bt" is not harmful to pets, birds or insects.

It is not recommended that water from a rain barrel be used on food crops as roof shingles may contain undesirable materials.

To winterize the barrel simply flip the diverter switch or disconnect the downspout and reconnect the old downspout. Finally, flip the barrel upside down. Accumulated sediment can be flushed out of the barrel by removing the mesh screen during spring installation.

Do-it-yourself rain barrels are popular and there are numerous sources of information on the internet. Check with your local county extension service or search YouTube for the Penn State Three Minute Gardener - keywords "rain barrel." This short video clip provides precise instructions for making your own rain barrel.

Rain barrels are easy to install, maintain and use. Most importantly, they provide an effective way to conserve water and keep our watersheds healthy and our creeks, rivers and lakes free from contamination.

For more information visit:

<https://extension.psu.edu/rain-barrels>

<https://www.pwdraincheck.org/en/stormwater-tools/rain-barrels>

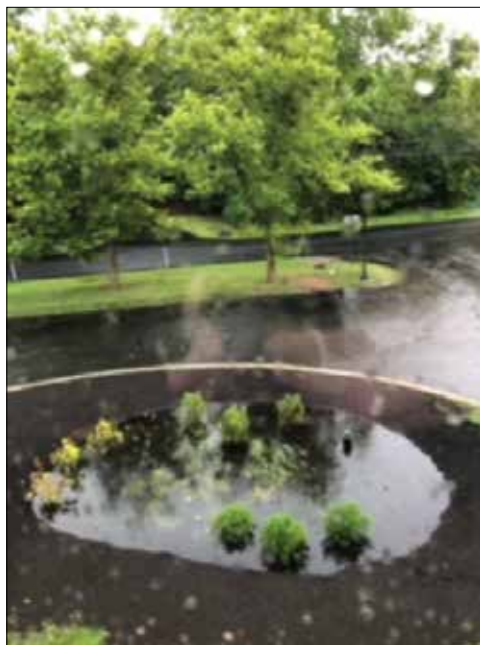
<https://www.epa.gov/soakuptherain/soak-rain-rain-barrels>



STORMWATER MANAGEMENT AND WATERSHED HEALTH

Stormwater runoff is precipitation from rain and snow melt that flows over land and impervious surfaces. This runoff presents numerous challenges for communities. The runoff picks up fertilizers, dirt, pesticides, oil, grease and many other pollutants that flow into our streams and rivers. The untreated runoff harmfully affects water quality needed to support ecosystems and protect drinking water sources. Stormwater runoff may cause flooding and erosion, weed and algae growth and can kill fish and other aquatic life.

Increased land development often results in increased impervious surfaces and a reduction of wooded lots, trees and shrubs. Healthy forests and woodlands absorb rain like sponges and prevent large volumes of runoff into streams and drainage systems. These planted areas serve as natural air cleaners by absorbing carbon dioxide and releasing oxygen. These areas provide important habitats for many animal and bird species and beneficial insects.



Rain Garden during a rain storm.

Stormwater drains and inlets within your neighborhood have an important impact on the water quality of our streams. Why? Storm drains flow directly to nearby rivers and streams, not to wastewater treatment plants. Everything that rain washes off of your roof, yard, and driveway goes to the nearest source, which could be used for swimming, boating, and maybe even drinking. Anything dumped into these drains goes directly into a local stream. Everyone can help (homeowners, business owners, developers and citizens) by never dumping anything into storm drains. Water quality and water quantity define the health of a watershed.

Water quality refers to the chemical, physical and biological characteristics of water with respect to its suitability for a particular use. Water quality is the ability of a water body to support all appropriate

beneficial uses by humans and wildlife (e.g., drinking water and fish habitat). If water supports a beneficial use, water quality is categorized as good or unimpaired. If water does not support a beneficial use, water quality is categorized as poor or impaired.

Water quantity relates to the amount of impervious surfaces, such as roadways and rooftops, which cannot absorb water. Impervious surfaces channel pollutants directly into streams without being processed by infiltrating into the soil during transport. Homeowners should be made aware of the importance of keeping water on their property through infiltration (e.g., seepage beds and rain gardens) rather than allowing runoff.

Here's what you can do to help keep our watersheds healthy:

- Reduce stormwater runoff and increase local recharge of ground water (e.g., rain barrels and rain gardens)
- Use less fertilizers, pesticides and herbicides
- Clean up pet waste which can introduce harmful bacteria into waterways
- Recycle used car oil and wash your vehicle at a commercial car wash, not on the driveway
- Dispose of household hazardous waste responsibly

Please refer to the following links for additional information:

<https://www.lowergwynedd.org/general-information/stormwater-management.aspx>

<https://www.epa.gov/green-infrastructure>



Naturalizing Existing Stormwater Basin at the Municipal Building.



JOIN
Lower Gwynedd Township
for the
2018 Veterans Day Ceremony
held at Veterans Park on
November 10, 2018



Colonel Gabriel J. Zinni, US Army speaks at the Veterans Day Ceremony held on November 11, 2017 at Veterans Park.

SAVE YOUR BATTERIES!

And bring them to the township building for recycling! The Lower Gwynedd Environmental Advisory Council has installed a battery receptacle in the breezeway and invites township residents to dispose of your household batteries there rather than sending them to the landfill.

Household batteries include standard alkaline, nickel cadmium (NiCd), lithium, button batteries and more (no car batteries!). Some small electronics like cell phones are also accepted.

Please see specific instructions (you may need to tape and/or bag certain batteries) and a list of acceptable batteries at the receptacle in the breezeway of the township building.

LOWER GWYNEDD TOWNSHIP ENVIRONMENTAL ADVISORY COUNCIL

Safe Battery Disposal Program

MATERIALS ACCEPTED AT THE TOWNSHIP BUILDING DROP OFF LOCATION

- Alkaline (standard) (tape 9-volt tops)
- Zinc Carbon
- Nickel Cadmium (NiCd)
- Nickel Metal Hydride (NiMH)
- Lithium-ion (bag or tape before dropping)
- Lithium Primary (bag or tape before dropping)
- Mercury Batteries
- Silver Oxide
- Button Cells
- Lead-Acid (non-spillable, no car batteries) (bag or tape before dropping)
- Small Electronics (cell phones, iPods, tablets, power tools, etc.)





2nd Annual PIKE FEST 5K

SATURDAY, SEPTEMBER 15, 2018

8:00 AM START

BETHLEHEM PIKE

SPRINGHOUSE, PA

DESCRIPTION: Accurately measured, beautiful course through Lower Gwynedd starting and ending at **Spring House Tavern**, 1032 N. Bethlehem Pike, Spring House, PA. Families, strollers, dogs on leash and all ages welcomed.

AWARDS: Overall male and female, plus top 3 M/F age group awards: 1st, 2nd, 3rd u15, teens, 20's, 30's, 40's, 50's, 60+.

RACE AMENITIES: 100% Soft Cotton T-Shirt, **Free Raffle**, Professional Timing, **Entertainment & DJ**, Food & Drink provided by **Springhouse Tavern**.

ENTRY FEES: Pre-Registration by Sept. 5 (shirt guaranteed). \$20 ADULTS 15 & Over. \$15 YOUTH 14 & Under

AFTER 9/5 and INCLUDING RACE DAY: (shirts not guaranteed) \$25.00 Adults 15 & Over.
\$20.00 Youth 14 & Under

ENTRY FORM

Name _____
ADDRESS _____ CITY _____
STATE _____ ZIP _____ EMAIL _____
MALE _____ FEMALE _____ DATE OF BIRTH _____ AGE ON RACEDAY _____
PHONE _____ ADULT T-SHIRT SIZE: S _____ M _____ L _____ XL _____
YOUTH T-SHIRT SIZE S _____ M _____ L _____ XL _____

FEE ENCLOSED \$ _____ (Checks payable to Born To Run, Inc.)

Waiver and Release: I, the undersigned (over age 18) intending to be legally bound, do hereby waive and release all rights, claims, demands and/or causes against Born To Run, Inc. and all other race sponsors for any personal injury I might sustain during the race, immediately known to me or hereafter discovered and for any and all other damages or losses which I might incur now or in the future arising from or out of my participation in this race, and on my travel to and from this race. I verify that I am physically fit and have trained sufficiently. Permission is granted to use my photograph and name for all purposes.

Signature _____ Date _____

On-Line registration: www.pretzelcitysports.com (nominal service fee applies)

Packet Pick-Up at Born To Run, 821 N. Bethlehem Pike, Springhouse, 19477 from 10-6 on Friday, Sept. 14

CONTACT: Hilary Goodman | (215)-641-0410 | Hgood85@aol.com

Visit www.lowergwynedd.biz for course maps and directions to the start.

PARKS AND RECREATION

Registration

Pre-Registration is required for all program unless otherwise indicated. Registration are accepted with full payment and completed forms in –person or via mail. No phone registration are accepted. Registration forms can be downloaded from the Township website: lowergwynedd.org forms can also be faxed or emailed. We accept cash, checks (payable to Lower Gwynedd Township), and credit cards. There is a service fee for all credit card transactions. There will be a \$25 service charge on all returned checks.

Refunds: Full refunds will only be issued if the Parks & Recreation Department cancels a program. All discounted amusement and ski tickets sales are final and nonrefundable. All refunds requested by the registration that are granted will be charge a \$5 administration fee.

Cancellation Policy: Programs are subject to cancellation if there is insufficient enrollment, inclement weather or other reasonable causes.

Photo Policy: The Lower Gwynedd Township Parks & Recreation Department may take photos of program participants or park visitors. Please be aware that these photos are for department use only and may appear in future brochures, newsletters, website or flyers.

Discounted Tickets

The Parks & Recreation Department offers a variety of discounted amusement and ski tickets for many destinations year round. Ticket scan be purchased at the Township Building Monday through Friday 8:00 a.m. – 4:00 p.m. Save money and time! Ski lift tickets will be available in late December. For a complete listing of the tickets currently available, visit the Parks & Recreation Department page on the Township website.



Thursday Knitting Group

This informal group meets at the Penllyn Woods Community Building every Thursday afternoon (except for Holiday from 1 p.m. – 3 p.m. If you want to learn how to knit or crochet join in! Need a little help? Have question on a pattern? You will get lots of advice, help and great conversation.



Recycle your Christmas Tree

After the holidays, residents may drop off Christmas trees at Ingersoll Park in the parking lot. The trees are chipped and used in the parks and trails throughout the Township.



AMERICAN RED CROSS BABYSITTING

Saturday, October 13

Location: Penllyn Woods Community Building

Times: 9am – 3pm

Ages: 11-15 years

Fee: \$ 71 per person

This certification course provides teens with the confidence and skills to care for youngsters. Prospective employers hire babysitters who have acquired this official recognition. Upon completion of the course, participants receive an

ARC Certification Card, an interactive CD-ROM, as well as child care concepts. Teens must attend the entire course, pass the evaluations, and show the maturity to properly care for children. Please bring a lunch, pencil and snack. **MUST REGISTER ONE WEEK PRIOR TO THE CLASS START DATE**

Medicare Program

Philadelphia Flower Show

Discount tickets will be available in late January for the 2019 Philadelphia Flower Show ~ Flower Power, March 2-10, 2019 at the Pennsylvania Convention Center.



PARKS AND RECREATION

Trail Dusters

Lower Gwynedd Township has many miles of walking trails. Have you seen a trail or path and aren't really sure about where it leads? Do you like to walk and would like to learn some new paths?

Dates: Tuesday & Thursdays
September 4 – October 4

Time: 6:00 p.m. – 7:00 p.m.

Location: Various trails throughout the Township. Upon registering for the program you will receive a list.

Cost: \$5 per person



Young Rembrandts

Early Elementary Drawing (ages 4-6),
9:00 a.m. – 9:45 a.m.

Drawing (ages 7-14),
10:00 a.m. – 11:00 a.m.

Cartooning (age 8-14),
11:15 a.m. – 12:15 p.m.

Sessions 1:

Saturdays September 8- October 6

Session 2:

Saturdays October 13 – November 10

Session 3:

Saturdays November 17 – December 22 (No Class Nov 24)

Session 4:

Saturdays January 5 – February 2

Location: Penllyn Woods Community Building

Cost: \$70 per participant



Penllyn Woods Community Building

Looking for a great place to have a family gathering, celebrations, parties, baby shower, bridal shower? Reserve the space at the Penllyn Woods Community Building. For more information about the facilities check the township webpage or contact the Parks & Recreation Department at 215-646-5302.

Tech Question & Answer

Presented by the Blue Bell Branch of the Wissahickon Valley Public Library

Date: Wednesday October 24, 2018

Time: 1:00 p.m. – 4:00 p.m.

Location: Lower Gwynedd Township Building, 1130 N Bethlehem Pike, Spring House

Have electronic issues? Library staff and volunteers will be ready to help you resolve them! Devices you can bring; tablet computer (iPad, Droid), e-readers (Kindle, Nook), smart phones (iPhone, Droid). Appointments are required for this program. **Please call the Blue Bell Library at 215-646-320 to setup your 30 minute appointment.**

Disclaimer: The Library's intent is to help people learn the use of their devices. The Library does not assume responsibility for device that are not working property and can't fix devices.



Know Your Medicare Options

During this free seminar you will learn: How Medicare works and what it covers. How Part "D" prescription cards work and how to pick the right one for you. The differences between Medicare supplements and Medicare Advantage plans. Have your questions answered so you can make the right choices when planning for Medicare or Medicare Advantage decisions.

Presented by: Steve Perlman, DelVal Senior Advisors, Independent Medicare Planning Specialist

Date: Tuesday October 2

Time: 6:30 p.m. – 8:00 p.m.

Location: Penllyn Woods Community Building

If you are interested in attending this program you must register with the Parks & Recreation Dept. We do have limited seating for this program.





LOWER GWYNEDD TOWNSHIP
PIKE FEST
SATURDAY SEPTEMBER 15
10:00 A.M. - 4 P.M.

DOWNTOWN SPRINGHOUSE

Join us for the 3rd annual Pike Fest featuring over 100 vendors, our local businesses and restaurants. Exciting additions to last year's festivities include more food trucks, a 5K run down on the Pike and Township Trails.

See page 15 for more information on 5K Run.

Thanks to the Pike Fest Committee for their time and dedication in making this a successful event.

Ambler Yards
Ribbon Cutting

Chair Kathleen Hunsicker assists Matt Sigel with Ambler Yards Ribbon Cutting.



Pennsylvania's School Bus Stopping Law Pennsylvania Vehicle Code

PAVC 3345(a) Meeting or Overtaking School Bus



When a School Bus is stopped on a highway or traffic way with its red lights flashing and side arm extended, a driver following or approaching must stop at least 10 feet from reaching the bus and remain stationary until the lights on the bus are turned off or the children who may have alighted (stepped down or dismounted) have reached a place of safety.

The driver of a vehicle approaching an intersection at which a School Bus is stopped shall stop his vehicle at that intersection until the flashing red signal lights on the School Bus are no longer activated.

If you are convicted of violating Pennsylvania's School Bus Stopping Law, you will receive the following additional Penalties including the above fine and costs:

- FINE \$250.00
- EMS \$10.00
- MCARE/SURCHARGE \$75.00
- COSTS \$39.50
- JCP / ATJ \$10.00
- Total Costs Due \$384.50**
- 60 Day Driver's License Suspension
- Five (5) points on your driving record

Your requirements and responsibilities as a licensed Pennsylvania driver are to obey the School Bus Stopping Law.

- **ONLY** when the bus is on the opposite side of the street with a clearly defined dividing section or physical barrier providing separate roadways do drivers not have to stop on a highway or roadway.
- **YOU MUST STOP** when you meet or are attempting to pass or overtake a stopped School Bus with red signal lights flashing and the stop arm bar is extended.
- **YOU MUST STOP** when you approach an intersection where a School Bus is stopped with red signal lights flashing and the stop arm bar is extended.
- **YOU MUST STOP** on roadways divided with painted lines.
- **YOU MUST STOP** at an intersection whether it is or is not marked with a stop sign. ALL TRAFFIC MUST STOP.
- **YOU MUST STOP** at least ten (10) feet away from the School Bus.

**Proud To Be Your
Hometown University**

Gwynedd Mercy University

Gwynedd Mercy University ranked in the TOP 25% nationwide for 20-year net return on investment (2017 PayScale)

800-342-5462
gmercyyu.edu

BERKSHIRE HATHAWAY | Fox & Roach, REALTORS®
HomeServices

The Joe Burke Team
610-580-1115
Email: Joe.Burke@FoxRoach.com

Colleen Foglia - Joe Burke - Bonnie Heenan
cell: 610-563-0965 cell: 215-806-0393

**Making Realty dreams a REALITY
in Lower Gwynedd for 30 years.**

721 Skippack Pike | Blue Bell, PA 19422

Congratulations!



Sgt. Mike Rogge and Telecommunicator Jack Zabinski receive a Proclamation from the Board of Supervisors for assisting in the successful and ultimately healthy delivery of a newborn baby.



**RACHEL
SUGERMAN**
REALTOR®

(215) 939-6864 CELL
(215) 542-2200 OFFICE
sugermanrachel@gmail.com

www.RachelSugerman.foxroach.com



**BERKSHIRE
HATHAWAY**
HomeServices
PREFERRED

721 Skippack Pike, Suite 100
Blue Bell, PA 19422

*Specializing in
Lower Gwynedd
Township/Wissahickon
School District*

Operated by a subsidiary of NRT LLC.

NELSON & CAMPBELL AUTO TAGS

Quality Customer Service Since 1992

Full-Service Tag Agency

- Instant Registration • Instant Drivers License Renewals
- Instant Vehicle Title Transfers • Leave With Your Documents

www.NelsonAndCampbellAutoTags.com

215-542-9501

909 Bethlehem Pike Penn Dot
Spring House, PA 19477 Authorized On-Line Agent State & Service
Across From Rich's Other Place Deli Complete Notary Services Fees Apply



Kate Harper
State Representative

61st Legislative District
www.kateharper.net
kharper@pahousegop.com
610-277-3230
1098 Skippack Pike
Blue Bell, PA 19422

Follow me on Facebook

North Penn Volunteer Fire Company's New State of the Art Fire Truck



Keller Williams Real Estate



The Bernadine Fanini Team

910 Harvest Drive, Ste 100
Blue Bell, PA 19422-1700
Office: 215-646-2900
Fax: 1-866-776-9589
www.teamfanini.com

Each Office Independently Owned and Operated.

Bernadine Fanini, Realtor®
ABR, AUHS, ASP, CRS, SRES, SRS
Cell: 215-370-9731
Email: bernie@teamfanini.com

Joey Fanini, Realtor®
ABR, SFR, SRS
Cell: 215-920-2125
Email: joey@teamfanini.com

Thank
you

Lower Gwynedd Township gratefully acknowledges the generosity and support of the businesses and individuals who have placed advertisements in our newsletter. This newsletter has been designed and printed at no cost to you, our residents. We encourage you to patronize these businesses as they play a vital role in the economic stability of our community.

HARTH BUILDERS
Design • Build • Remodel

Create Your Happy Space

Make your home your favorite place to be with a renovation by the award-winning, design-build remodeling team at Harth Builders.



1021 N. Bethlehem Pike | Spring House, PA | PA #0249 | HarthBuilders.com | (215) 654-0364

BERKSHIRE HATHAWAY
HomeServices
Fox & Roach, REALTORS

Monica Maben
Realtor

904 Moore Drive
SpringHouse Home Marketing Center
Springhouse, PA 19477
monica.maben@foxroach.com

Main: 215-542-1770
Direct: 215-641-2410
Cell: 215-208-8582

BRAND NEW BUILDING
Same Superb Everything

SERVING SPRING HOUSE SINCE 1995

Arpeggio **B.Y.O.B.**
arpeggiobyob.com

BE SERVED NOT JUST SOLD!

Brett Wetherill Dillon,
 REALTOR®, ABR, ASR, ASP, CNE
 BHHS Fox & Roach—Blue Bell
 Philly 5 Star Agent for 6 years
 215-542-2200 x589 (main office)
 610-212-1362 (mobile)
 brett.dillon@comcast.net (email)



A Lifelong Resident of Lower Gwynedd

Brett is the most amazing realtor...I had the ability & luxury to work with her for a second time this year & my experience was amazing. The one major thing that sets her apart from anyone else, is she's in it to see your happiness & well being & to take care of you, not for herself or for her busi-ness. She truly loves what she does & finds joy in seeing your happiness. Brett will be super honest with you & will work hard to get you anything & everything you want! She's...smart & meticulous but more importantly, is an awesome person inside & out... there's no one else I'd recommend or work with ever again.

Anylise & Tim Brown

**NEGOTIATION * COMMUNICATION
 STAGING * MARKETING**



**GROWLER
 Fills
 Available!**

**Singles and
 6 Packs Now
 Available!**

Largest Cold Case Beer Selection in the Area!

Huge Variety of Specialty, Imported & Domestic Beer
 Available in Cases & Kegs!
 (non-alcoholic beverages, snacks and more...)

267-470-4854

www.amblerbeverage.com

259 E. Butler Ave. • Ambler, PA 19002



Pet friendly campus

Discover the Good Life



foulkeways.org
 215-283-7010

1120 Meetinghouse Rd,
 Gwynedd, PA 19436



GREAT FOOD WITH GREAT ATTITUDE

SPRING HOUSE
 1121 N. BETHLEHEM PIKE
 215-591-3900 | TONYRONIS.COM

\$5.00 OFF

ANY ORDER OF \$39 OR MORE

LIMITED TIME OFFER. CANNOT BE COMBINED WITH ANY OTHER OFFER OR COUPON.
 ORDER SUBTOTAL BEFORE TAX MUST BE \$39 TO RECEIVE DISCOUNT.

#WHOSYOURPIZZAMAN

Lower Gwynedd Township
Spring House, PA 19477
Phone: 215-646-5302
Fax: 215-646-3357
www.lowergwynedd.org

PRSR STD
US POSTAGE
PAID
HARRISBURG PA
PERMIT NO 609



Volume 23, Number 2 • FALL 2018

hometownpress

This Community Newsletter is produced for Lower Gwynedd Township
by Hometown Press • 215.257.1500 • All rights reserved®
To Place An Ad Call Rose Mary At Hometown Press • 215-805-2121



BE HEALTHY. BE STRONG. BELONG.
Ambler Area YMCA

Membership benefits include: **FREE** Group Exercise Classes,
FREE Consultations with a Wellness Coach, **FREE** Child Watch Services,
access to 18 Philadelphia Freedom Valley YMCA locations and much

AMBLER AREA YMCA • 1325 McKean Road, Ambler, PA 19002 • 215-628-9950 • philaymca.org



*Artistry ~ Creativity
~ Personalization ~*



Flowers Silks Gifts

215-628-3550

1013 N Bethlehem Pike
(next to KeyBank)
Lower Gwynedd, PA



valleygreenflowers.com | valleygreenweddings.com



Artisans 3 Gallery

Creatively Curated Jewelry, Clothing & Gifts



**Eclectic Clothing
Hand Made Jewelry
Fantastic Gifts**

Present Ad for:
10% off one full
priced item

903 N. Bethlehem Pike Spring House
215-643-4504
ArtisansThreeGallery.com
instagram @a3gshop