



## Trewellyn Trails

**North Trewellyn Trail**  
 Map: D1 & D2  
 Miles: Connecting trail to the Estates: 0.7, Horseshoe loop: 0.4  
 Larger loop at the entrance: 0.9  
 Surfacing: Stone dust and paved  
 Grade: Moderate  
 GPS(a): N 40° 12.373, W 75° 13.640  
 GPS(b): N 40° 12.167, W 75° 13.779

This trail provides an interesting mix of scenery as you travel through wooded pockets throughout the neighborhood. Between trail and sidewalk, you'll probably take several routes before finding your favorite walk on this multi-path trail. Travel down the connecting section of trail toward the south to cross the creek and head over to Middle Trewellyn or Trewellyn Farms.

**Middle Trewellyn Trail**  
 Map: E2  
 Miles: 1  
 Surfacing: Stone dust and paved  
 Grade: Moderate  
 GPS(c): N 40° 11.697, W 75° 13.503  
 GPS(d): N 40° 11.919, W 75° 13.798

Follow the trail for a serene walk, take the sidewalks to enjoy the neighborhood, or try both. The trail and sidewalks each offer a slight, constant incline from the parking area to the top of the development. If you're still up for more, head north to connect to the North Trewellyn Trail.

**South Trewellyn Trail**  
 Map: F3  
 Miles: 0.7  
 Surfacing: Stone dust and paved  
 Grade: Moderate  
 GPS(e): N 40° 11.607, W 75° 13.532  
 GPS(f): N 40° 11.589, W 75° 13.471

Trewellyn Reserve gives you a taste of the neighborhood and connects you to Spring House Village Shopping Center for a food, coffee, or a shopping break. Once you've mastered this trail, extend your trip north for about two more miles of trail, or cross the street and pick up Centennial Trail.

**Treweryn Farms Trail**  
 Map: D3  
 Miles: Large loop around ponds: 1, Horseshoe loop: 0.3  
 Surfacing: Stone dust and natural  
 Grade: Easy  
 GPS(g): N 40° 11.5068, W 75° 14.2902

This trail wraps around two ponds with beautiful stone bridges at both ends. As you walk the northern end of the trail, you pass a grove of towering pine trees. The southern end of the trail is lined with dozens of rhododendron bushes. Extend your walk to the North Trewellyn or pick up the Gwynedd-Mercy College trail to the south.

## Penllyn Woods & Park

**Penllyn Woods**  
 Map: D7 & E7  
 Size: 77 acres  
 Trail Miles: Each loop: 0.5  
 Trail behind the Community Building: 0.1  
 Surfacing: Stone dust  
 Grade: Easy  
 GPS(a): N 40° 10.522, W 75° 15.124

A jewel in the township, Lower Gwynedd saved this beautiful parcel from development in the 1990s. Now the 77-acre park offers 22+ acres of active recreation space, and is the home of the annual Countrie Picnic. Bring your binoculars as you stroll the trails in the fields and woods—you may spot one of about 30 bird species. Amenities include two little league baseball fields, a 90-foot baseball field, a soccer field, a multipurpose field, two picnic pavilions, and Penllyn Woods Community Building.

**Penllyn Park**  
 Map: E7  
 Size: 4 acres  
 Trail Miles: 0.2  
 Surfacing: Paved  
 Grade: Easy  
 GPS(b): N 40° 10.368, W 75° 14.919

One of the oldest parks in the township, Penllyn Park was renovated in the late 1990s. It is now an active little park with a paved trail connecting it to the larger Penllyn Woods. Amenities include full and half basketball courts, a tennis court, a playground area, a picnic pavilion, and a baseball field.



## Centennial Trail

Map: F2, G2, F3, & G3  
 Miles: Old Bethlehem Pike to Kingsley Court: 0.9  
 Centennial Trail and Spring House Farm loop: 1.2  
 Surfacing: Stone dust and paved  
 Grade: Easy  
 GPS(a): N 40° 11.287, W 75° 13.496  
 GPS(b): N 40° 11.345, W 75° 13.138

This trail features the historic Claytor/Ingersoll House and Barn. The original stone house over the spring is believed to be the origin of the village name, Spring House. Centennial Trail connects the Spring House Village Shopping Center to the Wyndham Woods and Spring House Farm developments. A good trail for light walkers, there are a few benches along the way if you need a short rest.



## Wooded Pond Trail

Map: F1 & G1  
 Miles: Wooded Pond Road to McKean Road: 0.2  
 McKean Road to Red Stone Road: 0.5  
 Surfacing: Stone dust and Natural  
 Grade: Easy to Moderate  
 GPS(a): N 40° 11.866, W 75° 12.735  
 GPS(b): N 40° 11.726, W 75° 12.935

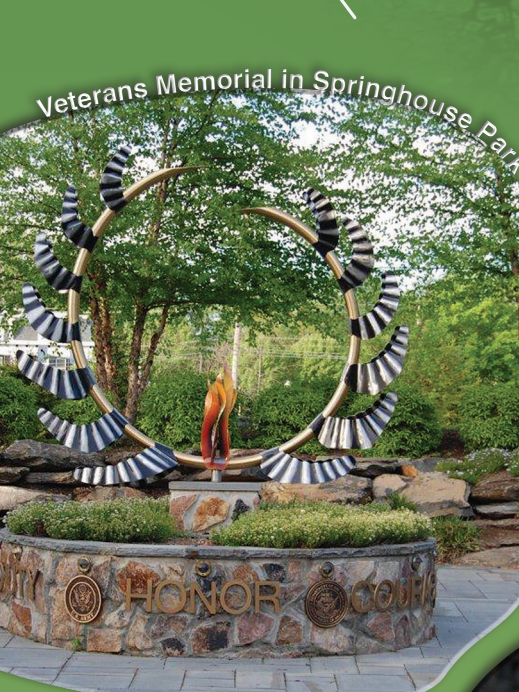
The charming pond and wooden pavilion near the McKean Road and make this short trail worth the trip at all times of the year. This trail connects the cul-de-sac to the front entrance of the Wooded Pond Development. After admiring the pond, take the side trail over to Red Stone Lane, which will connect you to Cedar Hill Trail.



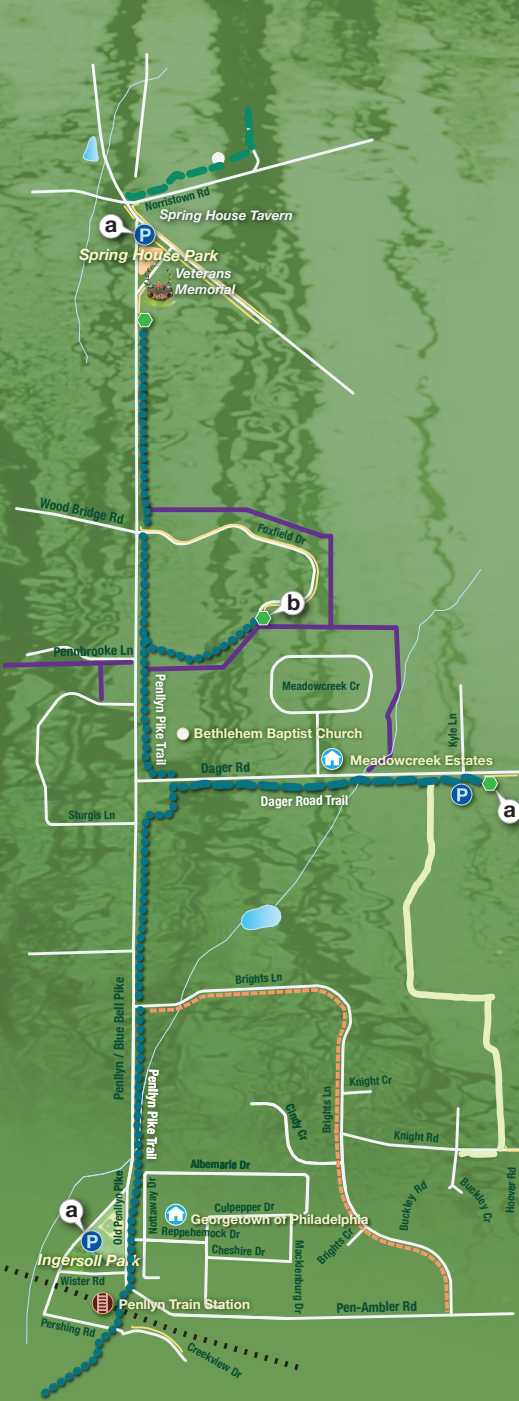
## Cedar Hill Trail

Map: E1 & F1  
 Miles: Short trail off Peterman Lane: 0.2  
 South portion: 0.4  
 North portion: 0.4  
 Surfacing: Stone dust  
 Grade: Easy  
 GPS(a): N 40° 12.041, W 75° 13.117  
 GPS(b): N 40° 11.863, W 75° 13.345

Enjoy a simple walk around the outer edge of the Cedar Hill development with small wooded pockets. Lengthen your walk with a stroll along the sidewalks, a detour on the small loop off Peterman Lane, or cross Cedar Hill Road and pick up Wooded Pond Trail.



## Springhouse Park, Dager Road, Penllyn Pike Trails & Ingersoll Park



## Springhouse Park, Dager Road, Penllyn Pike Trails & Ingersoll Park

**Spring House Park**  
 Map: F4  
 Size: 0.1  
 Trail Miles: 0.1  
 Surfacing: Paved  
 Grade: Easy  
 GPS(b): N 40° 11.064, W 75° 13.705

This specialty park is home to Veterans Memorial Plaza and The Wreath of Honor, which honors all branches of the armed forces. A lunch-break sized trail outlines the park. Plans are underway to connect the trail to the Penllyn Pike Trail on the other end.

**Dager Road Trail**  
 Map: F6, G6, H6  
 Miles: 0.4  
 Surfacing: Stone dust and paved  
 Grade: Easy  
 GPS(a): N 40° 10.432, W 75° 13.737

Go for a morning or evening run on this flat, shaded trail. This established trail offers a long, continuous run with minimal turns. It also connects to a trail and sidewalks around the Wissahickon High School on one end, and the Penllyn Pike Trail on the other end.

**Penllyn Pike Trail**  
 Map: F4, F5, F6, F7  
 Miles: 1.1  
 Surfacing: Stone dust  
 Grade: Easy  
 GPS(b): N 40° 10.735, W 75° 13.813

This newer trail offers an extension for Dager Road devotees, an option for those who prefer straighter paths, and soon more connections. Plans are underway to bring the trail all the way up to Spring House Park, and eventually down to the Green Ribbon Trail.

**Ingersoll Park**  
 Map: F7  
 Size: 5.75 acres  
 GPS(a): N 40° 10.284, W 75° 14.621

Tucked into a triangle, this modestly sized park provides two baseball fields and a picnic area.



## Penn Oak Trails

**North Penn Oak**  
 Map: A4 Miles: 0.7 Surfacing: Paved and stone dust  
 Grade: Severe GPS (a): N 40° 12.181, W 75° 15.888

**Middle Penn Oak**  
 Map: A4 Miles: 0.6 Surfacing: Paved and stone dust  
 Grade: Moderate to severe  
 GPS (b): N 40° 12.020, W 75° 15.613

**South Penn Oak**  
 Map: A5 Miles: 0.7 Surfacing: Paved and stone dust  
 Grade: Moderate to severe  
 GPS (c): N 40° 11.750, W 75° 15.767  
 GPS (d): N 40° 11.799, W 75° 15.780  
 GPS (e): N 40° 11.904, W 75° 15.755

Master Lower Gwynedd's most challenging trails. The Penn Oak Trails offer connecting trails and sidewalks dipping in and out of neighborhoods and wooded areas on a significant incline. If you're up for a good workout, walk the entire perimeter of the trail to cover 1.6 miles.



## John C. Parry Bird Sanctuary

Map: C1  
 Size: 7.25 acres  
 Trail Miles: 0.9  
 Surfacing: Natural  
 Grade: Easy  
 GPS(a): N 40° 12.376, W 75° 13.863

This short trail surrounded by heavy woodlands is ideal for birdwatchers or a short, shaded walk on a hot sunny day. See if you can spot the Northern Mockingbird and Downy Woodpecker. The entrance has a moderate incline but the rest of the terrain is flat.



## Pen Ambler & Oxford Parks

**Oxford Park**  
 Map: B1 Size: 7.8 acres  
 Trail Miles: 1 Surfacing: Paved  
 Grade: Moderate  
 GPS(a): N 40° 12.678, W 75° 14.166

Best known as home of the Summer Concert Series, Oxford Park is a great place for groups. Tucked behind Route 63, this park offers a softball field, basketball court, sand volleyball area, playground, picnic areas, and several game areas for bocce ball, horseshoes, shuffleboard, and marbles.

The trail loops the park, with a wooded section that crosses the trickling waters of Trewellyn Creek.

**Pen Ambler Park**  
 Map: G7 Size: 18 acres  
 Trail Miles: 1 Surfacing: Paved  
 Grade: Moderate GPS(b): N 40° 09.895, W 75° 14.290

Shared with Ambler Borough, Pen Ambler Park offers several amenities as you walk up the gently sloped park. Down by the parking lot you'll find two basketball courts and a playground. Further up you'll see a baseball field and a water fountain with benches. The amphitheatre sets the stage for outdoor theatre performances in the summer. Keep an eye on the ballgames while you travel the trail around the outer perimeter of the park, then continue through a short, shaded woodland area, and pass the naturalized stormwater basin to return to the parking lot.



## Trail Safety

Keep these simple safety tips in mind while enjoying our trails. All of the Lower Gwynedd Township Trails are labeled by a letter and number. The letter makes reference to the trail name and the number section you are located in in the event of an emergency.

- Walk with a friend.
- If you walk alone, tell someone the trails you plan to walk and what time you expect to return.
- Wear bright colors.
- Bring a cell phone.
- Immediately report strangers or anyone that appears to be loitering to the police department.
- In the event of an emergency, call 9-1-1.

## Where to Start?

**Not sure what trail is right for you?**  
 Try these suggestions made to fit your trail style.

**The Endurance Trainer.** Start at the Villages of Trewellyn. Travel all three Trewellyn trails and then cross the street at the traffic light. Pick up Centennial Trail behind the Township Building and weave your way through Spring House Farm and then head back. Depending on which paths you take, you'll have traveled 10-11 miles round-trip.

**The Hiker.** Start at South Penn Oak and walk the entire perimeter of the three Penn Oak Trails. If the grade is too strenuous, you can cut out North Penn Oak on your first few hikes.

**The Stroller.** Try Wooded Pond Trail or Cedar Hill Trail for an easy, relaxing walk you can make as short or as long as you like.

**The Runner.** Follow Dager Road Trail from the high school either left or right on Penllyn Pike Trail. You can also add in the sidewalk and trail around the school for a little longer run.

**The Socialite.** Travel Dager Road Trail in the morning, stop by Oxford Park at lunch, and bring your dog for a walk in the afternoon at Pen Ambler Park.

**The Sun Worshipper.** Stick to the park trails, which tend to be more open with lots of sun, especially Pen Ambler Park and Penllyn Woods.

## Gwynedd Wildlife Preserve & Green Ribbon Trails

**Gwynedd Wildlife Preserve Trail**  
 Map: A6 & A7  
 Size: 0.1  
 Surfacing: Natural  
 Grade: Easy

At the edge of Lower Gwynedd Township, you'll find a haven for bird watchers. Enter the Gwynedd Wildlife Preserve Trail on the Upper Gwynedd Township side of Swedesford Road. The trail runs through public and private property, so be sure to stick to the trail. Pick up a complete map from:

Natural Lands Trust, Gwynedd Wildlife Preserve, www.natlands.org/preserves, or 215-699-6751.

**Green Ribbon Trail**  
 Map: A7, B6, C6, D6, D7, E7, F7, & G7  
 Miles: 21  
 Surfacing: Natural  
 Grade: Easy

This rustic trail is best for pedestrians, not wheeled vehicles. Uneven surfaces, stream crossings, and a variety of birds and foliage make this the perfect trail for nature enthusiasts. The Green Ribbon Trail begins in Upper Gwynedd and travels through Lower Gwynedd and other townships down to Fort Washington State Park. In Lower Gwynedd, you can park your car and pick up the trail at the train station off Plymouth Road or Penllyn Woods. Pick up a complete map of the Green Ribbon Trail from the Wissahickon Valley Watershed Association, www.wva.org, or 215-648-8866.



## Rules & Regulations

1. No person or persons without a special permit shall be allowed in the parklands except between the hours of sunrise and sunset.
2. No vehicle shall be used or parked in any roadway or section of the parklands except in areas designated for such purposes. No person shall operate any motor-powered vehicle within any of the parklands except as required by emergency. Mini-bikes, motor bikes, go-carts, snowmobiles, or any other like vehicle propelled by a gasoline internal combustion engine or propelled by any other kind of fuel are expressly prohibited in park areas.
3. No person shall bring any alcoholic beverage or any illegal drugs to any of the park areas either for his/her own use, or for the use of any other person. Violators are subject to a \$300 fine, per Township ordinance.
4. Pet animals shall be permitted in posted areas and shall be in owner's control and leashed at all times.
5. There shall be no hunting, trapping, guns, bows and arrow, or weapons of any kind permitted on park property.
6. Open fires or grills are prohibited.
7. Park users are urged to immediately report any suspicious activity or vandalism to the Lower Gwynedd Township Police Department at 215-646-5300. In an emergency dial 9-1-1.
8. No person shall dispose of any waste or garbage in the parklands, except in receptacles designated for such purposes.
9. No person shall injure, deface, or destroy any notices, rules, or regulations posted within the park areas, nor shall any person post, within such park lands, any notices or placards other than official signs and notices posted by and under the authority of the park and the Township.
10. Lower Gwynedd Township shall not be held responsible for any injury sustained by any individual during the course of recreational activities taking place on the parklands.

