

- Legend**
- Parcels
 - Index Contour
 - Contour
 - Stream
 - Buildings
 - Impervious Surfaces
 - 100-Year Floodplain
 - Soil Boundaries
- Municipal Boundaries
- Data Sources**
- Aerial - PEMA, 2018
 - Parcels & Roads - Montgomery County Planning Commission, 2022
 - Impervious Surfaces - DVRPC, 2015
 - Floodplain - FEMA, 2016
 - LIDAR Topography - PaMAP, 2008
 - Soils - NCRS-USGS, 2019



Space for 112 Carnival-Style Parking Spaces on Existing Lawn Area



Establish Rain/Pollinator Garden in Existing Depressed Area



Restrooms (2 Unisex)



Pickleball Courts (4)



Potential Nature-Play Area



Replace and Expand Playground Area
Sample Playground Equipment:
2-5 Year Old Area, 5-12 Year Old Area,
and Swings from Landscape Structures
Heritage PIP 7 Playground.

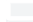







Collaborate with EAC to Develop/Install a Woodland Garden



Paved Gathering/Entry Area with Solar-Charging Picnic Tables

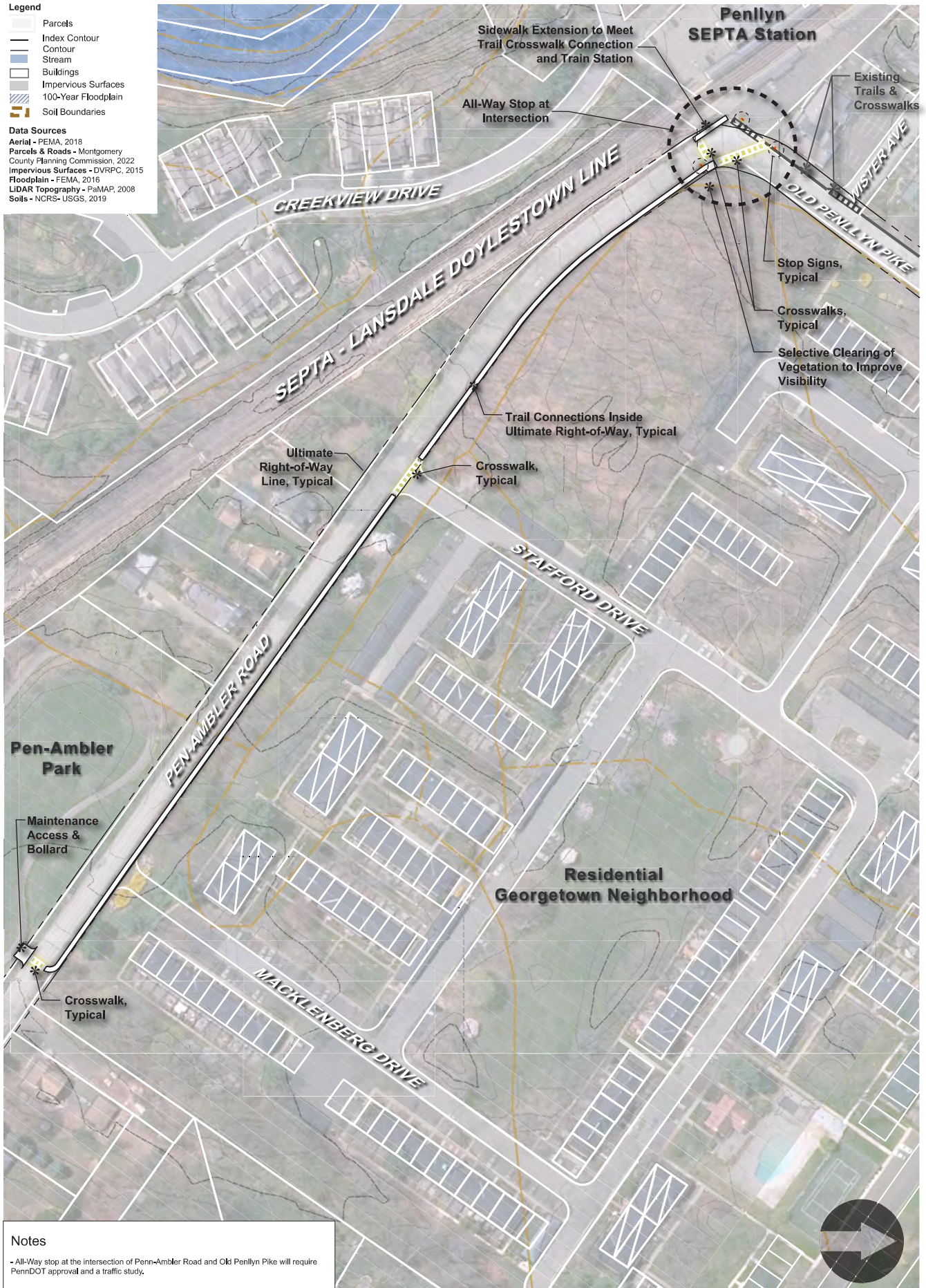


Legend

-  Parcels
-  Index Contour
-  Contour
-  Stream
-  Buildings
-  Impervious Surfaces
-  100-Year Floodplain
-  Soil Boundaries

Data Sources

Aerial - FEMA, 2018
 Parcels & Roads - Montgomery County Planning Commission, 2022
 Impervious Surfaces - DVRPC, 2015
 Floodplain - FEMA, 2016
 LIDAR Topography - PaMAP, 2008
 Soils - NCRS-USGS, 2019



Notes

- All-Way stop at the intersection of Penn-Ambler Road and Old Penlllyn Pike will require PennDOT approval and a traffic study.



Legend

- Parcels
- Index Contour
- Contour
- Stream
- Buildings
- Impervious Surfaces
- 100-Year Floodplain
- Soil Boundaries
- Existing Trails
- Constraints

Opportunities

Data Sources

- Aerial - PEMA, 2018
- Parcels & Roads - Montgomery County Planning Commission, 2022
- Impervious Surfaces - DVRPC, 2015
- Floodplain - FEMA, 2016
- LIDAR Topography - PaMAP, 2008
- Soils - NCRS-USGS, 2019

INGERSOLL PARK - MASTER PLAN