



November 20, 2020

## **Township Encourages Safety First As COVID Cases Increase *State Announces New Mask Guidelines***

Health officials tell us we are entering a difficult and dangerous period as COVID-19 cases increase across Pennsylvania and Montgomery County. As a sign of the spread in the County, the number of cases per 100,000 people has risen to 181.4 for the seven-day period ending November 12 compared to 108.6 for the period ending November 5. Other indicators on the state's [Coronavirus Monitoring Dashboard](#) are also showing increases.

The Township encourages residents to follow guidance from health officials. Please continue to wear masks, social distance, wash your hands frequently and avoid large gatherings. COVID fatigue is real but we can take these steps and need to take these steps, especially with the holidays upon us.

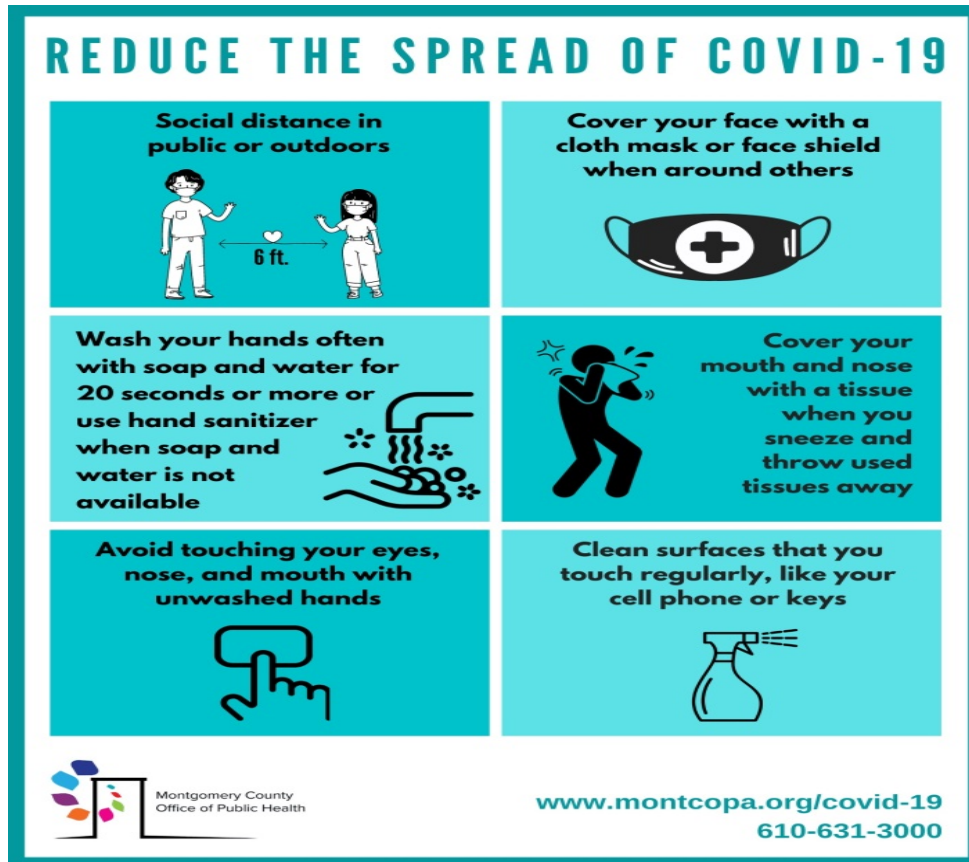
The CDC [this morning issued guidance](#) that recommends against traveling for Thanksgiving. This is a difficult step but please make the correct decision for your family and others.

Because of the increase in COVID cases, Pennsylvania yesterday announced new efforts to mitigate the spread. The steps announced by the state address mask wearing, the health care system, travel and colleges and universities.

[Click here for the announcement of the state's mitigation efforts](#)

The new mask order applies to every indoor facility, including homes, retail establishments, gyms, doctors' offices, public transportation, and anywhere food is prepared, packaged or served. It states:

- Masks are required to be worn indoors and outdoors if you are away from your home.
- When outdoors, a mask must be worn if you are not able to remain physically distant (at least 6 feet away) from someone not in your household the entire time you are outdoors.
- When indoors, masks will now be required even if you are physically distant from members not in your household. This means that even if you are able to be 6 feet apart, you will need to wear a mask while inside if with people other than members of your household.



## Leaf Collection This Saturday

Leaf Collection will take place this **Saturday, November 21, 2020**. Please have your leaves in biodegradable bags at the curb by 6 a.m. Saturday morning. Remember that leaves must be in biodegradable bags.

***Future Leaf Pick-Up Dates*** are scheduled for **Saturday, December 5 and Saturday, December 12, 2020.**

## Proposed 2021 Budget Keeps Taxes and Fees Steady

The Township's proposed 2021 budget keeps real estate taxes at their current rate. The budget also leaves sewer user charges unchanged.

The real estate millage remains 1.223 mils, which means a residence with the median Township assessment of \$429,000 will pay \$524.67 in real estate taxes in 2021.

The budget is available for review at the Township Building between 8:30 a.m. and 4 p.m. by making arrangements with staff. The budget is also [available by clicking here](#).

## **Township Observes Thanksgiving**

The Township Building will be closed Thursday, November 26 and Friday, November 27 for Thanksgiving. Please have a safe and enjoyable Thanksgiving Holiday.

## **Township Staff Available By Appointment**

The Lower Gwynedd Township Building is open but appointments are necessary. Please call 215-646-5302 to schedule a visit. If possible, please conduct business online or by phone for the health and safety of yourself and staff.

## **Coronavirus Resources**

[Lower Gwynedd Township coronavirus page](#)

[Montgomery County coronavirus hub](#)

[Pennsylvania Department of Health](#)

[CDC](#)