



# Lower Gwynedd Report



## MESSAGE FROM THE BOARD OF SUPERVISORS

Oh, what a difference a year makes! This time last year I outlined many of the exciting things happening at two significant redevelopment projects in Lower Gwynedd. I am happy to report that Ambler Yards and Spring House Innovation Park “SHIP” continue on a positive trajectory of transforming these formerly underutilized land parcels into campuses of technology, innovation, modern living and public amenities. Ambler Yards, 253,000 square feet of space across 26.5 acres on Pen-Ambler Road, is now a vibrant campus of restored and repurposed vintage buildings with bright and open workspaces. The campus is nearly 100% leased, with proposals pending on virtually all the remaining vacant space. Ambler Yards is now home to 32 different companies including two engineering firms, the design division of a Fortune 500 company and the corporate headquarters of a U.S. based manufacturer of specialty chemicals. Campus amenities that are also open for enjoyment by Lower Gwynedd residents include a gym, cafe and a co-working site. Construction is well underway for a start-up craft brewery that will feature a tasting room open to the public. Ambler Yards anticipates the return of the beer gardens in the meadow and a new and improved farmers market. Stay tuned for a grand celebration of all of this goodness hosted by Ambler Yards later in the year!

In the meantime, Spring House Innovation Park “SHIP” had a momentous 2018 and has set the groundwork for continued success in 2019. SHIP has leased approximately 110,000 square feet of office and lab space on its 133 acre campus to a variety of accounting, financial services, engineering and pharmaceutical support companies. The first ever and only training institute for biopharmaceutical processing in North America has landed at SHIP by way of Thomas Jefferson University’s Institute for Bioprocessing. This research and training facility is one of only a handful of places throughout the world dedicated to training people to produce potentially life-saving drugs. SHIP has installed a new \$5 million central thermal water plant expected to reduce energy consumption by 40% and air emissions by 60% over the existing plant. Electric car charging stations will be installed around the campus to encourage use of alternative fuel options. Courtyard improvements in the center of the campus are ongoing and include lighting, hardscaped fire pits, landscaping and outdoor seating that will be open to

the public. SHIP is committed to maintaining and upgrading their trails to ease public access to the campus and all it has, and will have, to offer.

Township wide, 2019 welcomes the start of intersection improvements in Spring House, news regarding Gwynedd Mercy University’s newly acquired East Campus, continued low taxes and a pickle ball court at Oxford Park. LGT has been awarded a grant from the National Fitness Campaign to bring world-class outdoor bodyweight circuit training to our community. The fitness court is designed as civic art for a 7 movement full-body workout, digitally supported by a smart phone and apple watch app acting as a coach in your pocket. Check out the video at [www.fitnesscourt.com/2019-campaign](http://www.fitnesscourt.com/2019-campaign).

Finally, a heartfelt thank you from the Board, and, surely, from the entire Township to Kate Harper for her tireless, steady and accomplished career advocating for LGT in Harrisburg as our state representative for 18 years. The Park and Recreation Board is planning the celebration of the 25th anniversary of saving Penllyn Woods, one of Kate’s, and current board member Ed Brandt’s, proudest achievements. The Board welcomes your comments and suggestions on this and any other Township matter at [supervisors@lowergwynedd.org](mailto:supervisors@lowergwynedd.org). We have much to celebrate!



Cheers!  
Kathleen Hunsicker, Chair

## INDEX

Pike Fest Information .....	3
Township Directory .....	4
Staff Highlights .....	4
Citizen of the Year .....	5
Government Award .....	5
Lower Gwynedd Police Department.....	6
Public Works Department.....	6
DEP Growing Greener Grant - Phase II.....	7
Recycling News. ....	8
Township Paper Shredding and E-Cycling Event.....	8
Spring Leaf/Yard Waste Collection Dates .....	9
Montgomery County Recycling .....	9
Polling Locations .....	10
Notes from the Fire Marshal.....	11
Kiwanis Fireworks & Carnival .....	11
Spotted Lanternfly.....	12
Grilling Safety Tips .....	13
Parks & Recreation .....	14-15
Pike Fest 5K Run .....	16
Medicare Options.....	17
Summer Concert Series.....	18

**1130 N. Bethlehem Pike**  
**P.O. Box 625**  
**Spring House, PA 19477**  
**Phone: 215-646-5302**  
**Fax: 215-646-3357**  
**[www.lowergwynedd.org](http://www.lowergwynedd.org)**



- Pharmacy staff dedicated to your health and wellness

- We accept most medicare Part D Plans

- Courteous service by people who know your name



**215-646-1691**



1121 N. Bethlehem Pike  
Spring House, PA 19477  
[www.villagepharmacyatspringhouse.com](http://www.villagepharmacyatspringhouse.com)



*Family Owned and Operated Since 1992*



**Real Patients. Real Smiles.**  
*We create exceptional smiles every day!*

**STELZER DENTAL**  
AESTHETIC AND GENERAL DENTISTRY

**Your Smile Starts Today!** With our **FREE** Smile Consultation

**Call Today 215-646-5777**

[WWW.STELZERDENTAL.COM](http://WWW.STELZERDENTAL.COM)

1108 N. Bethlehem Pike, Suite 2  
Lower Gwynedd, PA 19002  
(Across from the new Spring House Village Shopping Center)

- ✓ Patient friendly financing
- ✓ Complete care for the entire family
- ✓ Cosmetic Dentistry
- ✓ Dental Implants
- ✓ In-office & At-home Teeth Whitening options

Introducing the 2020 Ford Explorer. Built for the next adventure.



**Bergey's**



[BergeysFord.com](http://BergeysFord.com)

700 N. Bethlehem Pike, Ambler | 215-793-3700



**SPRING HOUSE**  
WINDOW & DOOR

908 North Bethlehem Pike  
Spring House, Pa 19477-0244

**215.283.9000**

- The area's premier dealer for over 30 years
- We have our own factory trained installers
- We offer a lifetime warranty on installation
- Free "no pressure" in-home estimates

**Mention this ad and receive a coupon, worth up to \$500 off your next purchase! Valid until December 31, 2019.**

[www.GoSpringHouse.com](http://www.GoSpringHouse.com)

PA LIC# 6172

MARVIN WINDOWS AND DOORS  
THERMA TRU DOORS  
JELD-WEN WINDOWS & DOORS  
SUNRISE WINDOWS  
The Difference is Clear!

*Shaeff-Myers Funeral Home*

**215-646-0595**



**Family Owned and Operated  
Traditional and Cremation Services**

Richard E Myers, FD ~ Robert E Myers, Supervisor  
145 Tennis Ave ❖ Ambler, PA 19002  
[Shaeff-Myers.com](http://Shaeff-Myers.com)



# PIKE FEST

Lower Gwynedd Township

September 14, 2019

10 am - 4pm

Food Trucks



Classic Car



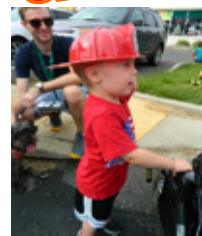
Display



Vendors



Family



Community

Amusements



# TOWNSHIP NOTICES

## LOWER GWYNEDD TOWNSHIP

1130 N. Bethlehem Pike • P. O. Box 625 • Spring House, PA 19477 • [www.lowergwynedd.org](http://www.lowergwynedd.org)  
Administration: Phone: (215) 646-5302 • Fax: (215) 646-3357 • Police: Emergency: 911 Phone: (215) 646-5303

### Board of Supervisors

Kathleen Hunsicker, Chair

Dr. J. Richard Booth, Vice-Chair

Edward J. Brandt • Stephen J. Paccione • Mark G. Grey

**Township Manager:** Craig McAnally  
**Assistant Manager:** Jamie Worman  
**Asst. Sec.:** Carole Culbreth  
**Police Chief:** Paul Kenny  
**Solicitor:** James J. Garrity, Esq. Wisler, Pearlstine  
**Engineer:** Craig Kennard, Gilmore & Associates  
**Public Works Director:** Michael DeStefano  
**E.I.T.; B.P.; Merc. & LST Collection:**  
Berkheimer Associates  
**Zoning Officer:** Kenneth Amey  
**Asst. Zoning Officer:** Craig McAnally  
**Building Inspector/Plan Review:**  
Keystone Municipal Services  
**Recreation Director:** Sandi L. Feight  
**Parks Superintendent:** Mitch Kulp  
**Real Estate Tax Collector:** Betty Lou Yost  
**Fire Marshal:** Al Comly

## LOWER GWYNEDD TOWNSHIP MEETING SCHEDULE

All meetings to be held in the Administrative Office at  
1130 North Bethlehem Pike, Spring House

NOTE: Generally meetings are as follows except when holidays conflict:

Board of Supervisors (7:00 pm) – 2nd & 4th Tuesday

Zoning Hearing Board (7:00 p.m.) – 2nd Thursday

Planning Commission (7:00 p.m.) – 3rd Wednesday

Park & Recreation (6:30 p.m.) – 4th Tuesday

Environmental Advisory Council (7:00 p.m.) – 2nd Wednesday

### Deadline for Submissions:

#### **Zoning Hearing Board**

30 days prior to scheduled meeting

#### **Planning Commission**

30 days prior to scheduled meeting

### TOWNSHIP HOLIDAYS are as follows:

April 19 (Good Friday)

May 27 (Memorial Day)

July 4 (Independence Day Holiday)

September 2 (Labor Day)



@LowerGwyneddPA



Find our page on Facebook at  
“Lower Gwynedd Township”

## Staff Highlights

Lucas Violante (L), a Senior at Wissahickon High School, is a student participating in the Social Lab program. Lucas has been working in the Parks & Recreation Department his Senior year and has dedicated his time to helping with Pike Fest, document archives, special AV projects. After graduation he will be attending Northern Vermont studying Outdoor Education, Mountain Management.

Mitch Kulp (R), was recently promoted to Park Superintendent. Mitch has worked for the Township in the Parks & Recreation Department for the past two years. Mitch is responsible for maintaining the Parks & Trails System located in the Township.



## 2018 CITIZEN OF THE YEAR – ROGER HILLAS

Roger Hillas has been a Lower Gwynedd Township resident for over 75 years. He served in the United States Navy during WWII and the Korean War. Roger was Chairman and CEO of Provident National Bank, PNC Financial Corporation and Meritor Financial Group. He gifted a 10.5 acre preserve along Rt. 202 and Township Line Road known as Timoney Preserve. Roger was a member of the Lower Gwynedd Township Investment Advisory Committee for over 22 years. He is married to Dee and the father of six children.

*Citizen of the Year recipient Roger Hillas poses with his wife, Dee Hillas and son, Sean Hillas at the Lower Gwynedd Township Volunteer Banquet on October 18, 2018.*



## Congratulations on Receiving Government Award from Water Resources Association of the Delaware River Basin (WRA/DRB)

The Water Resources Association of the Delaware River Basin congratulates, Supervisor Mark Grey and the Wissahickon Clean Water Partnership for the excellence that has gained our attention and for which we would like to recognize The Wissahickon Clean Water Partnership. The mission of WRA/DRB is to promote sound water resources management with the Delaware River Basin. To this end the Partnership, made up of thirteen municipalities and four wastewater treatment plant operators in the Wissahickon watershed, has been selected to receive WRA/DRB's prestigious Government Award. We want to promote the actions of the Partnership for developing a TMDL Alternative for nutrients thereby working to improve water quality and management in the Delaware River Basin. Your actions and investment in the Wissahickon Watershed have given you a unique opportunity to demonstrate water management leadership within the Basin. The Partnership will be recognized at the WRA/DRB Recognition Dinner in April.



*(above) Supervisors Stephen Paccione and Dr. J. Richard Booth attending Pike Fest 2018.*

*(left) Refurbished Woodbridge Culvert*

## Lower Gwynedd Township Police Department

### Bike Safety

As the weather warms and the days get longer, residents are venturing outdoors for fresh air and exercise. Cycling is a great way to explore new areas and build healthy habits. But before jumping on that bike and exploring your way across the state, be sure to take the proper safety precautions first:

- Check with your physician before beginning any type of physical regimen, and stop if you experience pain or discomfort.
- Make sure that you have a properly fitting helmet that is neither too tight nor too loose, and one that has not been involved in any impact crash.
- Be sure your tires are inflated to the proper tire pressure as recommended by the manufacturer.
- Ensure all screws are tightened and the seat is adjusted to the proper height based upon your comfort and height.

Be sure to start slowly. The first time riding a bike for the season may not be the right time to mimic the Tour de France. Ease into any physical activity to allow your body to adjust to a new regimen, and be sure to stretch before AND after your ride. If riding on the road, be sure to follow the rules of the road:

- Bicycles are vehicles, and therefore must ride with traffic, on the right side of the road.
- Obey all stop signs, red lights, and traffic direction signals.
- Wear highly visible clothing and ride during daylight hours.
- Understand that the position of the sun may decrease your visibility to drivers.
- Do not wear earbuds or use electronic devices while riding, they interfere with your ability to be aware of your surroundings.
- Carry identification and let someone know your expected route or the time you can be expected home.
- Ride defensively.

So go out there and enjoy the sights to be seen. As always, be careful and put safety first!



## Public Works Department

### 2019 Road Program

For the 2019 road program Lower Gwynedd Township is scheduled to complete roadwork on approximately 2 miles of the 49 miles of roadway the Township is responsible to maintain. The roadwork will consist of asphalt base repairs and new wearing course. The following roadways are scheduled to be repaired and paved this upcoming summer.

- Wissahickon Avenue
- Woodbridge Road
- Fox Pond Drive
- Ederer Lane
- Trewellyn Avenue
- Mill Race Drive
- Hedgerow Drive
- Gwynedd Avenue (Penllyn)
- Joining Brooke Drive
- Hunters Run Drive
- Moore Drive
- Haycroft Drive
- Timberfare Drive



*Public Works Department at Annual Holiday Party*

### Discharging Your Sump Pump

Sump pump discharges may flow naturally across the ground to the nearest storm sewer inlet, or discharged into the yard for percolation into the ground, or directly into the closest stormwater inlet. Please do not discharge your sump pumps directly onto township roadways or sidewalks as this can cause ice to form in the winter months. It is also strictly prohibited and illegal to connect your sump pump to the townships sanitary sewer system. It only takes a few of these illegal connections to overwhelm the system. Taking the following steps will greatly reduce the amount of water that infiltrates your basement.

- Use downspouts to send rainwater away from your foundation.
- Make sure the yard is sloped so rainwater does not flow toward your home.
- Make sure the rain gutters and downspouts around your property are clear.

## DEP GROWING GREENER GRANT – PHASE II

Phase 1 of the project was implemented in June 2018 and included the naturalization of two existing storm water basins on the Township Building property. Phase 2 is coming in the summer of 2019 and will include many of the naturalization techniques that were utilized in Phase 1. The project site for Phase 2 is the Township owned and maintained basins within the Spring House Farm development. The Phase 2 basins are located off of Stone House Road.

Provided below are some facts, example photographs, and a snapshot of the plan to help explain the project.

### “Traditional Stormwater Basin” Facts

The existing basins being retrofitted as part of Phase 2 are considered “Traditional Stormwater Basins”. Below is a list of environmental issues that have been discovered with “Traditional Stormwater Basins” and thus the reason why converting to a “Naturalized Basin” is desired:

- Concrete channels down the middle of the basin heat runoff and quickly transport it through the basin in frequent rain events.
- The concrete channels do not allow for sediments, lawn chemicals, fertilizers, and other pollutants to be filtered out of the stormwater and these pollutants are carried directly into the stream.
- Contribute to erosion of the stream banks which alters and impairs stream habitat.



*Traditional Stormwater Basin*

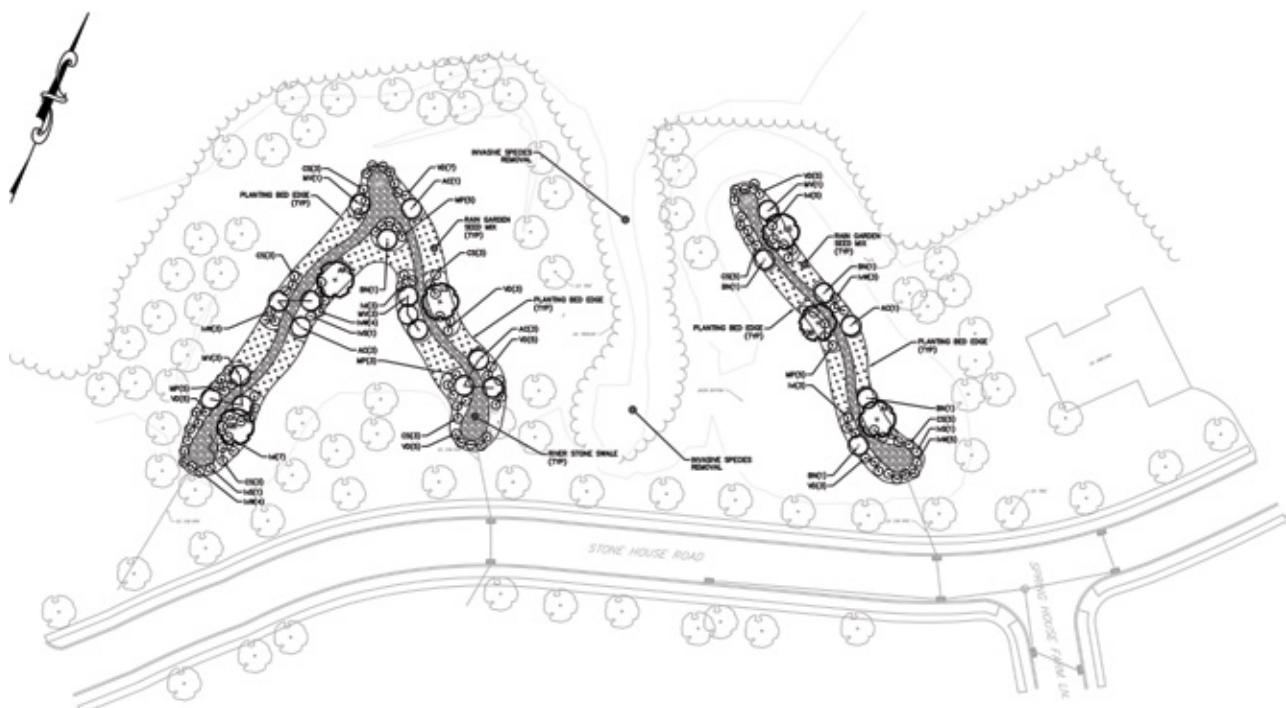
### What is a “Naturalized Basin”?

The project will convert the existing Traditional Basins into Naturalized basins. The primary scope of the project is to remove the existing concrete low flow channels and replace with vegetation lined river rock swales. Below is a list of the benefits of Naturalized Basins:

- Removal of the concrete low flow channel and replacement with a vegetation lined river rock channel will reduce thermal impacts to the stream.
- Root system of the vegetation (trees, shrubs, meadow flowers) will reduce the volume of runoff to the stream by treating stormwater through evapotranspiration.
- Vegetation filters out pollutants such as sediment and fertilizers that would have otherwise migrated into the stream and negatively impacted the ecosystem.
- Maintenance costs are reduced due to only annual mowing and semi-annual weeding of naturalized area.



*Vegetated Low Flow Channel*



## Recycling News

### Recycling is Required

Municipal and state regulations require that residents, commercial establishments and non-residential establishments recycle all recyclable materials. Commonly recycled materials include:

- **Paper:** newspaper, office/copy paper, glossy paper, color paper, cardboard, junk mail, phone books, cereal/cracker boxes
- **Plastic:** bottles and jugs No. 1-7
- **Glass:** clear, green and brown containers
- **Metal:** aluminum, steel, tin, and bimetal cans and containers

**You should check with your hauler for a complete list of acceptable recyclable materials.**

### Contaminated Recycle Materials

Contaminated recycling materials cannot be recycled and usually end up going to a landfill. Here is a list of contaminants that make recycle material non-recyclable:

- 1. Plastic Bags:** Do not place your recycle materials in a plastic bag. Plastic bags cannot be recycled. The recycler will either waste time removing the plastic bag or worst, discard the bag and its contents and send it to a landfill.
- 2. Food Wastes:** Uncleaned containers with leftover food wastes cannot be recycled. Containers contaminated with food wastes will be sent to a landfill. You need to wash food containers and remove all of the food before placing the containers into your recycle bin.
- 3. Bright Colored Paper:** In general, bright colored paper should not be recycled.
- 4. Frozen Food Containers:** The coating on frozen food containers make them non-recyclable.
- 5. Shredded Paper:** Shredded paper should not be placed into your recycle bin.
- 6. Caps and Tops to Bottles, Jars and Containers:** Caps and tops are not recyclable; throw these in the trash, not the recycle bin.

We all want to maximize our recycling efforts, but we need to recycle the correct materials in the correct manner. Otherwise, we mess up the recycling facility and much of our "recycled waste" ends up in a landfill. You should check with your hauler if you have any questions about what materials can be recycled.



### Most Common Contaminants

Keep these common contaminants OUT of your recycling bin.



#### NO Recyclables in Plastic Bags

Empty loose recyclables in bin but leave the plastic bag out.



#### NO Food & liquids

Compost instead! Otherwise, it belongs in the trash.



#### NO Electronics & Small Appliances

Donate if in good condition, or schedule a bulky item pickup, if available. Check [earth911.com](http://earth911.com) for a local drop off site.



#### NO Textiles, Bedding, Rugs & Carpet

Donate these items if they are in good condition. Large quantities may require special disposal.



#### NO Hoses, Holiday Lights, Hangers & Extension Cords

They wrap around equipment and can shut down an entire facility! They all go in the trash.



#### NO Plastic Bags, Film/Sheeting & Flexible Film Packaging

Take plastic bags back to a local grocer to keep bags clean and dry, and prevent them from shutting down recycling facilities. Visit [plasticfilmrecycling.org](http://plasticfilmrecycling.org) to find a drop off location near you.



#### NO Paper Napkins, Plates, Cups & Tissues

Compost if possible, and remember to recycle the cardboard tube.



#### NO Polystyrene Foam

Foam and plastic to-go containers are not recyclable curbside. Find drop off programs for items like foam packing peanuts at [earth911.com](http://earth911.com).



#### NO Tires, Auto Parts & Scrap Metal

(Not in recycling or trash) Can damage equipment & are safety hazards. Contact local scrap recyclers or retail tire stores for recycling options, or check [earth911.com](http://earth911.com) for a drop off center near you.



#### NO Concrete, Wood & Construction Debris

Can damage equipment & are safety hazards. You may be able to schedule a bulky item pickup - otherwise throw it in the trash or order a roll off bin by contacting Waste Management Customer Service.



#### NO Yard Waste & Wood

Compost or put in your yard waste cart, if available. Otherwise, it belongs in the trash.



#### NO Non-Recyclable Plastic

Not everything that is plastic is recyclable! Recycle only food & beverage bottles, jugs and tubs.

For more information on recycling, visit [RecycleOftenRecycleRight.com](http://RecycleOftenRecycleRight.com)

©2017 WM Intellectual Property Holdings, L.L.C. The Recycle Often, Recycle Right.™ recycling education program was developed based upon national best practices.

### Township Paper Shredding and E-Cycling Event:

Lower Gwynedd Township will be providing a paper shredding and e-cycling event to Township residents on Saturday, April 6th, 2019 from 8am-12pm at the municipal building located at 1130 N. Bethlehem Pike. The hired e-cycling vendor will accept anything with a plug or a battery. This service is only available to Township residents; proof of residency required and will be checked upon admittance. Items can only be dropped off during the event time noted above. The Township will not accept items delivered early or late.





## Spring Leaf/Yard Waste Collection Dates:



Lower Gwynedd Township has a leaf and yard waste recycling program where our contracted hauler, Waste Management, provides curbside leaf/yard waste collection opportunities throughout the Spring and Fall. The current contract provides for eight collections dates, two in the Spring and six in the Fall. The two scheduled dates for this **Spring are Saturday, March 23rd, 2019 and Saturday, May 11th, 2019.** All leaf and yard waste must be placed in biodegradable bags and there is a limit of eight bags per pick-up.

## Montgomery County Recycling

Montgomery County also offers opportunities for public waste collection events. Montgomery County will host a household hazardous waste collection event from 9am-3pm on the following dates and in the following locations:

- **Saturday, April 27th, 2019**  
Boyertown Middle School East, 2020 Big Rd., Gilbertsville
- **Saturday, May 4th, 2019**  
Indian Valley Middle School, 130 Maple Ave., Harleysville
- **Saturday, June 15th, 2019**  
Norristown Area High School, 1900 Eagle Dr., Norristown
- **Saturday, June 22nd, 2019**  
Abington Junior H.S., 2056 Susquehanna Rd., Abington



Montgomery County will host a residential tire collection event on the following dates and locations:

- **Saturday, May 11th, 2019**  
Green Lane Road, Morrow Pavilion, Green Lane, PA
- **Saturday, June 8th, 2019**  
Montgomery County Community College, enter at 1313 Morris Road, Blue Bell, PA
- **Saturday, June 29th, 2019**  
Western Montgomery Career & Technology Ctr., 77 Graterford Road, Limerick, PA

For additional information visit [www.MontcoPARecycles.org](http://www.MontcoPARecycles.org) or call the recycling hotline at 610-278-3618.



*Pen Ambler Park in full bloom Spring 2018.*



*Re rendition of Pickle Ball Court to be installed in Oxford Park.*

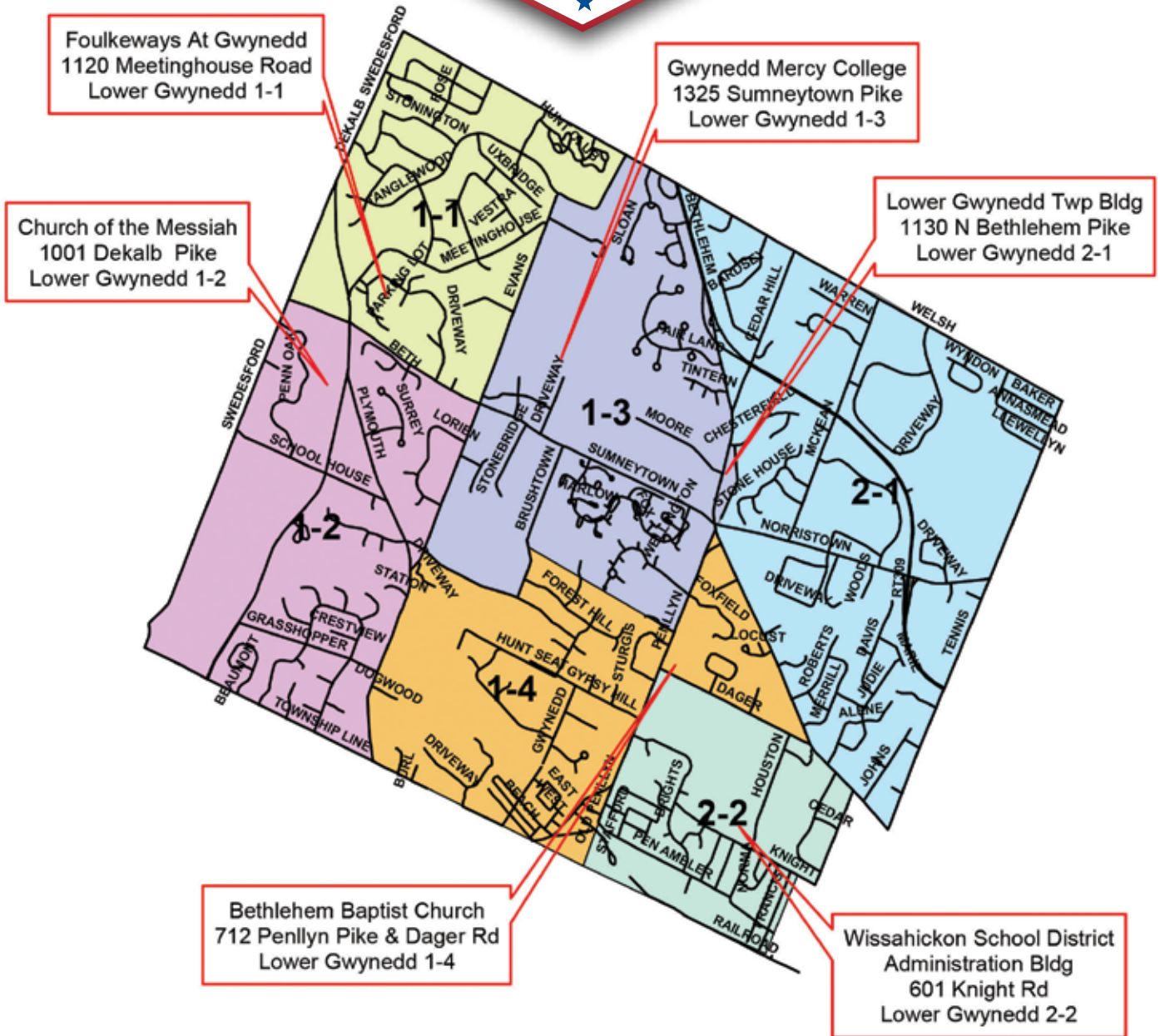
# VOTE

Primary Election:

Tuesday,  
May 21, 2019

LOWER GWYNEDD  
TOWNSHIP

Polling Locations





# Notes from the Fire Marshal



In my Fall 2018 Township newsletter, I reminded our residents that Lower Gwynedd is served by two fire companies—Wissahickon Fire Company and North Penn Volunteer Fire Company—that are 100% staffed by volunteers. I talked about the work they do, more than just responding to calls. I noted that recruitment and retention of volunteer firefighters is an issue faced by all fire companies—even career (meaning paid) fire departments. Since that writing, two reports have been completed—The Montgomery County Fire Study and the SR-6 Report by the Commonwealth of Pennsylvania. Considerable publicity accompanied the release of the SR-6 Report. It is worth doing a computer search to read it. But all said, it really ends up with Funding, Recruitment and Retention. Or even simpler—what do you want, how much does it cost, how much can you pay and who is doing it? The questions are simple, the answers are truly complex.

Here are some very quick numbers:

### Wissahickon Fire Company responded to a total of 612 calls last year—262 in Lower Gwynedd.

- 52% of those calls involved Automatic Fire alarms—active/ false/ carbon monoxide
- 11% of those calls involved Odor of gas (inside or outside) and wires

### North Penn Volunteer Fire Company responded to 332 calls last year—109 in Lower Gwynedd.

- 42% of those calls involved Automatic Alarms
- 10% of those calls were related to odors and wires

So, what can be done to facilitate the delivery of fire and rescue services in Lower Gwynedd, noting that one of the companies is responding in the township at least once a day on average?

1. Proper maintenance of alarm systems. These must be checked out annually by a qualified technician. Make sure kitchen detectors are properly located to prevent unnecessary visits at dinner time.
2. When contractors are working in the area, protect the system to prevent false activation and dirt/dust intrusion.
3. Help the responders find you and help you—have your address easily readable from the street and make sure that driveways are accessible for apparatus. It's all about time when responders are called.
4. As the weather turns warmer and Spring arrives, remember there is no burning of yard waste, garden waste, leaves or trash allowed in the Township.

Some of these items could result in fewer calls, others would make the response timelier. These volunteers are here to help. They are proud to discuss their responsibilities that arise from being a Volunteer Firefighter. Stop by anytime you see the doors open or cars in the lot. When the fire companies present their budgets, the numbers seem enormous to some, but again, this is something that is used every day. Everyone can help—doing the small items like I've noted above or sending a check to their fund drive or signing up to help (not everyone has to be willing to run into burning buildings to help us). If you have questions or comments, I can be reached at the Township Building.

## Sign Up for News and Alerts on the Website



Township residents can register their email address to be notified when news items or alerts are posted on the website. Just visit the Township website at [www.lowergwynedd.org](http://www.lowergwynedd.org) and click the Email Alerts icon at the top of the page to register. Take the time today and register on the website and you can begin receiving alerts.

**KIWANIS FIREWORKS**  
 Save the date: July 5, 2019  
 (Rain date: July 6, 2019)

**KIWANIS CARNIVAL**  
 Tuesday, July 2, 2019 – Saturday, July 6, 2019.

Check the Kiwanis Facebook page for additional information and updates.

# Environmental Advisory Council



## Warning: Spotted Lanternfly Found in Lower Gwynedd Township!

The spotted lanternfly (SLF; *Lycorma delicatula*) is a leafhopper insect native to Southern Asia. Within the past several years this insect has become a problematic invasive pest in North America. First detected in Berks County in September 2014, the SLF is spreading rapidly throughout Pennsylvania and has been found in the entire southeastern Pennsylvania region.

The adult insect feeds primarily on a non-native tree, the tree of heaven (*Ailanthus altissima*). The young nymphs are known to attack a wide range of native hardwood and fruit trees. The SLF feasts on more than 65 different host plants.

The insect has the potential to greatly impact the grape, hops, agricultural and logging industries. Homeowners, nurseries and agricultural industries are experiencing extensive destruction from this invasive pest.

While the **adult**, spotted lanternfly mainly feeds on the Tree of Heaven, it has also been observed on other species, including *Salix* (Weeping Willow).

As a **nymph**, the spotted lanternfly feeds on a wide range of plants and trees:

- Tree of heaven
- Willow
- Maple
- Poplar
- *Prunus spp.* (plums, cherries, peaches, nectarines, apricots, almonds)
- Apple
- Pine
- Grape (vine)

For a full list of host plants, please refer to the web address below:

<https://extension.psu.edu/shopby/spotted-lanternfly>

### Early Detection and Eradication is Vital!

Frequent property inspections and other measures can help halt the spread of this species. It is imperative that inspections occur throughout all life cycles of the insect in order to prevent damage to plants, trees and crops. Winter inspections and egg mass collection is key.

Lower Gwynedd Township is one of thirteen quarantine areas (counties) in Pennsylvania. If you find a Spotted Lanternfly, kill it and immediately report it to the PA Department of Agriculture and Penn State Extension (refer to the web address below), or call 1-888-4BAD-FLY.

### SLF Egg Masses

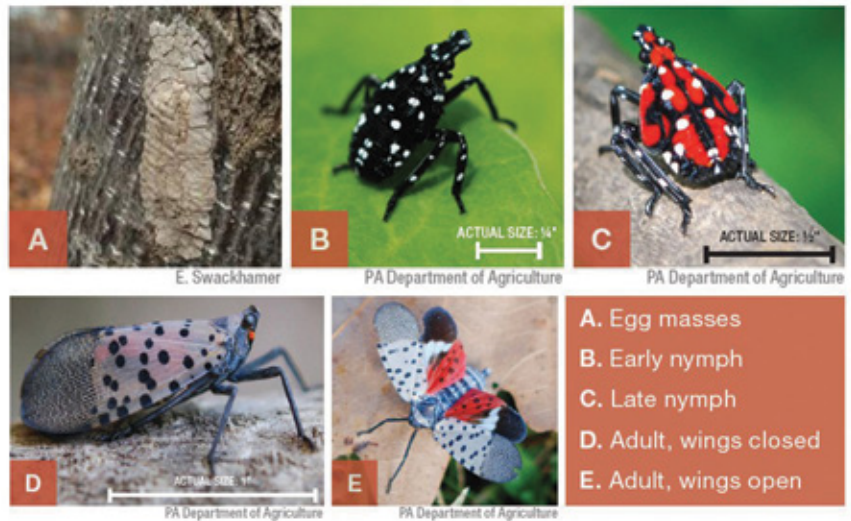
- SLF egg masses can be found on items stored outside, such as vehicles, outdoor furniture, picnic tables, planters, boats, children's play furniture, etc.
- If you have a business, check your product/s before you ship, especially if you are leaving a quarantined area
- Be on the lookout for egg masses "**If you see it, scrape it**" – scrape off egg masses into a plastic bag or container, add rubbing alcohol or hand sanitizer to kill the eggs
  - Multiple egg masses can be placed in each bag or container

<https://extension.psu.edu/spotted-lanternfly>

### Additional Information:

Please visit the Lower Gwynedd Township Environmental Advisory Council webpage for more detailed information and alerts:

<https://www.lowergwynedd.org/township-government/environmental-advisory-council.aspx>



# Grilling Safety

There's nothing like outdoor grilling. It's one of the most popular ways to cook food. But, a grill placed too close to anything that can burn is a fire hazard. They can be very hot, causing burn injuries. Follow these simple tips and you will be on the way to safe grilling.

## SAFETY TIPS

- » Propane and charcoal BBQ grills should only be used outdoors.
- » The grill should be placed well away from the home, deck railings and out from under eaves and overhanging branches.
- » Keep children and pets at least three feet away from the grill area.
- » Keep your grill clean by removing grease or fat buildup from the grills and in trays below the grill.
- » Never leave your grill unattended.
- » Always make sure your gas grill lid is open before lighting it.

## CHARCOAL GRILLS

- » There are several ways to get the charcoal ready to use. Charcoal chimney starters allow you to start the charcoal using newspaper as a fuel.
- » If you use a starter fluid, use only charcoal starter fluid. Never add charcoal fluid or any other flammable liquids to the fire.
- » Keep charcoal fluid out of the reach of children and away from heat sources.
- » There are also electric charcoal starters, which do not use fire. Be sure to use an extension cord for outdoor use.
- » When you are finished grilling, let the coals completely cool before disposing in a metal container.



Your Source for SAFETY Information

NFPA Public Education Division • 1 Batterymarch Park, Quincy, MA 02169

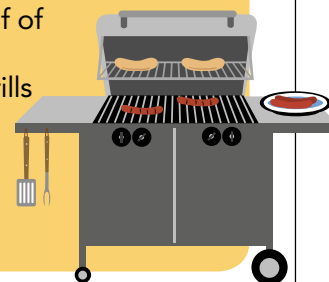
## PROPANE Grills

Check the gas tank hose for leaks before using it for the first time each year. Apply a light soap and water solution to the hose. A propane leak will release bubbles. If your grill has a gas leak, by smell or the soapy bubble test, and there is no flame, turn off both the gas tank and the grill. If the leak stops, get the grill serviced by a professional before using it again. If the leak does not stop, call the fire department. **If you smell gas while cooking, immediately get away from the grill and call the fire department.** Do not move the grill.

If the flame **goes out**, turn the grill and gas off and wait at least **5 minutes** before re-lighting it.

## FACTS

- ! July is the peak month for grill fires.
- ! Roughly half of the injuries involving grills are thermal burns.



# PARKS AND RECREATION

## Registration

Pre-Registration is required for all program unless otherwise indicated. Registration are accepted with full payment and completed forms in-person or via mail. No phone registration are accepted. Registration forms can be downloaded from the Township website: [lowergwynedd.org](http://lowergwynedd.org) forms can also be faxed or emailed. We accept cash, checks (payable to Lower Gwynedd Township), and credit cards. There is a service fee for all credit card transactions. There will be a \$25 service charge on all returned checks.

**Refunds:** Full refunds will only be issued if the Parks & Recreation Department cancels a program. All discounted amusement and ski tickets sales are final and nonrefundable. All refunds requested by the registration that are granted will be charge a \$5 administration fee.

**Cancellation Policy:** Programs are subject to cancellation if there is insufficient enrollment, inclement weather or other reasonable causes.

**Photo Policy:** The Lower Gwynedd Township Parks & Recreation Department may take photos of program participants or park visitors. Please be aware that these photos are for department use only and may appear in future brochures, newsletters, website or flyers.

### Annual Easter Egg Hunt

**Date:** Saturday, March 30  
**Location:** Penllyn Woods  
**Time:** 10 a.m. – 11 a.m.



### Discounted Tickets

The Parks & Recreation Department offers Discounted Ski tickets to area Ski Resorts from December through March. May through September a variety of discounted tickets are available for amusement parks. Tickets can be purchased at the Township Building Monday through Friday 8:00 a.m. – 4:00 p.m. For a complete listing of the tickets available visit the Parks & Recreation page on the Township Website, [www.lowergwynedd.org](http://www.lowergwynedd.org)



### Thursday Knitting Group

This group meets at the Penllyn Woods Community Building every Thursday afternoon (except for Holidays) from 1 p.m. – 3 p.m. If you have questions on a pattern, want to learn how to knit or crochet, please join us.

### Penllyn Woods Community Building

Looking for a great place to have a family gathering, celebrations, parties, baby shower, bridal shower? Reserve the space at the Penllyn Woods Community Building. For more information about the facilities check the township webpage or contact the Parks & Recreation Department at 215-646-5302.



### Trail Clean Up

Please join us as we focus on cleaning up some of the trails in the Township. There is no rain date in the event of inclement weather.

**Date:** Saturday April 27

**Meeting Location:** Lower Gwynedd Township Building ~  
Rear Parking Lot

**Time:** 9 a.m.

### Tech Question & Answer

Smart Phone, iPad/iPhone, Android Tablet, Kindle, Nook, eReader? Got Questions? We've Got Answers!

**Date:** Wednesday March 27

**Time:** 1 p.m. – 3 p.m.

**Location:** Lower Gwynedd Township Building,  
1130 N. Bethlehem Pike

Appointments are required and available at 1:00 or 2:00 pm.

Call Wissahickon Valley Library, Blue Bell Branch, 215-643-1320

You must bring your Amazon (Kindle) or Adobe Digital Editions (Nook) logon information with you. *Disclaimer: The library's intent is to help people learn to use their devices. The library cannot assume responsibility for devices that are not working and can not fix devices.*



### Summer Quest

Wissahickon Valley Public Library readers of all ages will explore space and more this summer as they present "A Universe of Stories" during their Summer Quest program. Activities and programs may include STEM challenges, art projects, local farm visits, and more. Summer Quest is open to anyone between the ages of birth and 17 years old. This program will run from June 17 through August 14. For more information about Summer Quest, please visit [wvpl.org](http://wvpl.org) or email [wvplyouth@gmail.com](mailto:wvplyouth@gmail.com).



### Trail Dusters

Do you know where all the trails are located in the Township? Have you seen a path but not sure where it goes? Join us as we explore a trail a week. Meetings locations vary each week and upon registering for the program you will receive a list of where the group is meeting.

**Dates:** Tuesday and Thursdays April 16 – May 23

**Time:** 6:00 p.m. – 7:00 p.m.

**Location:** Varies each week, participants will receive a list of walking locations upon registering for the program.

**Cost:** \$5 per person

# PARKS AND RECREATION



## Lower Gwynedd Township

# SUMMER CAMP Parks & Recreation

### SUMMER CAMP

2019 Camp to be held at Penllyn Woods

There is limited space per week.

When registering you must indicate what weeks you are registering.

**Ages for the camp:** 6 (or completed kindergarten) – 12 years.

**Time:** 9:00 a.m. – 3:00 p.m.

**Pre Camp:** 8:00 a.m. - 8:30 a.m.

**Post Camp:** 3:00 p.m. – 5:00 p.m.

### Daily Swimming: Wissahickon Middle School

**Ages:** 6 (or completed Kindergarten) – 12 years

**Dates:** June 19 – July 28

**Time:** 9:00 a.m. – 3 p.m.

**Post Camp:** 3:00 p.m. – 5:00 p.m. (additional cost) \$350 per child

**Location:** Wissahickon Middle School

### REGISTRATION CAMP OPTIONS

#### Weekly Rate Option

- \$150 first resident child per week
- \$125 for each additional resident child per week
- \$175 first non-resident child per week
- \$160 for each additional non-resident child per week
  
- \$60 pre-camp, per week, per child (8:00-8:30 a.m.)
- \$120 post camp, per week, per child (3:00-5:00 p.m.)

#### Select the weeks you child will be attending

- June 17-June 21
- June 24-June 28
- July 1-July 5 (no camp July 4)
- July 8-July 12
- July 15-July 19
- July 22-July 26
- July 29-August 2
- August 5-August 9

**Registrations received after May 15, 2019 will be charged a Late Fee of \$50.**



# 3<sup>rd</sup> Annual PIKE FEST 5K

SATURDAY, SEPTEMBER 14, 2019  
8:00 AM START

**BETHLEHEM PIKE                      SPRINGHOUSE, PA**

**DESCRIPTION:** Accurately measured, beautiful course through Lower Gwynedd starting and ending at **Spring House Tavern**, 1032 N. Bethlehem Pike, Spring House, PA. Families, strollers, dogs on leash and all ages welcomed.

**AWARDS:** Overall male and female, plus top 3 M/F age group awards: 1<sup>st</sup>, 2<sup>nd</sup>, 3<sup>rd</sup> u15, teens, 20's, 30's, 40's, 50's, 60+.

**RACE AMENITIES:** 100% Soft Cotton T-Shirt, **Free Raffle**, Professional Timing, **Entertainment & DJ**, Food & Drink provided by **Springhouse Tavern**.

**ENTRY FEES:** Pre-Registration by Sept. 10 (shirt guaranteed).

\$20 ADULTS 15 & Over. \$15 YOUTH 14 & Under

**AFTER 9/10 and INCLUDING RACE DAY:** (shirts not guaranteed) \$25.00 Adults 15 & Over.  
\$20.00 Youth 14 & Under

**ENTRY FORM**

Name \_\_\_\_\_

ADDRESS \_\_\_\_\_ CITY \_\_\_\_\_

STATE \_\_\_\_\_ ZIP \_\_\_\_\_ EMAIL \_\_\_\_\_

MALE \_\_\_\_\_ FEMALE \_\_\_\_\_ DATE OF BIRTH \_\_\_\_\_ AGE ON RACE-

DAY \_\_\_\_\_ PHONE \_\_\_\_\_ **ADULT T-SHIRT SIZE:** S \_\_\_\_\_

M \_\_\_\_\_ L \_\_\_\_\_ XL \_\_\_\_\_ **YOUTH T-SHIRT SIZE** S \_\_\_\_\_ M \_\_\_\_\_ L \_\_\_\_\_ XL \_\_\_\_\_

**FEE ENCLOSED** \$ \_\_\_\_\_ (Checks payable to Born To Run, Inc.)

**Waiver and Release:** I, the undersigned (over age 18) intending to be legally bound, do hereby waive and release all rights, claims, demands and/or causes against Born To Run, Inc. and all other race sponsors for any personal injury I might sustain during the race, immediately known to me or hereafter discovered and for any and all other damages or losses which I might incur now or in the future arising from or out of my participation in this race, and on my travel to and from this race. I verify that I am physically fit and have trained sufficiently. Permission is granted to use my photograph and name for all purposes.

Signature \_\_\_\_\_ Date \_\_\_\_\_

**On-Line registration:** [www.pretzelcitysports.com](http://www.pretzelcitysports.com) (nominal service fee applies)

**Packet Pick-Up** at Born To Run, 821 N. Bethlehem Pike, Springhouse, 19477 from 10-6 on Friday, Sept. 13

**CONTACT:** Hilary Goodman | (215)-641-0410 | Hgood85@aol.com

Visit [www.lowergwynedd.biz](http://www.lowergwynedd.biz) for course maps and directions to the start.



# Know your Medicare Options

Please join us at Lower Gwynedd Township Parks and Recreation  
Penllyn Woods Building

on

**Tuesday May 21<sup>st</sup>**

**&**

**Thursday October 24<sup>th</sup>**  
**from 6:30pm to 8:00pm**

## **During this free educational seminar you will learn:**

- How Medicare works and what it covers
- How Part "D" prescription cards work and how to pick the right one for you
- The differences between Medicare supplements and Medicare Advantage plans

Have your questions answered so you can make the right choice when planning for Medicare or Medicare Advantage decisions.

**Presenter:** Steve Perlman, DelVal Senior Advisors,  
Independent Medicare Planning Specialist

**To register:** Contact the Parks and Recreation Department  
(suggested, not required)

**Presented by DelVal Senior Advisors**



**FREE**

PARKS & RECREATION  
**Summer  
Concert Series**

**Wednesday Nights • 6:30-8:00 pm**  
**Oxford Park • Welsh Road & Cambridge Drive**  
*Bring a Blanket or Lawn Chair*



**Flower Power**  
JULY 3



**Meghan  
Cary**  
JULY 10



**Steve Pullara  
and His Cool Beans Band**  
JULY 17



**The Galena  
Brass Band**  
JULY 24



**ReD Angel Band**  
JULY 31



**Analog Groove**  
AUGUST 7



**Pennise Family  
Band**  
AUGUST 14

**For more information, call Lower Gwynedd Township at 215-646-5302**

*We wish to honor all our county and community heroes:*

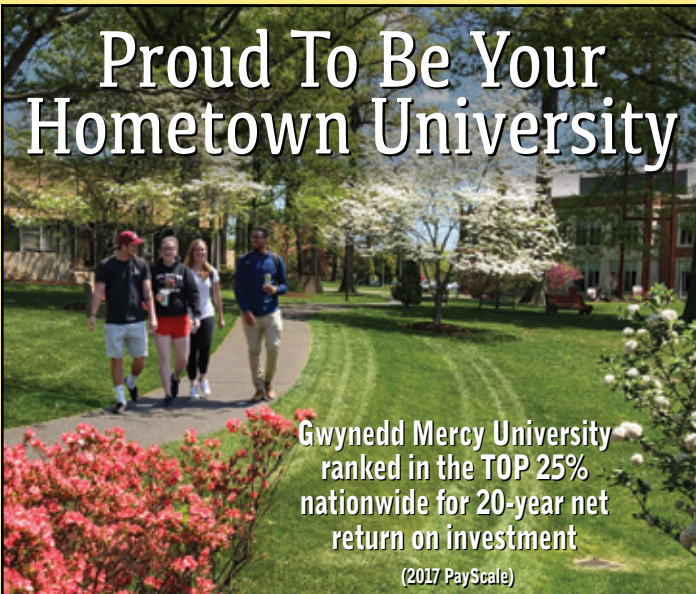
FIRST RESPONDERS ★ MILITARY ★ POLICE ★ FIREMEN  
FAITH LEADERS ★ EDUCATORS ★ PARENTS



*On behalf of the Piszek Family, we wish to thank all our neighbors for their thoughtfulness and compliments.*

*Sincerely,  
Ed Piszek*

## Proud To Be Your Hometown University



Gwynedd Mercy University ranked in the TOP 25% nationwide for 20-year net return on investment (2017 PayScale)



800-342-5462  
gmercyu.edu



BERKSHIRE HATHAWAY | Fox & Roach, REALTORS®  
HomeServices

### The Joe Burke Team

610-580-1115 | Email: Joe.Burke@FoxRoach.com



Colleen Foglia cell: 610-563-0965 - Joe Burke - Bonnie Heenan cell: 215-806-0393

Making Realty dreams a REALITY in Lower Gwynedd for 30 years.

721 Skippack Pike | Blue Bell, PA 19422



*The Spotted Lantern Fly Volunteers' Work Day held on Saturday, February 23, 2019.*



**RACHEL  
SUGERMAN  
REALTOR®**

(215) 939-6864 CELL  
(215) 542-2200 OFFICE  
sugermanrachel@gmail.com



721 Skippack Pike, Suite 100  
Blue Bell, PA 19422

*Specializing in  
Lower Gwynedd,  
Blue Bell, and  
Ambler*

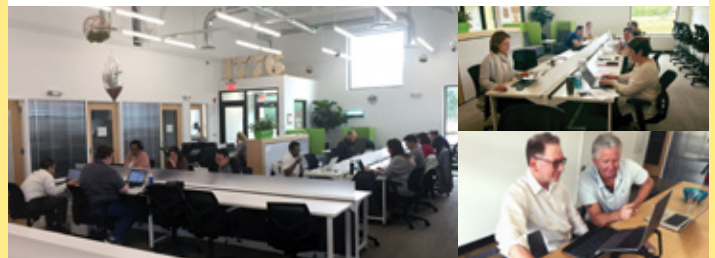
Operated by a subsidiary of NRT LLC.

**1776**

**COWORKING  
AT AMBLER YARDS**

[www.ambleryards.com/1776ay](http://www.ambleryards.com/1776ay)

*Where top entrepreneurs come to  
launch and scale their companies*



Members gain access to a dynamic network and focused programming to provide the knowledge and resources necessary to spur innovation, grow your business and revitalize industries.

- Access To All 1776 Locations
- Private Offices, Dedicated Desks or Shared Space
- Conference Rooms with A/V Connections
- Private Phone Room
- Coffee/Hot Beverage Bar
- Local Beers On Tap
- Outdoor Patio, Fitness Room & Showers

**Contact us for  
a Free Day  
484-542-9028  
[bbergman@ambleryards.com](mailto:bbergman@ambleryards.com)**

# ADVERTISING SALES OPPORTUNITY

*Rewarding Work  
That Fits Your Life!*



- Proven Products
- Flexible Schedule
- Generous Commissions

**Be Your Own Boss. Enjoy Outside Sales Independence.**

Call for Information

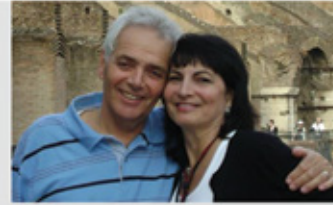
**215-257-1500 x106**



Email your resume to [gregory.cbn@gmail.com](mailto:gregory.cbn@gmail.com)



**Keller Williams Real Estate**



*The Bernadine Fanini Team*

910 Harvest Drive, Ste 100  
Blue Bell, PA 19422-1700  
**Office: 215-646-2900**  
Fax: 1-866-776-9589  
[www.teamfanini.com](http://www.teamfanini.com)

Each Office Independently Owned and Operated.

**Bernadine Fanini, Realtor®**

ABR, AUHS, ASP, CRS, SRES, SRS

**Cell: 215-370-9731**

Email: [bernie@teamfanini.com](mailto:bernie@teamfanini.com)

**Joey Fanini, Realtor®**

ABR, SFR, SRS

**Cell: 215-920-2125**

Email: [joey@teamfanini.com](mailto:joey@teamfanini.com)

**BRAND NEW BUILDING**  
*Same Superb Everything*

SERVING  
SPRING HOUSE  
SINCE 1995

*Arpeggio* **B.Y.O.B.**  
[arpeggiobyob.com](http://arpeggiobyob.com)



**THANK YOU**

Lower Gwynedd Township gratefully acknowledges the generosity and support of the businesses and individuals who have placed advertisements in our newsletter. This newsletter has been designed and printed at no cost to you, our residents. We encourage you to patronize these businesses as they play a vital role in the economic stability of our community.



Swimming • Tennis • Quiet Relaxation • Surprisingly Affordable



The “Alternative” Country Club

PENLLYN, PA / EST. 1897

[www.penllynclub.com](http://www.penllynclub.com)



# MAKE YOUR HOME YOUR FAVORITE PLACE

Make your home your favorite place to be with a renovation by the award-winning, design-build remodeling team at Harth Builders.

PA #0249

1021 N. Bethlehem Pike | Spring House, PA | PA #0249 | HarthBuilders.com | (215) 654-0364

**BERKSHIRE HATHAWAY**  
HomeServices  
**Fox & Roach, REALTORS®**

**Monica Maben**  
Realtor

904 Moore Drive  
SpringHouse Home Marketing Center  
Springhouse, PA 19477

Main: 215-542-1770  
Direct: 215-641-2410  
Cell: 215-208-8582

monica.maben@foxroach.com

**GA**  
GERMANTOWN ACADEMY  
**Summer Camps**

**June 17 - August 9**

Germantown Academy offers children ages 3 to 14 a diverse, engaging day camp experience, competitive sports camps with varsity GA coaches, and specialized camps in the arts, sciences, and technology at the school's beautiful 126-acre campus in Fort Washington.

**www.gacamp.org**

PA018147

**JMTawnings**

215-659-5239  
www.jmtawnings.com

*The Quality, Reliability & Experience You Expect*

**perfecta**  
Retractable Fabric Awnings  
Manufactured Locally

RECOMMENDED BY  
**SKIN CANCER FOUNDATION**

**GROWLER Fills Available!**

# Ambler Beverage Exchange

**Singles and 6 Packs Now Available!**

**Largest Cold Case Beer Selection in the Area!**

Huge Variety of Specialty, Imported & Domestic Beer Available in Cases & Kegs!  
(non-alcoholic beverages, snacks and more...)

**267-470-4854**  
www.amblerbeverage.com  
259 E. Butler Ave. • Ambler, PA 19002




## BE SERVED NOT JUST SOLD!

Brett Wetherill Dillon,  
REALTOR®, ABR, ASR, ASP, CNE  
BHHS Fox & Roach—Blue Bell  
Philly 5 Star Agent for 6 years  
215-542-2200 x589 (main office)  
610-212-1362 (mobile)  
brett.dillon@comcast.net (email)



*A Lifelong Resident of Lower Gwynedd*

*"Brett could not have done a better job than she did in representing my parents in the sale of our family home in Lower Gwynedd. Every step of the way she put their interests first, before the listing, during the move and renovation, throughout the negotiations, she even represented for them at closing.... simply FANTASTIC! I could not recommend anyone more highly than I will you Brett. Great work and thank you!"*

*Daren Lugat*

**NEGOTIATION \* COMMUNICATION  
STAGING \* MARKETING**



BERKSHIRE HATHAWAY HomeServices  
Fox & Roach, REALTORS®

## NELSON & CAMPBELL AUTO TAGS

Quality Customer Service Since 1992

**Full-Service Tag Agency**

- Instant Registration • Instant Drivers License Renewals
- Instant Vehicle Title Transfers • Leave With Your Documents

[www.NelsonAndCampbellAutoTags.com](http://www.NelsonAndCampbellAutoTags.com)

**215-542-9501**

909 Bethlehem Pike Penn Dot  
Spring House, PA 19477 Authorized On-Line Agent State & Service  
Across From Rich's Other Place Deli Complete Notary Services Fees Apply



Pet friendly campus

## Discover the Good Life



foulkeways.org  
215-283-7010  
1120 Meetinghouse Rd,  
Gwynedd, PA 19436



## GREAT FOOD WITH GREAT ATTITUDE




**SPRING HOUSE**  
1121 N. BETHLEHEM PIKE  
215-591-3900 | TONYRONIS.COM

**\$5.00 OFF**  
ANY ORDER OF \$39 OR MORE



LIMITED TIME OFFER. CANNOT BE COMBINED WITH ANY OTHER OFFER OR COUPON. ORDER SUBTOTAL BEFORE TAX MUST BE \$39 TO RECEIVE DISCOUNT.

#WHOSYOURPIZZAMAN



Lower Gwynedd Township  
 Spring House, PA 19477  
 Phone: 215-646-5302  
 Fax: 215-646-3357  
 www.lowergwynedd.org

PRSR STD  
 US POSTAGE  
**PAID**  
 HARRISBURG PA  
 PERMIT NO 609



Volume 24, Number 1 • SPRING 2019

**hometownpress**

This Community Newsletter is produced for Lower Gwynedd Township  
 by Hometown Press • 215.257.1500 • All rights reserved®  
 To Place An Ad Call Rose Mary At Hometown Press • 215-805-2121



**BE HEALTHY. BE STRONG. BELONG.**  
**Ambler Area YMCA**

Membership benefits include: **FREE** Group Exercise Classes,  
**FREE** Consultations with a Wellness Coach, **FREE** Child Watch Services,  
 access to 18 Philadelphia Freedom Valley YMCA locations and much



**AMBLER AREA YMCA** • 1325 McKean Road, Ambler, PA 19002 • 215-628-9950 • philaymca.org



**Artisans 3 Gallery**

Creatively Curated Jewelry, Clothing & Gifts



**Eclectic Clothing  
 Hand Made Jewelry  
 Fantastic Gifts**

Present Ad for:  
**10% off one full  
 priced item**

903 N. Bethlehem Pike Spring House  
 215-643-4504  
 ArtisansThreeGallery.com  
 instagram @a3gshop

*Artistry ~ Creativity  
 ~ Personalization ~*



Flowers

Weddings

Plants

**215-628-3550**

1013 N Bethlehem Pike  
 (next to KeyBank)  
 Lower Gwynedd, PA

*Valleygreen*  
 flowers & gifts

**valleygreenflowers.com | valleygreenweddings.com**